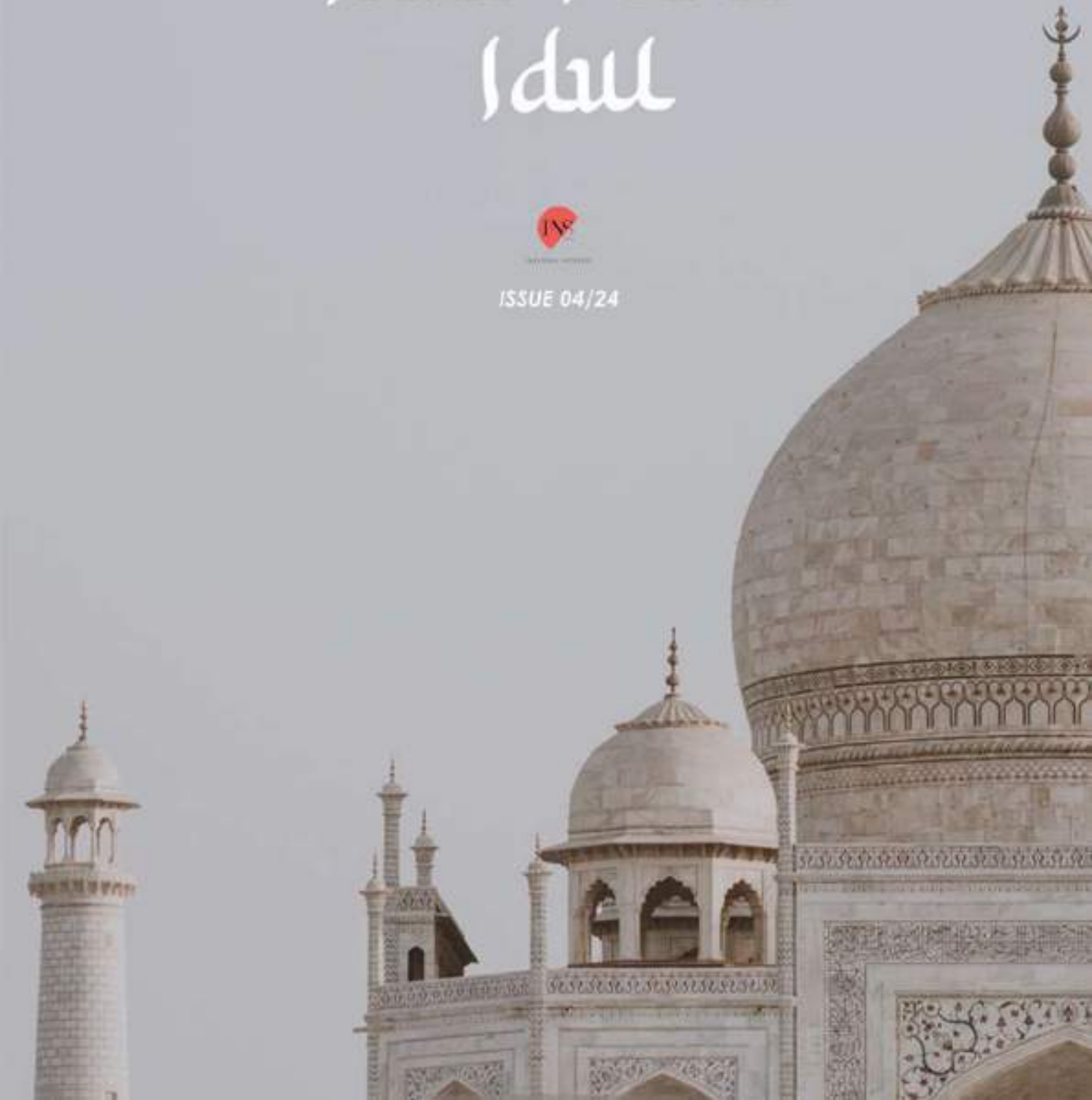


selamat

Hari Raya Idul Fitri Idul



ISSUE 04/24



Contents

Editor's Note

Project Coverage

Redefine Style & Sophistication:

Gunung Impian 2 Storey Cluster Show Unit at Zone 9A1

Ins Concept

Balinese Villa The Sanctuary

TEAM

Insignia Bonding Session: A Ramadan Feast at St. Giles Hotel

Furni

Have A Joyful Raya with IKEA's Furniture Picks

Events & Happenings

Meriah Raya 2024-Vibrant Celebrations of Ramadan and Eid!

Raya Gifts

Corporate Gift Selections

Raya Kitchen

Easy Nutella Cookie Recipe for Beginners

News

Global Landmarks Dim Lights for Earth Hours

Architecture

Sacred Splendor- Zebun Nessa Mosque/ Studio Morphogenesis



Editor's Note

Hari Raya, also known as Eid al-Fitr, is a significant festival celebrated by Muslims worldwide, marking the end of Ramadan, the holy month of fasting.

Yet, at its core, Hari Raya remains a joyous occasion symbolizing spiritual renewal, communal harmony, and the triumph of faith over adversity. May peace and blessings fill the hearts of all Insignians this Raya season, and a heartfelt Selamat Hari Raya Idul Fitri to our esteemed Muslim clients!



INSIGNIA GROUP

Insignia Group



Project Coverage

Project: Gunung Impian 2 Storey Cluster (34'x70') Show Unit at Zone 9A1

Client: Gunung Impian Development

Project Involvement: Design & Build

Design Inspiration: Modern Contemporary Luxury

Insignia Interior has just recently unveiled a stunning testament to modern contemporary luxurious living with the completion of a 2 storey cluster show unit at Taman Impian Emas Zone 9A1.

Associated with a high standard of living that is sophisticated yet stylish, the design takes inspiration from modernism and the luxurious contemporary concept, exemplifies a fuss-free design approach to life.

From its inception, the project aimed to encapsulate the essence of the design concept while infusing elements of timeless elegance. Drawing inspiration from modernism principles and avant-garde aesthetics, our team meticulously curated every aspect of the show house to create a harmonious fusion of form and function.

One of the defining features of the show house is its seamless integration of the material used and the color palette. We instill a series of metallic colors such as rose gold, steel and platinum as the best color to exude the luxurious vibes. Moreover, using the high-quality materials such as natural stones, hardwood, metals and exotic textiles that help to achieve the desired look and feel of luxury.



Foyer

Adorned with rich, natural woods that exude warmth and character, this space welcomes guests with an air of understated luxury. The intricate patterns and tones of the wood create a harmonious backdrop, while soft ambient lighting casts a gentle glow, highlighting the intricate details of the space.





Living Room

Bathed in natural light streaming through floor-to-ceiling windows, the space is adorned with sumptuous furnishings upholstered in plush fabrics, inviting you to sink into comfort.

Dining Area

Where modern decadence meets culinary delight.



Dry kitchen

Experience the fusion of style and functionality in our contemporary dry kitchen. Sleek lines, contemporary design, and top-of-the-line storage converged in this lovely corner.





Parents Room

With thoughtfully selected furnishings and cozy accents, this combination definitely creates a tranquil retreat for the parents.



Master Bedroom

Experience unparalleled comfort and sophistication in our luxurious contemporary bedrooms. Every detail is meticulously crafted to elevate your sanctuary to new heights of elegance and relaxation.

Family Area



Bedroom



INS CONCEPT

Balinese Villa The Sanctuary

Designed by Insignia Interior, our Balinese Villa concept embraces natural materials, featuring a palette of woods, stone, and rattan to evoke warmth while maintaining a luxurious aesthetic. This sanctuary is meticulously designed for rejuvenation and for an exceptionally tranquil sanctuary.

Additionally, we have integrated the essence of the Balinese Villa concept with elements from diverse cultures in this design, culminating in an eclectic living space that celebrates harmony and diversity.



MOOD BOARD @ FOYER



foyer console



resort concept welcoming entrance design



Greeting you with sophisticated and elegant ways to stimulate your senses, where the lines perfectly aligned grooves in the ceiling provide a sense of textures and in-depth effect.



MOOD BOARD @ LIVING

living furniture ideas



ceiling features



wall features



This space is designed to be a haven of comfort and style, where you can unwind and indulge in moments of tranquility. The color palette is a harmonious blend of soothing neutrals and subtle pops of color, creating a serene and inviting atmosphere.



MOOD BOARD @ DINING



This space is meticulously designed with a soothing color for an atmosphere of comfortable, for a memorable dining experience.



MOOD BOARD @ DRY/ WET KITCHEN

kitchen cabinet design

shelving with granite backsplash



island

laundry work

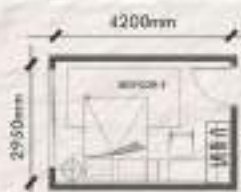
Storage is seamlessly integrated into the kitchen design, with intricately crafted sideboards or display cabinets that provide both functionality and aesthetic appeal.



MOOD BOARD @ PARENTS ROOM



tropical balinese style



Balinese artwork and decor adorn the walls, showcasing intricate wood carvings and serene nature paintings. Immerse the elders in a safe and artistic sanctuary.

L-shape dressing table with wardrobe



MOOD BOARD @ BEDROOM



wardrobe design



dressing table

A coral-themed Balinese bedroom is inspired by the vibrant colors and tropical beauty of the ocean, creates a relaxed and tropical atmosphere, perfect for those ocean-lovers!



MOOD BOARD @ BEDROOM

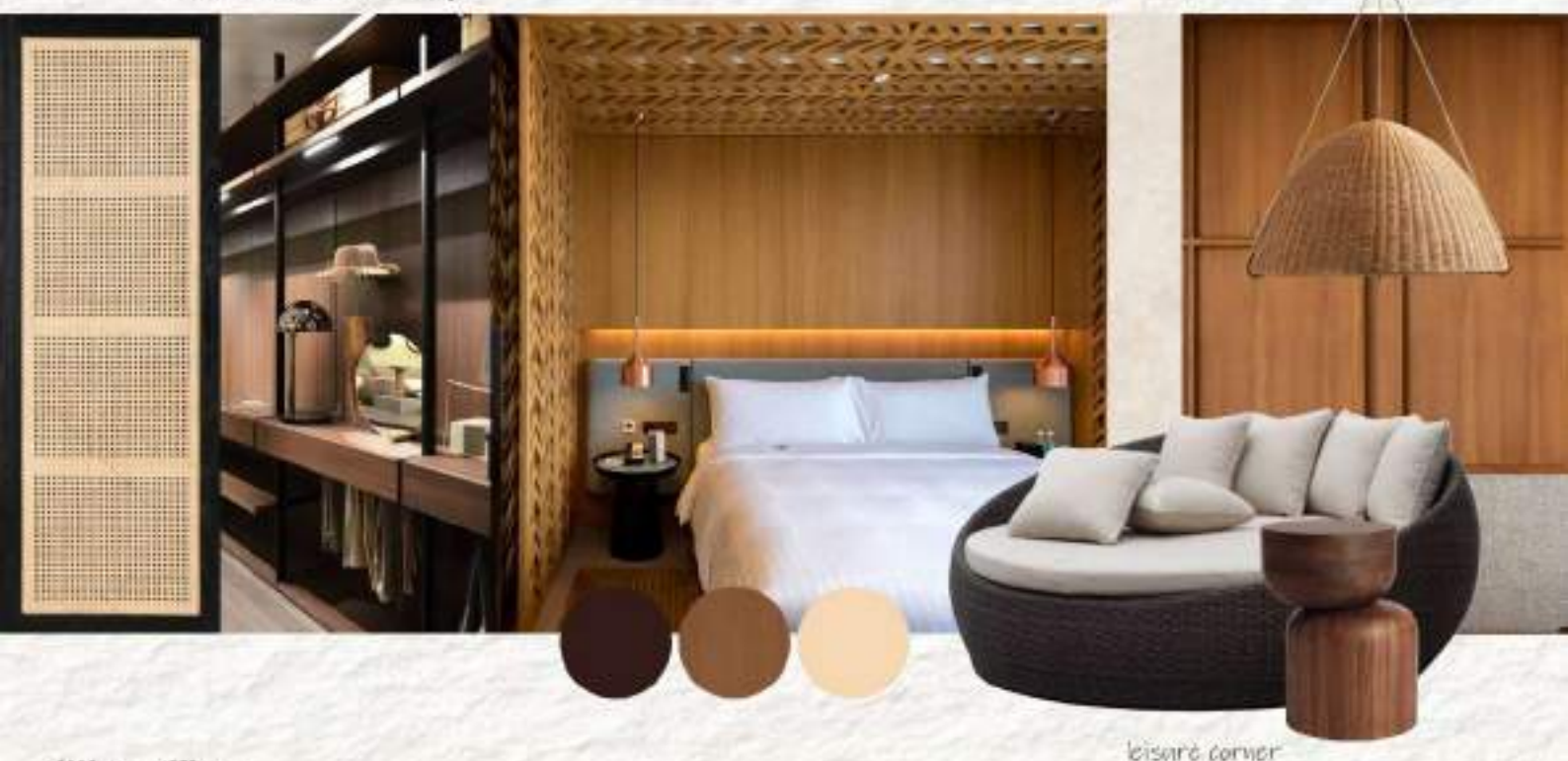


With its peaceful and simplistic aesthetic, a tatami-style Balinese bedroom is the perfect fusion of two cultures, creating a unique and serene atmosphere.



MOOD BOARD @ MASTER BEDROOM

semi-open wardrobe design



With its blend of traditional Balinese decor and modern comforts, a Balinese style bedroom is the perfect retreat for you.



TEAM

Insignia Bonding Session: A Ramadan Feast at *St. Giles Hotel*

In the midst of the joyous Raya celebrations, there's something truly special about coming together with colleagues and loved ones for a feast that transcends mere dining – it's an experience steeped in nostalgia, tradition, and shared memories. This year, our company dinner transported us back in time with its enchanting theme: "Sajian Nostalgia" at St. Gilles Hotel.

"Sajian Nostalgia" promised an array of culinary delights that harked back to the cherished flavors of yesteryears. From classic renditions of Raya favorites like rendang and lemong to traditional kuih-muih that stirred memories of childhood, each dish served as a delightful reminder of our rich cultural heritage.

But the festivities didn't end with the culinary journey alone. Throughout the evening, we were serenaded by melodious singing performances that added an extra layer of enchantment to the ambiance. The soulful tunes of Raya classics filled the air, evoking emotions of joy, nostalgia, and unity.

Moreover, the meticulous decorations further enhanced the immersive experience. Every corner was adorned with Raya-related themes – from intricate ketupat motifs adorning the walls to vibrant pelita lamps casting a warm glow over the proceedings.

This became evident that "Sajian Nostalgia" was more than just a feast – it was a celebration of our shared heritage, values, and sense of community. It reminded us of the importance of cherishing our traditions, preserving our cultural identity, and coming together as one family, united in spirit and purpose.

As we bid farewell to yet another memorable Raya celebration, we carry with us the cherished memories of this enchanting evening – a testament to the timeless allure of nostalgia and the enduring bonds of friendship and camaraderie. Until next year, may the spirit of Raya continue to illuminate our lives with its warmth and joy. Selamat Hari Raya!

ST. GILES



Have A Joyful Raya with **IKEA'S** furniture picks

As the joyous season of Raya approaches, prepare for the festival by transforming your home into the heart of festivities, where laughter, loved ones, and delightful Raya feasts abound! Whether you prefer contemporary settings or the cozy ambiance of traditional kampung gatherings, IKEA presents the ideal opportunity to forge lasting memories together.

Raya, known for its vibrant colors, intricate patterns, and heartfelt gatherings, is a time when homes come alive with the spirit of celebration. With IKEA's diverse range of furniture pieces, you can effortlessly transform your space into a haven of comfort and elegance, ensuring that every moment spent with loved ones is truly special.



Set the mood with the **GOKVÄLLÅ** collection

Transform your space with IKEA's exclusive Raya collection, meticulously designed to capture the essence of Ramadan and Raya, blending cultural beauty with celebratory flair. With these unique pieces, anyone can effortlessly cultivate a welcoming ambiance for cherished guests and loved ones.

GOKVÄLLÅ Serving Stand

Serving stand, three tiers, copper-colour, 41x32x32 cm
RM 169

A festive way to serve crackers, cookies, cheeses and fruit. The generous height makes this 3-tier stand a natural centerpiece on your set table. Place the stand on a table or carry it around by the handle and serve your guests.



GOKVÄLLÅ Teapot

Height: 11 cm Volume: 0.8 l
RM 119

The teapot is made of feldspar porcelain – a durable and natural material that preserves the tea's taste and keeps it warm for a long time.

Simple yet timeless tableware with a traditional style and soft round shapes with attention to details.

Serve your hot drinks with flair and add an extra touch of festivity to your gatherings. This teapot, adorned with terracotta-colored floral arches, is a delightful addition to the GOKVÄLLÅ collection, which also features coordinating kava cups.



GOKVÄLLÅ Serving Tray

Copper colour round, 35x2cm
RM 69

Serve your guests in style.

The tray features an intricate punched pattern along its raised edge, adding a decorative touch to its design.

Crafted from durable stainless steel, this tray is not only long-lasting but also effortless to clean.

Carrying items on this tray is convenient thanks to its protective edge, which prevents them from slipping off.



GOKVÄLLÅ Plate

Orange 27cm
RM 22

Lightweight, durable and dishwasher-safe make this plate an everyday favourites.

Made of feldspar porcelain, which makes the plate impact resistant and durable.

The timeless and smart design makes the dinnerware meet all your needs at home, regardless of what you eat and drink, and withstand being used 365 days a year.

GOKVÄLLÅ Bowl

Orange 22cm
RM 33

Serve your food with the same love that you put into the cooking! This white serving bowl with terracotta-coloured floral arches perfectly matches other porcelain in the GOKVÄLLÅ collection.



GOKVÄLLÅ Cushion

Cushion, Blue, 30x40 cm
RM 23

Indulge in comfort and style with this decorative cushion adorned with delicate embroidered flowers in white and red against a soothing blue backdrop. Not only is this cushion soft and inviting to hug, but it's also generously sized to offer comfortable support for your back while you enjoy reading or watching TV.



GOKVÄLLÅ Lantern for block candle
Blue, 41x16x16 cm
RM 79

This lantern looks like a tiny house and spreads a soft glow through the punched pattern when you light a block candle – making your home feel warm, welcoming and ready for all the festivities.



GOKVÄLLÅ ENRUM
Lantern for tealight, 22cm
RM 25

Suitable for both indoor and outdoor use.
Perfect for hanging at festive occasions
to set that extra party mood.

Events & Happenings

Meriah Raya 2024

Vibrant Celebrations of Ramadan and Eid

The Exchange TRX- Magnificence of Raya (until 21st April 2024)

Enriched with a batik theme, the campaign represents a visual and experiential spectacle inspired by the traditional Malaysian fabric that transforms the mall into a showcase of the local Malay community's culture, tradition and art.

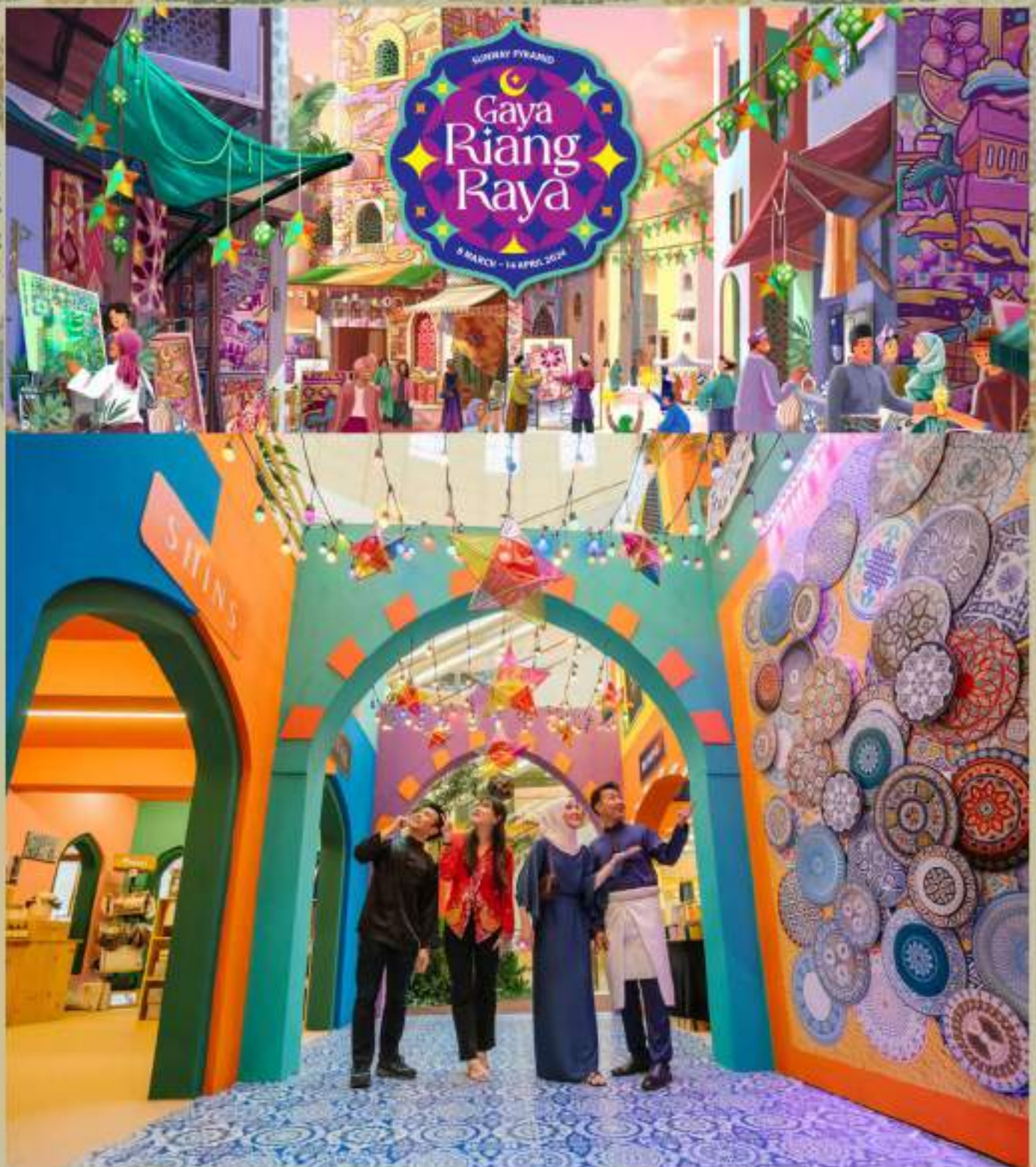
Here, you can experience the grace and fluidity of traditional Tarian Zapin dances, as well as other captivating performances highlighting the essence of Raya celebrations including Wayang Kulit, Kompang Ensemble, Joget Rakyat and many more!





Pavilion Kuala Lumpur- The Radiant Raya

Pavilion KL illuminates with its 'Radiant Raya' festivity, showcasing the rich heritage of Malay textiles, culture, and the brilliance of crystals. Inspired by the celestial allure of the night, the décor sparkles with stars and a grand crescent moon adorning the Centre Court. Collaborating with Swarovski, Pavilion KL presents a spectacular pop-up exhibit, inviting guests to admire exquisite crystal embellishments, including four vibrant installations fashioned in the emblematic Swarovski octagon shape.



Sunway Pyramid @ Blue & Orange Concourse (Available from 8 March to 14 April)

Experience the fusion of tradition and modernity at Sunway Pyramid's Gaya Riang Raya. Step into a vibrant modern Souk adorned with Moorish arches and contemporary motifs. Immerse yourself in the colorful ambiance, blending Malaysian culture with artistic flair. Capture unforgettable moments at a Moroccan-style lounge and engage in family-friendly activities. Celebrate the season at Sunway Pyramid, where every corner radiates the joy of Hari Raya.



Sunway Velocity

(Available from 15 March to 14 April)

Exciting Raya Activities including:

- Glass Painting Workshop (16th March, 28th March, 11th April)
- DIY Raya Decor Workshop (6th April, 13th April)
- Ketupat Weaving Workshop (16th March, 10th April, 14th April)
- Batik Painting Workshop (17th March, 24th March, 10th April)
- Riang Redemption and many more!



1 Utama Shopping Mall- Hikayat Sang Perantau

Get ready to be captivated by our thrilling lineup of Raya performances, transporting you to the heart of Malaysia's rich cultural heritage.

Immerse yourself in the vibrant rhythms of traditional Tarian Joget Raya, the melodious tunes of a classic instrument by Angklung Wat, the enchanting beauty of Tarian Rakyat and the Nostalgia 60an performance that will take you back to the charm of Pantai Timur in the olden days.

Don't miss out on this unforgettable journey through the sights and sounds of Raya at 1 Utama with many more performances coming your way!

Raya Gifts

Corporate Gifts Selections

Raya is the perfect opportunity to express gratitude to clients, partners, employees and employees alike.

Embrace the spirit of generosity and appreciation this festive season with our carefully curated Raya corporate gift selection. Our exclusive editor's picks offer a range of elegant and thoughtful gifts, meticulously chosen to reflect the essence of the season and leave a lasting impression.

From luxurious hampers to bespoke keepsakes, each item is designed to convey warmth, respect, and goodwill. Join us in celebrating the joy of giving and strengthening meaningful connections with our Raya corporate gift selection.





Fruity Raya by Granny Doris (RM 249.00)

Celebrate Raya in a healthy and delicious manner with Granny Doris' Fruity Raya Fruit Box. Packed with a vibrant assortment of fresh fruits, our fruit box offers a nutritious and flavourful way to indulge in the festive season. From succulent oranges to juicy mangoes, each fruit is carefully selected to ensure the highest quality and taste.

Sinaran Bersama Gifts by Eska (RM 300.00)

Each item in our Raya hamper has been chosen with care to capture the essence of the season and convey heartfelt wishes of joy, abundance, and prosperity. Join us in spreading the warmth of Raya celebrations and creating cherished memories with our exceptional hamper collection.



Tea Pyramid Gift Box: Raya Aman By TEA REPUBLIC (RM 65.00)

Crafted with precision and passion, our RAYA AMAN gift box is more than just a collection of teas – it's a celebration of heritage, harmony, and the shared joys of the festive season. Experience the essence of Hari Raya Aidilfitri with every sip, and spread the gift of peace and prosperity to your loved ones with this exceptional tea selection.



Raya Extravagance by Royce Chocolate (RM 500.00)

Experience a celebration of lavish indulgence with Royce's Raya Extravagance gift set, an enticing chocolate assortment designed to elevate your Hari Raya festivities! This exquisite collection features the Malaysia-exclusive Raya Variety Pack alongside your chosen ROYCE' favorites, all elegantly dressed in festive pastel green sleeves. Presented in a sophisticated cream box adorned with intricate gold patterns, this hamper set includes a matching paper bag, a personalized gift card, and a selection of Raya packets, promising a truly delightful Hari Raya experience! Limited availability, so secure yours while stocks last.



Jom Series by Huff & Puff (RM 139.00 - RM 766.00)

Searching for distinctive gifts to share with your family and friends this Ramadan? Introducing you the JOM SERIES by Huff & Puff, featuring three exceptional food curations guaranteed to leave a lasting impression on your loved ones. Let's journey back home with JOM BALIK KAMPUNG! Delve into culinary delights with JOM MASAK-MASAK! And gather together for memorable iftars with JOM BERBUKA!

Raya Kitchen

Easy Nutella Cookies Recipe For Beginners

Though slightly unconventional when it comes to kuih Raya, Mini Nutella Cups are modern variations that have been quickly embraced by many alongside more traditional goodies. This is not much of a surprise – these dainty-looking, doll-sized cups are filled with a moat of oozy Nutella spread.

They are extremely easy to make too – almost as easy as it is to pop them in your mouth one after another.

INGREDIENTS:

- 1 cup (225g) unsalted butter, room temperature
- $\frac{1}{2}$ cup (130g) caster sugar
- $\frac{1}{4}$ cup (130g) brown sugar
- 2 eggs
- 1 tsp vanilla extract
- 2 cups + 3 tbsp (350g) all-purpose flour
- 1 tsp baking soda
- 1 tsp salt
- Nutella spread, or any chocolate hazelnut spread of choice
- Mini paper cups

STEPS:

1. Use whisk or electric mixer to beat butter with caster sugar and brown sugar until light and fluffy.
2. Add eggs in one at a time – whisk after each addition.
3. Beat in vanilla extract.
4. Sift in flour, baking soda and salt.
5. Use a spatula to fold the ingredients until a dough is formed.
6. Press the dough batter to form mini cups on a greased mini cupcake pan.
7. Preheat oven at 180°C and bake cookies for 8-10 minutes.
8. Leave the cookie cups to cool before piping Nutella spread into the cups.



News



Global Landmarks Dim Lights For Earth Hours

Landmark structures worldwide are dimming their lights as a symbolic gesture in support of the environmental cause.

Landmarks around the globe have turned off their lights tonight on 23rd March to mark Earth Hour. The Eiffel Tower in Paris, France, and the Colosseum in Rome, Italy, have joined in darkness, along with the Buddha statue and the Akshardham Hindu temple in India, as part of this yearly environmental initiative led by the World Wide Fund for Nature (WWF). Other prominent monuments participating in the event include the Acropolis in Athens, Greece, St. Peter's Basilica in the Vatican, Italy, and Cologne Cathedral in Germany, among numerous others.

Millions of people can use the 60 minutes to do something positive for the planet, like turning off their lights for one hour, signing a petition, sharing energy saving tips or supporting wildlife, WWF said.

📍 *Big Ben Clock, United Kingdom*



📍 *Gautama Buddha, Hyderabad, India*



📍 *Colosseum, Rome*



📍 *The Telangana State Secretariat Building, India*



The Background

Since the beginning in 2007, Earth Hour has been known for the “lights off” moment, with individuals from around the globe switching off their lights to show symbolic support for the planet and to raise awareness of the environmental issues affecting it.

Now, over 15 years later, the organizers find themselves at a critical juncture with respect to our climate and the health of our ecosystems, endangering the future of our planet and all its inhabitants. They are rapidly approaching the threshold of a 1.5°C increase in global temperatures, as outlined by the Paris Climate Agreement, and our natural world - essential for our survival and a crucial ally in combating climate change - is facing unprecedented levels of degradation and loss worldwide.

The next seven years are pivotal for our future. It is imperative that we remain below the 1.5°C climate limit to prevent irreversible damage to our planet, and we must work to restore nature by 2030, ensuring that we end the decade with more biodiversity than we began with. Achieving these goals requires urgent action from individuals, communities, businesses, and governments to safeguard and rejuvenate our shared home.

How?

With this 2030 goal in mind, we too must step things up. So in 2023, we breathe new life into Earth Hour - our brand, our work, our message, and our mission - creating the Biggest Hour for Earth. How? By calling on our supporters across the globe to switch off their lights and give an hour for Earth, spending 60 minutes doing something - anything - positive for our planet.

Amidst our increasingly divided and polarized societies, the Biggest Hour for Earth becomes a precious moment of unity, reminding the world that our one shared home needs our help and that we all can - and must - play a part in protecting it.

Join the Earth Hours on Last Saturday of March, from 8:30 p.m. to 9:30 p.m. local time; individualism communities, businesses and landmarks are encouraged to switch off their lights for one hour as a symbolic gesture to show their support for environmental conservation.

Source: I-news, United Kingdom



News

Sacred Splendor- Zebun Nessa Mosque/ Studio Morphogenesis

MOSQUE, ASHULIA, BANGLADESH

Architects: Studio Morphogenesis

Area: 6060 ft²

Year: 2023

Construction: IDS Adress Maker

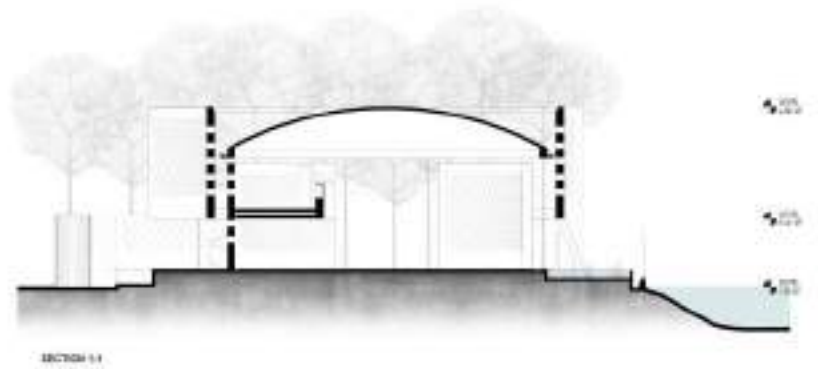
Structural Consultants: TDM

Located on the outskirts of Dhaka City, a striking pink concrete mosque stands adjacent to an existing waterbody amidst a rapidly expanding industrial zone. This monolithic structure serves as a Permeable Pavilion, seamlessly integrating land and water to create a serene sanctuary amid the bustling industrial landscape. Commissioned by the owner of the industrial complex in memory of his late mother, the mosque symbolizes a desire to infuse compassion and tranquility into the harsh industrial environment. Inspired by this narrative, the architect envisioned the mosque as not only a place of worship but also a communal gathering space, fostering a sense of mutual care and solidarity among the owner and the workers.

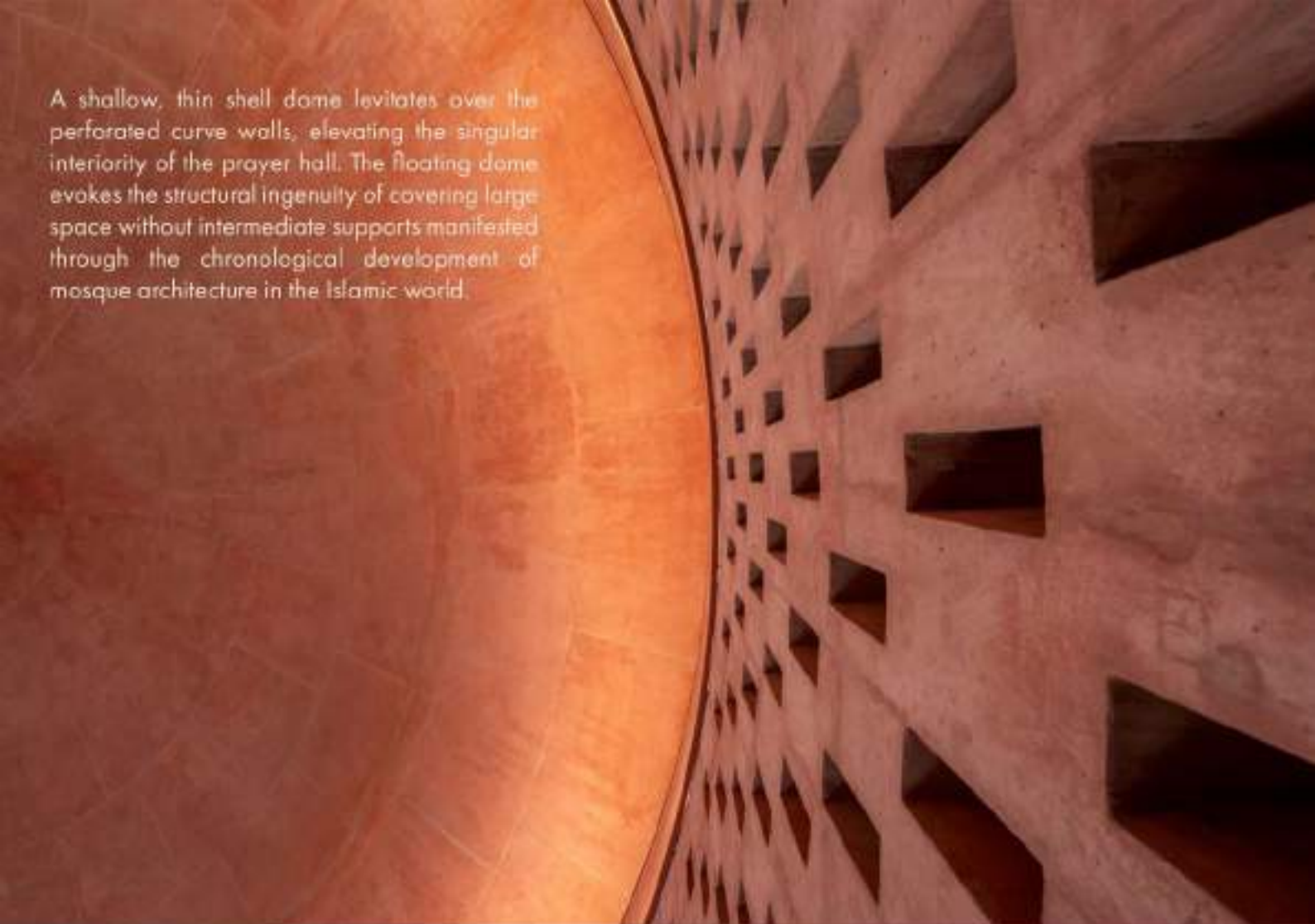



The mosque incorporates elements that allow for filtered natural light and ventilation, creating a "breathing pavilion". The mosque features a simple yet effective design, with a monolithic mass situated on a high plinth, reminiscent of the vernacular house forms built on 'Bhiti' (mound) in the deltaic landform of Bangladesh. The plan of the mosque evolves from simple geometric shapes, with a square surrounding a circular volume, to create four enclosed gardens that serve as light courts on each side. The outer square volume melts into subtle curves in the east and west directions to interact with the site forces. The northeast hanging corner of the curve wall defines the main entry, facing the existing node of the two main internal roads of the industrial compound. The thick concrete walls are perforated with small rectangular voids. Filtered light seeping through the voids resembles hanging lanterns of old mosques.

The mosque is ingeniously designed with double-layered thick walls, creating a microclimatic environment that ensures thermal comfort for worshippers. Strategically placed 'jaali' openings allow sunlight to filter into the garden courts, illuminating the interior spaces while facilitating the dissipation of heat. In consideration of the hot and humid climate, the mosque prioritizes natural ventilation, allowing cool breezes to flow through all openings. The presence of a nearby waterbody further enhances this natural cooling effect, with water flowing from outside pools into the interior prayer hall and outdoor plinth surface. To accommodate the heavy monsoon rains, doors and thresholds are crafted from perforated metal sheets, ensuring a filtered flow of wind while preventing water ingress. These design elements collectively embody the concept of a 'breathing pavilion,' rooted in the architectural traditions of this tropical climate.



A shallow, thin shell dome levitates over the perforated curve walls, elevating the singular interiority of the prayer hall. The floating dome evokes the structural ingenuity of covering large space without intermediate supports manifested through the chronological development of mosque architecture in the Islamic world.





The southeast courtyard of the mosque holds a perforated metal stair connecting to the crescent-shaped upper floor, which is preserved for female workers of the industrial complex. The space serves both as a meeting and prayer space for the women. A 'Chhatim' tree is planted near the stairs to make the space filled with fragrance at the time of full bloom. Participating in the mosque activities caters to a sense of empowerment and belongingness among the female workers in the industry.



The ablution area is thoughtfully crafted to evoke a sense of spiritual reverence during the ritual of purification before prayer. The rustic pink mosaic floor undergoes a transformation, transitioning into a tranquil turquoise hue, symbolizing serenity and inner peace. This blend of turquoise and pink mosaic, accented with meticulously arranged broken brick pieces, pays homage to the mastery of traditional craftsmanship, invoking a sense of nostalgia and connection with shared memories among worshippers. Furthermore, in line with principles of sustainability, the ablution water is recycled and repurposed to nourish the surrounding garden plants, embodying a harmonious balance between spiritual practice and environmental stewardship.



INSIGNIA INTERIOR

Interior Design
Architectural Design
Design & Build
Fit Out Specialist
Project Management

WEBSITE

www.insigniainterior.com.my

FACEBOOK

Insignia Interior

INSTAGRAM

insignia_interior

LINKEDIN

Insignia Interior Sdn Bhd

ADDRESS

75 Jalan Anggerik Emas 1
Taman Anggerik Emas 1
81300 Johor Bahru
Malaysia

CONTACT

016 733 0710

