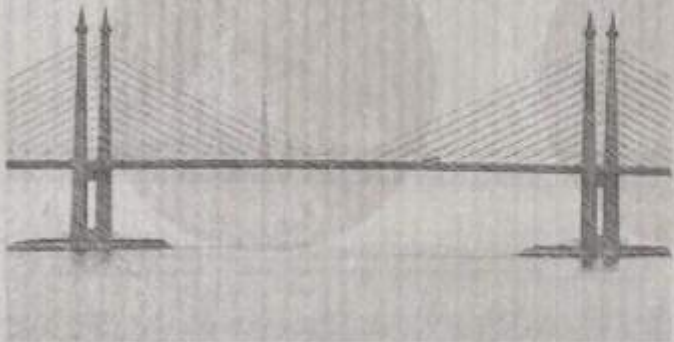


mer



de

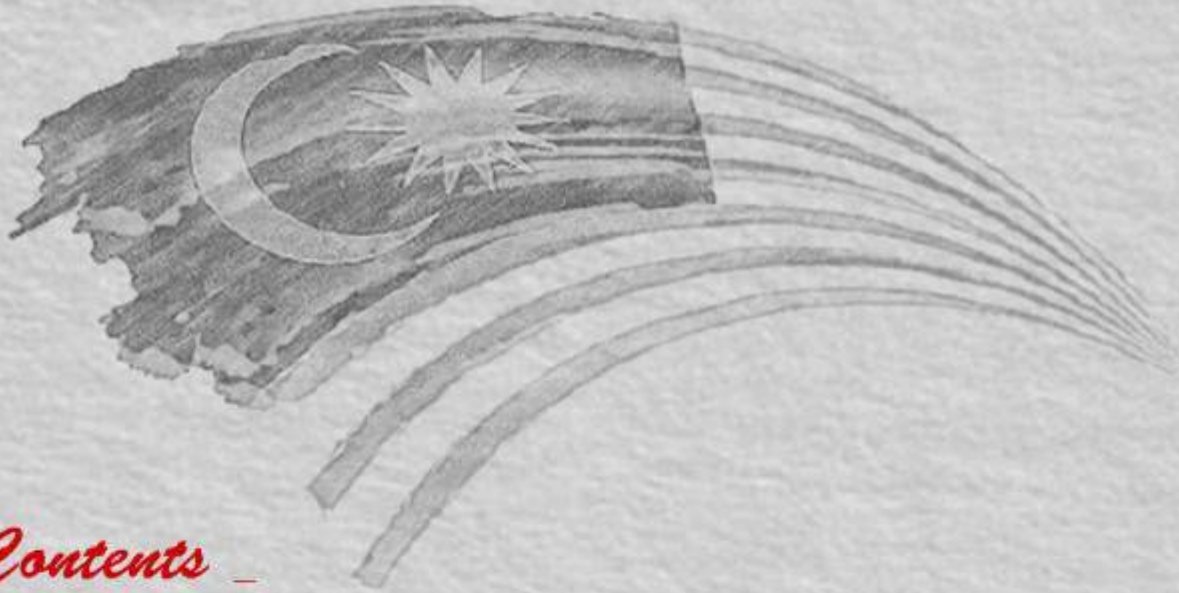


ka



INSIGNIA INTERIOR

ISSUE 07/24



Contents

EDITOR'S NOTE

HEY INSIGNIANS, IT'S MERDEKA MONTH!

PROJECT COVERAGE

P RESIDENCE SALES GALLERY & SHOW UNIT

INS CONCEPT

COZY HOTEL ELEGANCE

TEAM

INSIGNIA SPHERE- INSPIRATION & INSIGHTS FOR MERDEKA MONTH

INS TREND

PATRIOTIC COLOUR SCHEMES- JALUR GEMILANG

QUICK TIPS DIGEST

5 THINGS TO DO IN THIS MERDEKA MONTH

INS FURNI

LUXURIOUS KIDS ROOMS - PLAY & LEARN WITH CIRCU

LOCAL ARCHITECT SPOTLIGHT

HIJJAS KASTURI- THE PIONEER OF MODERN, POSTMODERN AND
DECONSTRUCTIVIST ARCHITECTURE

HAPPENINGS

DESIGN JULY: HIGHLIGHTS FROM THE MUST-SEE EVENTS IN ST MORITZ, CAPRI



Editor's Note

HEY INSIGNIANS, IT'S MERDEKA MONTH!

The entire month of August until the beginning of September is fondly referred to as the "Merdeka Month" in Malaysia, where National Day (Hari Merdeka) and Malaysia Day have been an annual celebration at its grandest scale.

As we come together to celebrate this special month, it's a moment to reflect on the values that unite us as a nation—diversity, creativity, and resilience. In the world of design, these values shine brightly, inspiring us to create spaces that not only reflect our unique cultural values but also push the boundaries of innovation.

This special edition is dedicated to the spirit of Malaysia, hence Insignia has curated features that highlight the rich tapestry of our nation's design landscape—from design inspiration drawn from our national flag, the 'Jalur Gemilang,' to activities for this patriotic occasion. These features are sure to make this year's National Day a memorable one.

To honor the spirit of Malaysia through the lens of interior design, we also invited our team members to share their insights and vision about Malaysia and the future of the local interior design industry. Additionally, we shine a spotlight on one of Malaysia's iconic architects—Hijas Kasturi—whose work has profoundly influenced the architectural landscape of our nation.



Besides our National Day-related content, we're also excited to share the latest news from the interior design industry. Take a peek at the recently completed P Sales Gallery & Show Unit, a project that exemplifies our commitment to excellence. Discover the unique design concept created by the Insignia Team with us—Cozy Hotel Elegance—where comfort meets sophistication in a truly inspiring way.

As you explore this issue, we hope you find inspiration in the way our shared identity influences the spaces we create and inhabit. Let's celebrate the creativity that makes us who we are, and continue to build a future where design is a testament to our collective strength and vision.

Selamat Hari Kebangsaan!





Project Coverage



Project: P. Sales Gallery

Project Involvement: Design & Build

This issue's project coverage features a contemporary sales gallery designed by Insignia Interior, introducing itself with three independent show units, each complemented by a distinct style and concept.

Design Inspiration: Modern Contemporary Style

In the ever-evolving world of the interior design industry, the contemporary concept always stands as a beacon of modernity and sophistication, meticulously crafted to enhance the experience of both the artist and the viewer. The interior of this sales gallery is not merely a backdrop for art but an integral part of the narrative, playing a crucial role in how art is perceived, appreciated, and purchased.

The sales gallery is characterized by all the hallmarks of contemporary design—clean, curved lines, natural materials, stark contrasts, greenery, and natural elements. Speaking of the use of colors, we instill the space with shades of brown and creamy hues to portray a contemporary yet comfortable atmosphere.



THE EXTERIOR .

Facade

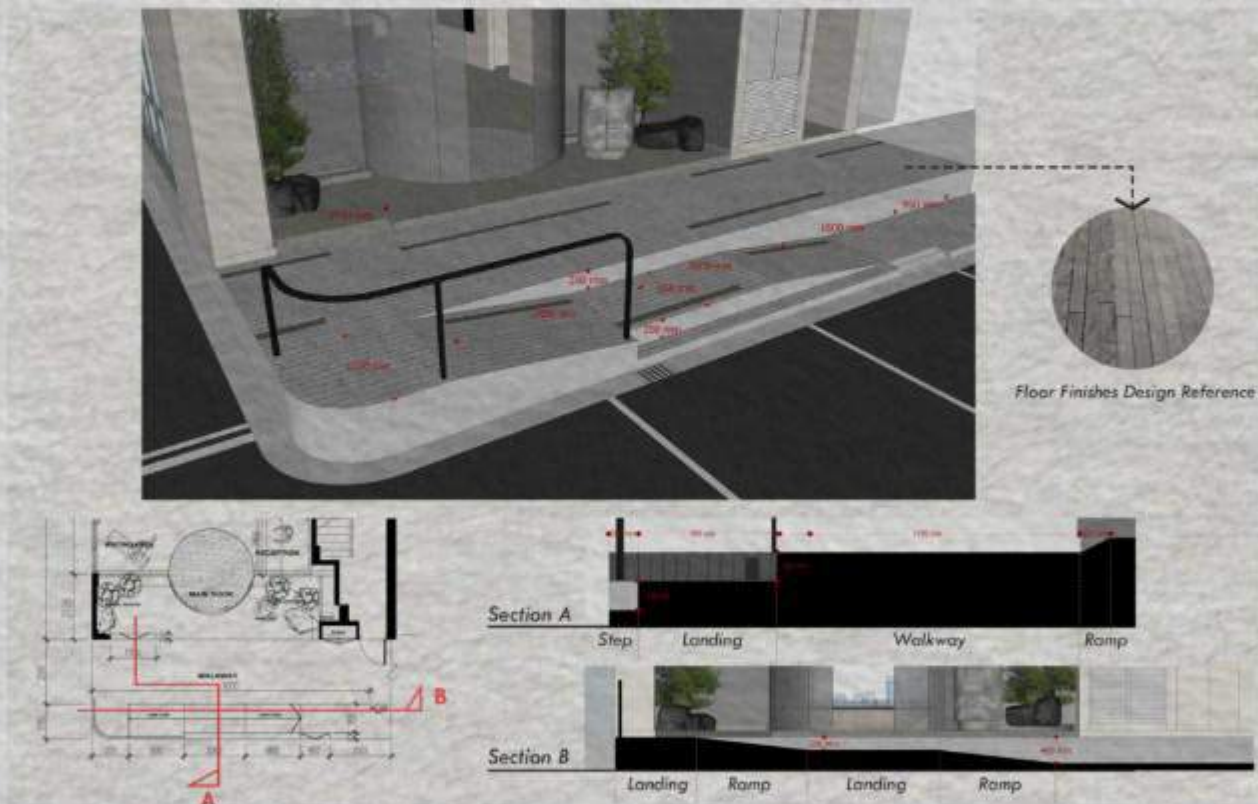
With its clean exterior lines and meticulously designed grid window structure, the building presents a strikingly elegant appearance. By day, the sleek architecture stands out with its minimalist yet impactful design. As night falls, the light shining from the interior transforms the facade into a beacon of warmth and allure, casting a radiant glow that accentuates the building's distinctive identity. This harmonious interplay of structure and illumination ensures that the gallery remains a standout landmark, both by day and night.



THE EXTERIOR .

Walkway

The walkway is specially designed for handicapped and wheelchair users, divided into a few sections- landings, ramps, steps, and wide walkways to ensure good accessibility. High-quality, slip-resistant tiles are used for the flooring to reduce slipperiness and increase traction, providing a safe and stable surface. Every detail prioritizes ease of movement and comfort, ensuring all users can navigate the space confidently.



Entrance Statement

This entrance serves a functional portal that harmoniously blends the exterior with the interior. The modern glass circular door is not merely aesthetic, it breaks down visual barriers and offers an unobstructed view, which the transparency fosters a sense of openness to create an engaging and welcoming atmosphere before one steps inside.

THE INTERIOR .

Space Planning

Space planning is pivotal in shaping the visitor's experience. Our layout encapsulates this philosophy by seamlessly integrating all essential spaces to meet commercial needs, including a reception counter, waiting area, marketing hall, discussion area, bar area, hot seat, working area, and meeting room. Each area is meticulously crafted with a contemporary concept that enhances aesthetic appeal while fostering tranquility and focus, creating an ideal environment for both business and relaxation.



Marketing Hall

The heart of the sales gallery, designed with natural materials like stone and granite, along with neutral colors and ample natural light, create a calm and welcoming ambiance, ensuring visitors feel at ease as they explore and engage with the displays.





THE INTERIOR .

Central Courtyard

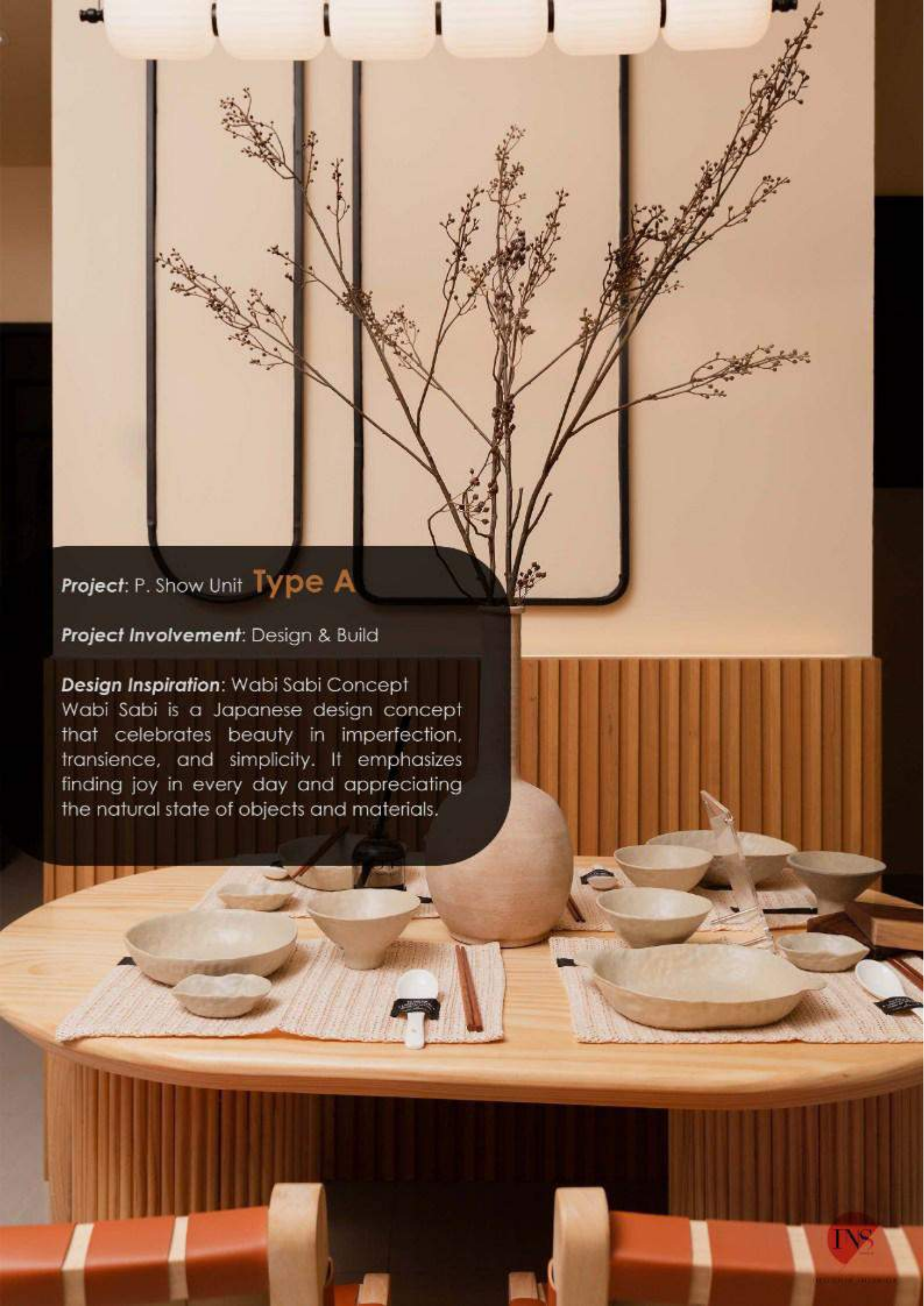
Design treatment- pebblestone flooring and greenery. Surrounding this tranquil oasis, creating a leisure nook that invites relaxation and reflection.



Coffee Bar

The bar area features sleek, modern furniture and subtle lighting, creating an inviting and cozy atmosphere. Whether enjoying a refreshing beverage or engaging in informal discussions, visitors will appreciate the tranquility and elegance of the bar area.





Project: P. Show Unit **Type A**

Project Involvement: Design & Build

Design Inspiration: Wabi Sabi Concept
Wabi Sabi is a Japanese design concept that celebrates beauty in imperfection, transience, and simplicity. It emphasizes finding joy in every day and appreciating the natural state of objects and materials.



Living Room .

In order to create a sense of harmony and serenity in living space, this design concept incorporates unadorned, natural elements that are reflecting the simplicity found in nature.



Kitchen .

This kitchen embraces the essence of wabi-sabi with its natural, unrefined materials and timeless design. Cabinets with slightly uneven edges and rustic finishes exude a sense of simplicity.



Bedroom .

Experience serenity in our wabi-sabi bedroom, where the charm of imperfections, organic materials, and soothing colors create a peaceful haven.



Project: P. Show Unit **Type B**

Project Involvement: Design & Build

Design Inspiration: Contemporary Concept
A sleek and stylish design concept that embodies modern living, with an emphasis on functionality and integration of the living space. This interior showcases the iconic design elements in the contemporary concept- modern upholstery, clean lines and modern hues, resulting in a harmonious blend of form, function and aesthetic appeal.

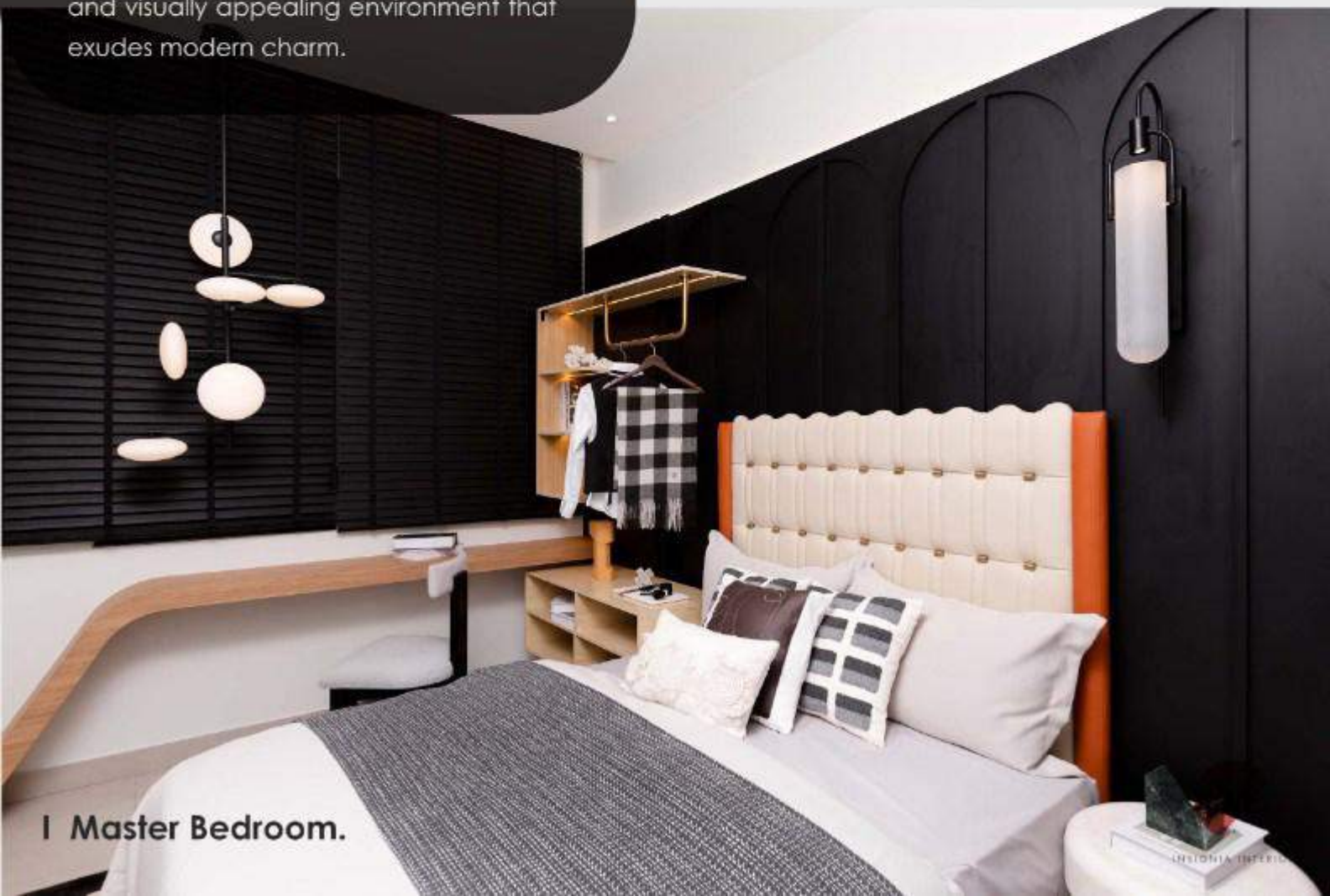
I Dining.





Living .

Every element, from the furniture to the decor, is chosen to create a cohesive and visually appealing environment that exudes modern charm.



I Master Bedroom.

Project: P. Show Unit **Type C**

Project Involvement: Design & Build

Design Inspiration: Portuguese Concept
Inspired by the rich cultural heritage and elements of Portugal, this concept combines materialized Portugal's cultural heritage with contemporary influences, modern craftsmanship and intricate detailing, perfectly complemented with bright earthy tones to create a distinctive and inviting interior.

Dining .

The traditional azulejo-inspired wallpaper is the focal point in this dining room, telling the stories of Portugal artistry.



Master Bedroom .



Kitchen .

Using bold black and vibrant yellow hues blend with traditional elements for a striking and dynamic culinary space.



MNS Concept

Cozy Hotel Elegance / Insignia Interior

In the world of real estate, creating a show unit or house that feels special is key. Imagine stepping into a space that instantly feels like a luxury hotel, with a touch of elegance that makes it unforgettable.

This is the magic of the cozy hotel elegance concept—a blend of comfort and sophistication inspired by the premium hotel design, and see how comfort and charm intertwine to create a warm and inviting sanctuary.

Materials & Colours .

Option 1: Warm Colour + Natural Elements & Soft Elements

With comfortable upholstery & natural elements on furniture, it creates a tactile and inviting feel. The warm color palette enhances this sense of warmth, adding layers of comfort and relaxation to the interior. The highlight of Tricorn Black adds a timeless and trendy touch, perfectly balancing the cozy ambiance.



Option 2: Metallics Palette + Modernist's Preference

This design style prioritizes the elimination of unnecessary ornamentation in favor of clean, unadorned surfaces.

Featuring sleek, straight lines, geometric shapes and a preference for natural materials like wood, stone and metal. Using white and metallic palette as the dominant colors to create a sense of spaciousness, cleanliness and simplicity. Any bold color can be used to add interest and contrast to the space.





Design Outcomes .

Living, Dining & Breakfast Bar

The perfect blend of functionality and style in a versatile space that seamlessly integrates the living, dining, and breakfast bar areas. The chic design, highlighted by soothing beige tones, creates a cohesive and elegant environment.

Living Space

This open-concept layout maximizes space and flow, making it ideal for both casual gatherings and formal entertaining, while maintaining a warm and inviting atmosphere.





Master Bedroom

Luxurious & memorable space opts for a bespoke leather headboard as a piece of art. Playing with some ambient soft lighting to highlight the architectural and design features.

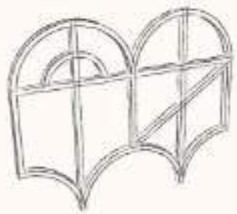
Kids Room
Spark the magical moment with a little bit of playful arrangement & patterns, surely will delight the children while offering the comfort and practicality that parents appreciate.





Bedroom

Enhance the bedroom experience with wooden arched bed backdrop design and rich wood tones in the interior.



Pathway/ Corridor

Transform a small corridor into a stylish passageway with the sleek combination of vinyl flooring, gray premium wallpaper and accentuated by soft lighting. The subtle texture of the wallpaper adds sophistication, while the vinyl floor offers durability and a modern touch.



Team

Insignia Sphere - Inspiration & Insights For Merdeka Month

With National Day and Malaysia Day on the horizon, it's a good time to celebrate the values, culture, and dreams that define our nation. It's also a chance to look ahead, imagining how these inspirations can continue to shape the spaces we call home.

In this special edition, we invite our talented Insignia members, inviting them to share their thoughts and insights on this special occasion. Through the dialogue, we'll explore not just the essence of National Day, but also their personal reflections and bold visions for the future of design in our country.

Q: What are your thoughts in this Merdeka Month?



Lara, Purchasing Team: Embracing Progress and Unity for a Thriving Future.

A: For me, National Day symbolizes the continuous growth and progress of our nation, year after year. As we celebrate this day, I envision a future where our country continues to thrive, embracing innovation and unity while preserving our rich cultural heritage. My hope is that we keep building a society where every individual feels valued and empowered to contribute to the nation's ongoing success.



Angela, Marketing Team: Celebrating Diversity and Unity in a Peaceful Nation.

A: This occasion always reminds me to be grateful for living in a country where peace, ample resources, and a sense of unity are shared among a diverse range of ethnicities. I truly value the inclusive working culture we have, where team members from various cultural backgrounds can come together, not just to collaborate, but to share laughter and stories.

Q: What are your thoughts in this Merdeka Month?



Alia, Quantity Surveyor: Always Feel Contented And Proud While Celebrating National Day.

A: As a Malaysian, I feel grateful and proud to be part of a diverse and harmonious country. Hari Kebangsaan is a time for me to spend with family and friends, often watching nearby fireworks shows together. One unforgettable memory was in 2022 when my friends and I attended the National Day parade in Kuala Lumpur. Despite the crowds, we felt contented and happy, surrounded by fellow Malaysians celebrating the day with joy and unity. We even sang throughout the journey, including on the packed train! National Day holds deep personal significance for me, symbolizing our nation's struggle and resilience in achieving independence. It's also a day to celebrate the unity and diversity that make Malaysia unique. The spirit of unity from Malaysia Day has influenced my approach to teamwork and collaboration, reminding me of the importance of respecting diverse perspectives and working together toward common goals.

Q: How Do You See The Interior Design Trend In Malaysia For The Next 10 years?



Han, Technical Team: Malaysia Is Poised For Global Stage.

A: In my opinion, interior design in Malaysia has the potential to make a significant impact on the international stage. Our design approach has evolved greatly over time, seamlessly integrating the diverse cultures and tastes of Malaysia into our architectural aesthetics. It's no surprise that Malaysia is now poised to compete with other developed countries in this field.



Q: How Do You See The Interior Design Trend In Malaysia For The Next 10 years?



Zen, Conceptual Designer & Wan, Project Management Team:

Sustainable Innovation & Local Cultural Elements are the next movement.

A: In the future, we believe that the interior design trend in Malaysia will likely emphasize eco-friendly materials and smart technology while showcasing the country's rich cultural heritage. We can expect modern, sustainable spaces that integrate traditional elements, offering both innovative features and a deep connection to Malaysian roots.



Evonne, Conceptual Designer: The Fusion of Tradition And Sustainability In Malaysia Interior Design Industry.

A: Malaysian interior design is now renowned for its ability to blend traditional elements with contemporary trends, creating unique and culturally rich spaces that reflect the nation's diverse heritage. Alongside this, there's also an increasing focus on sustainability, with designers incorporating natural materials, energy-efficient solutions, and eco-friendly practices. This fusion of tradition and sustainability not only honors Malaysia's cultural roots but also promotes environmentally responsible design for the future.



Patriotic Color Schemes - Jalur Gemilang!

Colors are more than just visual elements; they shape the mood of a room, tell stories, and evoke emotions. When those colors are inspired by the rich tapestry of national flags, they take on an even more profound meaning.

Patriotic color schemes do more than decorate—they celebrate the heart and soul of a nation, allowing you to weave a sense of pride and belonging into your living spaces.

In this article, we'll journey through the vibrant, symbolic colors of our national flag- Jalur Gemilang, exploring how the colors can be reimaged into captivating interior designs. Whether you want to subtly honor your roots or make a bold, patriotic statement, these color palettes offer a unique way to bring the spirit of your nation into your home. So, let's dive in and discover how to transform your interiors into living expressions of national pride!



The Jalur Gemilang comprises several primary colors and a triadic color scheme of red, blue, and yellow. Using primary colors in any shade or tint is a great addition to liven up the environment, depending on your taste. Also, giving you the freedom to personalize your home with amazingly vivid colors, to colors that promote a sense of tranquility.

Colors of Jalur Gemilang: Strong Red/ Crimson Flame

Decorating a space with strong red can create a bold and dynamic environment, but it's important to consider a few key aspects to ensure the color is used effectively.



Malaysia Flag Red Color
Hex: #CC0000 / RGB: 204, 0, 0
www.flagcolorcodes.com/malaysia



i) Balance and Contrast

Decorating a space with strong red can create a bold and dynamic environment, but it's important to consider a few key aspects to ensure the color is used effectively.

ii) Purpose of The Space

Red is known to evoke strong emotions, including energy, passion, and warmth. However, it may not be suitable for spaces intended for relaxation, like bedrooms or meditation areas, as it can be too stimulating.

iii) Lighting Considerations

The way red appears in a room can vary significantly based on the lighting. Natural light will make red appear brighter, while artificial lighting, especially warm-toned lights, can deepen its intensity. It's important to test the color in different lighting conditions to ensure it achieves the desired effect.



Malaysia Fla
Hex: #FFFFFF /
www.flagcolorcodes.com



Malaysia Fla
Hex: #FFD700 /
www.flagcolorcodes.com



Malaysia Fla
Hex: #003366 /
www.flagcolorcodes.com

Colors of Jalur Gemilang: Dazzling Blue

It's often described as a Dazzling Blue and is associated with a strong, bold, and classic appearance. Designing a space with dazzling blue can create a stunning and serene environment. Here are some tips and ideas for using this vibrant color seamlessly for your interior:



i) Perfect as Focal Point

Use dazzling blue on an accent wall to draw attention and create a focal point in the room. Pair it with lighter neutrals like white or soft gray to make the blue pop without overwhelming the space.

ii) Layer with Different Texture

Incorporate velvet, silk, or linen in dazzling blue to add depth and richness to the space. These textures can enhance the luxurious feel of the color.



iii) Incorporate Complementary Colors

Pair with whites and pop of colours. These can help break up the blue and add a crisp, clean contrast that makes the room feel airy and sophisticated.



Malaysia Flag
Hex: #CC0000
www.flagcolorcodes.com



Malaysia Flag
Hex: #FFFFFF
www.flagcolorcodes.com



Malaysia Flag
Hex: #FFD100
www.flagcolorcodes.com



Malaysia Flag Blue Color
Hex: #0032A0 / RGB: 0, 50, 160
www.flagcolorcodes.com/malaysia

Colors of Jalur Gemilang: Golden Yellow

A golden yellow interior can be both bold and warm, creating a space that feels inviting, luxurious, and full of energy. Here are a few thoughts on incorporating golden yellow into an interior design:

i) Design Styles- Mid-century Modern

Mid-Century Modern: Golden yellow works well with mid-century modern design, paired with wood tones and geometric patterns.

ii) Nature-Inspired

Pair golden yellow with indoor plants to create a harmonious, nature-inspired environment. Also, wooden furniture and natural fibers like jute or linen can balance the intensity of golden yellow, creating a grounded and organic feel.



Malaysia Flag
Hex: #CC0000
www.flagcolorcodes.com



Malaysia Flag
Hex: #FFFFFF
www.flagcolorcodes.com



Malaysia Flag Yellow Color
Hex: #FFD100 / RGB: 255, 209, 0
www.flagcolorcodes.com/malaysia



Malaysia Flag
Hex: #00728D
www.flagcolorcodes.com

Colors of Jalur Gemilang: Pure White

It's the brightest color in the RGB color model and is often used in design for its clean, minimalist, and neutral qualities. Pure white can also be effectively used as a complementary color in interior design, which plays a crucial role in balancing and enhancing other colors in a space. Here's how you can use white as a complementary color:



i) Accentuate with Contrast

Pair white with dark accents or metallic accents like charcoal, navy, black, chrome that add drama and definition to the room.

ii) Artwork and Deco

White walls are perfect for displaying bold, colorful artwork or photography, allowing pieces to stand out. Or, you can introduce a pop of color complemented with white through accessories like throws, vases. This allows for easy updates to the room's look and feel over time.



Malaysia Flag
Hex: #CC0000
www.flagcolorcodes.com



Malaysia Flag White Color
Hex: #FFFFFF / RGB: 255, 255, 255
www.flagcolorcodes.com/malaysia



Malaysia Flag
Hex: #FFD700
www.flagcolorcodes.com



Malaysia Flag
Hex: #003366
www.flagcolorcodes.com

_ QUICK TIPS DIGEST _



5 Things To Do In This Merdeka Month

Celebrating Independence Day and Malaysia Day can be a wonderful way to honor your country's history and culture. Here are some great ideas for celebrating these momentous occasions:



1. Watch The Merdeka Parade

Participate in or watch The Merdeka parades, a cherished tradition in Malaysia which often feature displays of national pride, or marching bands from the police and armed forces

Venue: Dataran Putrajaya (Putrajaya Square)

Date: 31 August 2024 (Saturday)

Time: 7.00am- 2.00pm



2. Appreciate The Local Culture & Cultural Performances

Attend or organize performances showcasing traditional music, dance, and theater. This can be a great way to celebrate the nation's cultural heritage.

Relevant spots for the activities:

- The Malay Cultural Village, Johor Bahru
- National Museum, Kuala Lumpur
- National Art Museum



3. Fireworks Display

Enjoy or organize a fireworks show, which is a classic way to end the day with a bang. Ensure it's safe and complies with local regulations. Here are the top places in Malaysia to catch the most spectacular fireworks displays on this significant day:

Relevant spots for the activities:

- Kuala Lumpur City Centre (KLCC)
- Dataran Merdeka
- Penang Esplanade
- Putrajaya



4. Visit Historical Sites & National Monument

Spend the day visiting historical landmarks related to Malaysia's independence, such as Tugu Negara in Kuala Lumpur, which was built to honor the soldiers who sacrificed their lives in the struggle for Malaysia's independence.

Other relevant spots for the activities:

- Tugu Negara, Kuala Lumpur
- Independence Memorial, Malacca
- Memorial Tun Abdul Razak, Kuala Lumpur
- Old National Palace (Istana Negara), KL

5. Decorate Public Spaces

Work with your community to decorate public spaces with flags, banners, and other symbols of national pride.



MNS Furni

LUXURIOUS KIDS ROOMS - PLAY & LEARN WITH CIRCU .

When it comes to designing a child's room, every parent wants to create a space that is not only functional but also magical—a place where imagination can flourish and dreams can come true.

Welcome to the whimsical world of Circu! Every piece in Circu's collection is more than just furniture; it's a gateway to fantastical adventures and cozy hideaways, crafted with the uniqueness that only Circu can offer.

Circu's furniture collection is more than just a selection of high-end pieces; it's a carefully curated assortment that combines playful creativity with impeccable craftsmanship. Each item in their collection is designed to spark a child's imagination while providing the comfort and durability that parents expect from luxury furniture. From a bed that looks like a whimsical hot air balloon to seating that could belong in a fairy tale, every piece is crafted with attention to detail and a deep understanding of what makes a child's space special.



/ FANTASY AIR BALLOON .

PRODUCT DETAILS

Fantasy Air Balloon Lounge is a themed lounge area, comprised of a marvellous circular sofa, so comfortable that you'll be seated literally in the clouds, and a practical round table. This lounge set invokes the romantic and whimsical ambience of a hot air balloon ride while being the perfect spot for your kids to study, play or simply rest after a school day. The set features and color-changing light and sound system on the top part, and due to its unique design can be easily used in any type of set, from a kids room to a commercial or larger-scale project.

STANDARD FINISHES

Gold plated, Translucid clear glass, Translucid color glass, Lamp G4 LED.

DIMENSIONS

General

Height: 300cm | 118"

Table Diameter: 75cm | 34"

Ceiling

Top Diameter: 300cm | 118"

Bottom Diameter: 126cm | 49.6"

Height: 130cm | 51.18"

Bottom

Diameter: 172cm | 67.7"

Height: 86cm | 33.8"



/ ROCKY ROCKET .

PRODUCT DETAILS

The Rocky Rocket it's a children's interactive chair that will be the perfect addition to any kid's play area. The moon rocket has become an iconic symbol for kids, while parents will recognize it from the adventures of Tintin, kids will relate it to Buzz Light- year from "Toy Story".

The Rocky Rocket has a RGB light and speakers and it can be controlled by a mobile app (or with remote control) and can also be connected by Bluetooth. The app also has a sleeping assistant and you can choose the color intensity of the light and lighting effects.

It is built using top-quality materials such as wood, being robust in design, and dreamy on the interiors, due to its red velvet upholstered walls and cushioned flooring.

STANDARD FINISHES

Glossy Varnish, Velvet Flocking Technique, Gold Leaf, Chrome Plated Finishes.

DIMENSIONS

Width: 200 cm	78,7"
Depth: 160 cm	62,9"
Height: 295 cm	116"





/ MAGICAL MARKET PLAYGROUND .

PRODUCT DETAILS

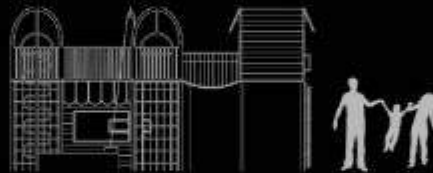
Magical Market Playroom is here to take the category of kids' playgrounds to another level. CIRCU designed a little town entirely made for kids, a place where imagination pops up and dreams become real. In this kid's playground, you have it all: a house that connects with the rest of the playground through a wood ladder with ropes on the side, a kitchenette, and a ball pool. Pastel colors and playful lines collide smoothly so your kids can feel like little adults and live their own dreams.

STANDARD FINISHES

Matte Lacquered, Velvet, Gold Plated and Rope.

DIMENSIONS

Width: 575.5 cm | 226,6"
Depth: 387.5 cm | 152,6"
Height: 310 cm | 122,1"



/ MILO BABY PLAYGROUND .



PRODUCT DETAILS

Inspired by the movie Atlantics, this one of a kind baby playground was made to shape comfort and to keep your little one's safe and sound while he/she travels plays and listen's to her/his favorite story. This playground was made with soft materials and it's big and comfortable enough for you to join in and read some stories with them.

STANDARD FINISHES

Wood and Velvet.

DIMENSIONS

Width: 178 cm | 70"
Depth: 162 cm | 64"
Height: 58cm | 23"



/ SKY DESK .



PRODUCT DETAILS

The Sky Desk is inspired by the Disney movie "Planes 2" character Turbo Dusty, and it's the perfect kids' desk for an airplane room decor. Due to its playful design and inspiration, the homework will become a much more exciting task. In this airplane shaped kids desk, the decorative suitcases work as drawers and you can also find storage compartments in the wings. Dare to be bold and apply the airplane enthusiasm to the children's study area.

STANDARD FINISHES

Fiberglass and Resin, Wood, Rubber, Stainless Steel, Chrome plated finishes, Glossy Varnish.

DIMENSIONS

Width: 225 cm | 88.5"
Depth: 120 cm | 47.2"
Height: 130cm | 51.1"



DOLLY MONKEY BARS .

PRODUCT DETAILS

Dolly Monkey Bars is a kid's wall ladder specially made to keep little ones exercised and provide the ultimate fun. With its modern design and slide feature, this luxury kids ladder wall will be any kid's favorite spot after homework time, and will for sure be a highlight point in any kids' room decor.

STANDARD FINISHES

Light Lakeland Acacia, Matte Lacquered, Velvet.

DIMENSIONS

Width: 296 cm | 117"
Depth: 80 cm | 31"
Height: 165cm | 65"



_ LOCAL ARCHITECT SPOTLIGHT _

HIJJAS KASTURI /

***The Pioneer Of Modern,
Postmodern and Deconstructivist Architecture.***

Hijjas Kasturi is one of Malaysia's most renowned architects, known for his modernist approach and iconic high-rise designs.



'Good architecture has many elements of art. It all depends on how you approach a building, whether you look at it as a mechanical box or as a piece of sculpture.'

- Hijjas Kasturi, Architect, Hijjas Architects and Planners

Asia's Most Influential MY (2021)

Malaysian Institute of Architects Gold Medal (2001)

Tokyo Creation (1998)

ASEAN Award (1990)

HIJJAS KASTURI /

Hijjas Kasturi, a pioneer architect in Malaysia, has played a pivotal role, through his namesake firm, in shaping the nation's unique architectural identity- in the modern, postmodern and deconstructivist styles.

Hijjas Kasturi shaped modern Malaysian architecture by blending modernist principles with cultural identity in his vision for buildings in post-independence Malaysia. Often regarded as the father of Malaysian architecture, Hijjas is also recognized for designing some of the country's most iconic structures, such as the Tabung Haji building, Menara Maybank, and Menara Telekom skyscrapers.

Across The Causeway

Hijjas Kasturi, born into a humble background, achieved success through dedication and what he considers good fortune. Initially training as a draughtsman, he earned a scholarship to study in Australia, where he graduated as an architect and urban planner. After a brief stint working with Singapore's Housing and Development Board, Hijjas returned to Malaysia to teach at MARA University of Technology. There, he founded The School of Art and Architecture and launched the country's first professional architectural degree program.



The departure for Kuala Lumpur was a conscious one, driven by young architect's desire to contribute to nation- building in a country that had only just gained its independence a decade prior.

He later established his own award-winning firm, Hijjas Kasturi Associates Sdn Bhd, now known as Hijjas Architects & Planners, which is currently led by his daughter, Serina Hijjas. Although officially retired, Hijjas, now in his eighties, remains deeply passionate about architecture, often beginning his day with sketching. He also continues to guest-lecture at the institution he founded, works on select projects, and serves as a consultant for his former firm.

Notable Works /

Menara Telekom

Set against the backdrop of the turn of the century, the 55-story high-rise was conceived during a period of growing national self-confidence. Designed to blend seamlessly with its surroundings, Menara Telekom is equipped with systems that enhance energy efficiency and foster communal interaction, embodying the collective desire for progressive change.



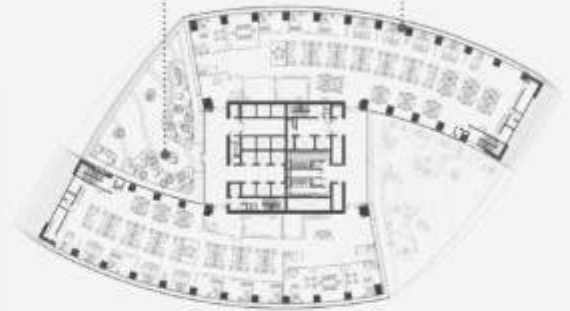
Passive Orientation

Telekom's North-South building orientation coupled with recessed shaded glazing with 200mm setback, greatly reduces the building's OTTV.



Building Envelope

The passive design generates an OTTV of about 3725 W/m² which is one of the best OTTV in a high rise tower through a combination shaded & solid facades on the East and West facing envelope.



Notable Works /



TNB Data Centre, Cyberjaya

In Tenaga Nasional Berhad's (TNB) first Data Centre in Cyberjaya, a comprehensive and sustainable approach was adopted for the design of the building and its supporting infrastructure. Set within a green and resilient environment, the Data Centre is designed with flexibility and future-proofing in mind, incorporating green and low-carbon processes, including both embodied and operational CO2 considerations. This forward-thinking sustainability strategy supports TNB's net-zero agenda, making the Data Centre a pioneering model in Malaysia.



Biophilic Landscape
Trees and rich vegetation create a biophilic environment surrounding the office building.



Insulated Roof
Use of insulation reduces cooling loads which in turn results in overall Building Energy Intensity (BEI) of 110.



Break Out Space
Break out space and atrium is naturally ventilated.



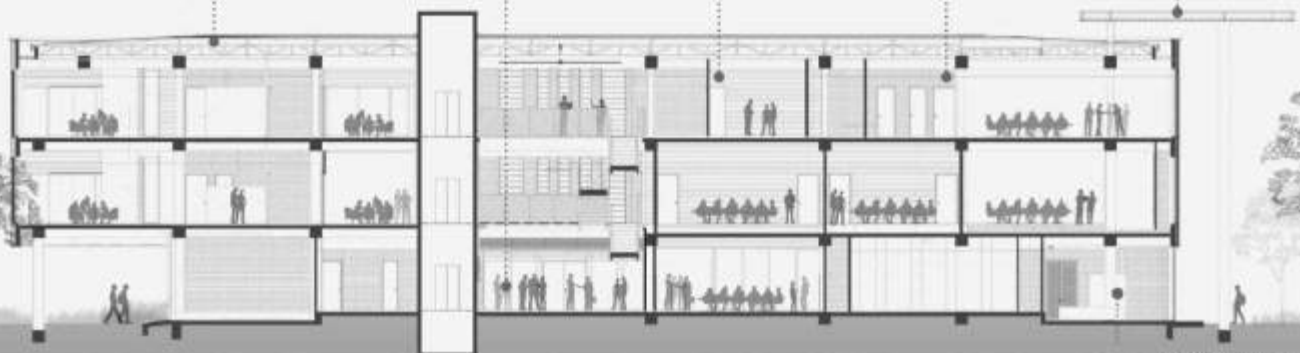
Energy Efficiency
Building efficiency intensity reduction up to 29%. PV solar panel on carpark roof is used as renewable energy source for offices, reducing energy consumption of about 20%.



Brick facade
Brick facade is used to give a more human-centric experience to the data centre.



Shading Device Roof
Steel roof at entrance provide cover from high exposure to solar radiation along building perimeter.



(Source: <https://www.hijjas.com/menara-telekom/>)



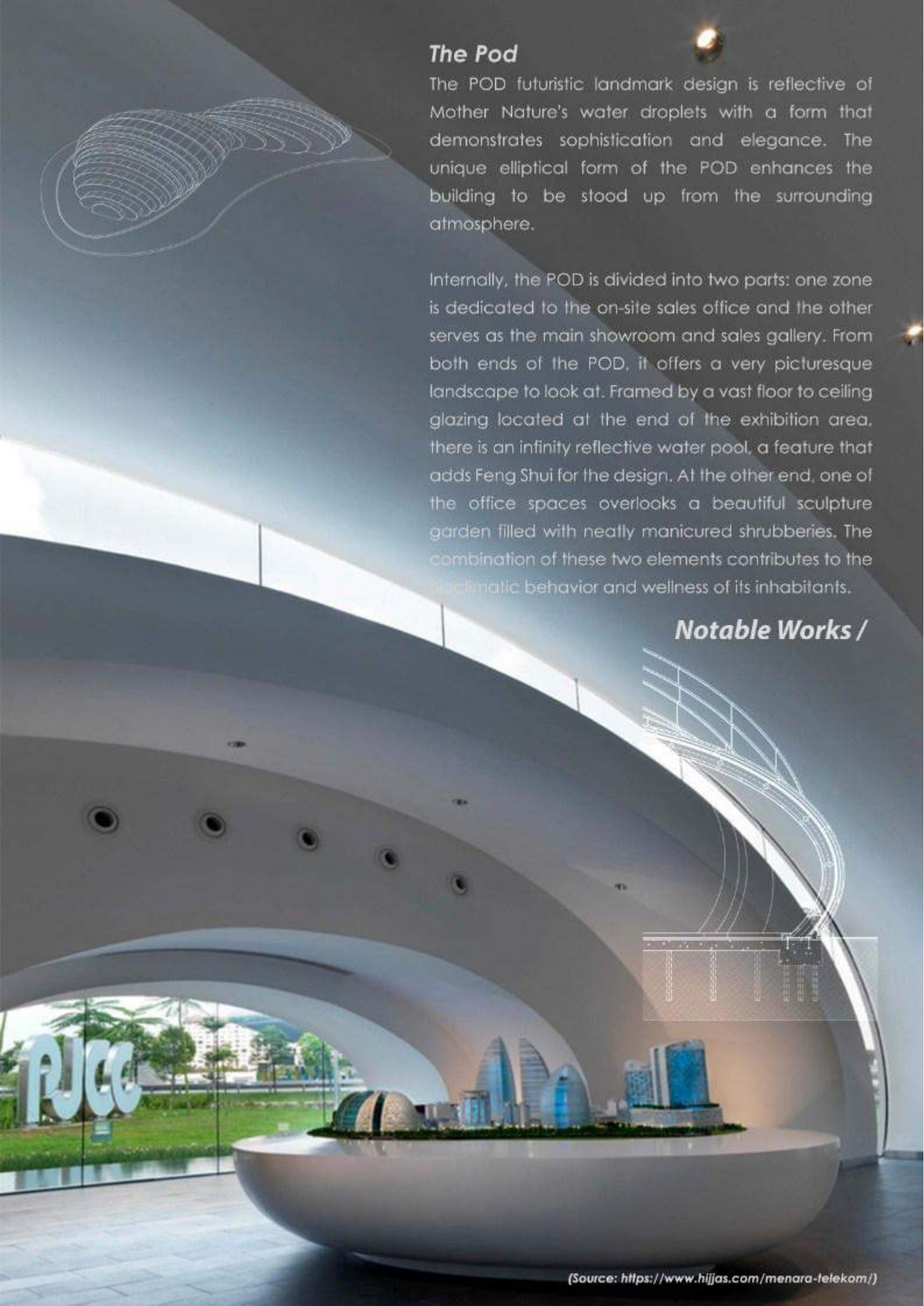
Rain Water Harvesting
Rain water is filtered and filtered to be used for landscape irrigation.

The Pod

The POD futuristic landmark design is reflective of Mother Nature's water droplets with a form that demonstrates sophistication and elegance. The unique elliptical form of the POD enhances the building to be stood up from the surrounding atmosphere.

Internally, the POD is divided into two parts: one zone is dedicated to the on-site sales office and the other serves as the main showroom and sales gallery. From both ends of the POD, it offers a very picturesque landscape to look at. Framed by a vast floor to ceiling glazing located at the end of the exhibition area, there is an infinity reflective water pool, a feature that adds Feng Shui for the design. At the other end, one of the office spaces overlooks a beautiful sculpture garden filled with neatly manicured shrubberies. The combination of these two elements contributes to the bioclimatic behavior and wellness of its inhabitants.

Notable Works /



HAPPENINGS

DESIGN JULY:

HIGHLIGHTS FROM THE MUST - SEE EVENTS IN ST.MORITZ, CAPRI

Nomad-St Moritz/Capri | 4-7 July

The Nomad-St Moritz/Capri event, which took place from July 4 to 7, 2024, was a remarkable gathering for collectible design and contemporary art enthusiasts. Conceived in 2017 by Giorgio Pace and Nicolas Bellavance-Lecompte, NOMAD has completed nine editions in prestigious locations such as St. Moritz, Monaco, Venice, and Cannes (virtual).

NOMAD's mission to travel the world and frequently announce new destinations has allowed it to respond to the growing interest in collectible design and contemporary art among collectors and cultural institutions.

NOMAD's concept is to create unique experiences by holding events in extraordinary architectural locations. This approach highlights the works on display and the venues, establishing a dialog between art, architecture, and design. Summer 2024 will mark the 14th edition of NOMAD, which will be held for the third time in the stunning Certosa di San Giacomo in Capri. This location, known for its historical and architectural importance, provides a perfect setting for the exceptional pieces on display.



Nomad-St Moritz/Capri | 4-7 July

NOMAD's unique format creates an intimate environment where collectors, designers, and artists can interact in a meaningful way. In addition to the main event, NOMAD offers a distinctive VIP program that includes talks by prominent designers and artists, architect-led tours of local landmarks, and exclusive invitations to private homes or collections. This program enhances the overall experience, providing deeper insights into the world of collectible design and contemporary art.

The essence of NOMAD lies in its ability to create a perfect fusion of art, architecture, and design in an intimate setting. In doing so, it rethinks the representation of cultural agency and offers a new perspective on how art and design are experienced. The next edition in Capri promises to continue this tradition, offering participants a unique opportunity to explore and appreciate exceptional works in a stunning setting.





INSIGNIA INTERIOR

Interior Design
Architectural Design
Design & Build
Fit Out Specialist
Project Management

WEBSITE

www.insigniainterior.com.my

FACEBOOK

Insignia Interior

INSTAGRAM

insignia_interior

LINKEDIN

Insignia Interior Sdn Bhd

ADDRESS

75 Jalan Anggerik Emas 1
Taman Anggerik Emas 1
81300 Johor Bahru
Malaysia

CONTACT

016 733 0710

