



CHRISTMAS SPECIAL 2025

# The Jolly Dispatch



# TABLE OF CONTENTS



## EDITOR'S NOTE

## PROJECT COVERAGE

The Design Metamorphosis of Titijaya Seiring-Damaisuria

## BEHIND THE SCENE

PV 21 Apartment- Gym Refurbishment

## INS CONCEPT

The Dual Concepts Home: Designing for Airbnb & Living

## TEAM

Say Hello To Our New Member Shakira!

## LUX DECOR

Luxury Ornaments for a Glamorous Christmas

## IKEA SELECTION

Celebrating A Cozy Christmas with IKEA

## FESTIVE

Fun Facts About Winter Solstice

## HAPPENINGS

Exploring New Lifestyle, Leisure, and Commercial Spots in Johor Bahru!

## TRENDS

Pantone Fashion Color Trend Report Autumn/ Winter 2025/ 2026

## ARCHITECTURE

The Folly / Tarek Shamma

## EDITOR'S NOTE

As 2025 draws to a close, we enter the final stretch of the year—a perfect moment to pause, reflect on our achievements, appreciate how far we've come, and set meaningful goals for the year ahead.

Looking forward, 2026 is shaping up to be an exciting milestone, bringing fresh challenges and inspiring opportunities. Johor Bahru, in particular, is gearing up for transformation with the launch of the RTS Link and several major developments on the horizon. Discover more in our Happenings section to see what's coming to JB next year.

December, of course, brings with it the festive cheer of Christmas. Explore our curated selections in IKEA Selection and Lux Decor for inspiration to style your space and make this season warm, bright, and joyful.

But that's not all—December also holds another meaningful celebration: the Chinese Winter Solstice Festival. Don't miss our fun and insightful piece exploring its origins, traditions, and delicious festive foods.

In every edition, Insignia Features remain the heart of our newsletter. This time, we spotlight our recently completed project—Titijaya Seiring Apartment Common Area—and show how we transformed the space with a design narrative inspired by the project's very own identity: the butterfly.

We also present our design approach to integrating Airbnb functionality with personal living needs in a dual-key unit, ensuring it caters to the evolving demands of modern lifestyles.

And lastly, join us in welcoming our newest teammate, Shakira! Get to know her better in this edition's team introduction.

As we wrap up this festive edition, we hope these stories, inspirations, and updates accompany you into a joyful December. Wishing you a meaningful Winter Solstice, a magical Christmas, and a wonderful start to the new year ahead!

WARMEST GREETINGS  
SIGNEA INTERIOR



## **PROJECT COVERAGE**

### **The Design Metamorphosis of Titijaya Seiring-Damaisuria**

**Project Name:** Titijaya Seiring- Damaisuria

**Project Involvement:** Design & Build for Apartment Common Area

**Client:** Titijaya Land Berhad

"Metamorphosis" means a transformation or profound change in form, structure or character. In nature, it describes the process a butterfly undergoes – from caterpillar → chrysalis → butterfly.

---

### **About The Project**

Seiring Residensi, the first phase of the development, comprises serviced apartments thoughtfully designed for an elegant and contemporary lifestyle.

The residence features four towers, offering a range of unit sizes from 665 sq ft to 972 sq ft, with configurations of up to four bedrooms. Each unit features modern, practical layouts designed to meet the needs of urban dwellers who value both comfort and sophistication, perfectly complementing the vibrant lifestyle of Subang's community.



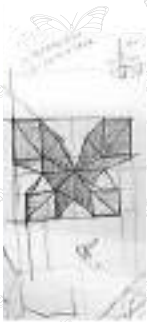
## The Facade Architecture-Colour Palette & 'Butterfly'

The building itself embraces the colour palette 'Urban Palette', embodying an effortlessly contemporary and sophisticated aesthetic. This theme portrays a minimalist appearance, allowing natural textures and raw elegance to take center stage — a timeless appeal that continues to captivate modern sensibilities.

Alluring in its soothing tones, the palette invites you to blend, combine, and contrast subtle hues to create a harmonious and modern space that feels grounded, balanced, and beautifully understated.

## The 'Butterfly' Element

The design of the building façade is inspired by the butterfly — its overall form resembles butterfly wings when the four buildings are viewed from above. The architect translated this idea into the façade design, using the flowing lines of the butterfly wings as the core element and visual identity of the building. In harmony with this concept, our interior design team carried the butterfly motif throughout the interior spaces and common areas, creating a cohesive design language that makes the building instantly recognizable by its iconic wing-inspired features.







## Lift Lobby

The lift lobby presents a raw and natural aesthetic, featuring a blend of metal, wood, stone, and exposed wall finishes. For the ceiling treatment, we introduced a baffled ceiling with linear patterns, adding a distinctive touch that reinforces the overall design identity and makes the space instantly recognizable.





## Gymnasium



The gymnasium carries forward the butterfly-inspired design through a striking ceiling feature. Warm timber tones and dark metal accents frame the space, while mirrors and graphic elements enhance openness and connection to the outdoors. Subtle linear lighting adds rhythm and movement, reflecting the energy of fitness while staying aligned with the overall design identity.





## Multipurpose Hall

The multipurpose hall features a clean and spacious layout, furnished with rows of stackable chairs that offer flexibility for various community events. A pantry and hot-desk area are also incorporated to accommodate ad hoc activities and casual gatherings.



**M&E Works**



**Painting**



# BEHIND THE SCENE

**M&E Works**



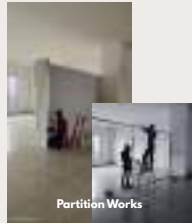
## **PV 21 Apartment-Gym Refurbishment On The Go!**

Exciting things are happening at the PV 21 Apartment gym!

Our team and management are teaming up to give residents a fresh new workout experience from upgraded equipment and snazzy interior finishes to brighter lighting and a smarter layout for ultimate flow and functionality.

Can't wait to show you the results – stay tuned!

**Partition Works**



# INS CONCEPT

## The Dual Concepts Home: Designing for Airbnb & Living



Dual-key units have become one of today's most sought-after housing trends, offering homebuyers a flexible living arrangement that adapts to their lifestyle needs. Whether for personal living, investment, or both, this concept allows owners to switch between modes with ease.

Our team has designed a dual-key concept that caters to both — those who wish to enjoy their own private space while also generating income through platforms like Airbnb. We truly believe that this will be a thoughtful approach to modern living that combines practicality, comfort, and versatility in one home.

## CONCEPT 1 (PERSONAL LIVING)- WARM LIVING JAPANESE CONCEPT



### 1. Functional Layout:

- Designed for comfort and everyday use.
- Spaces flow naturally — the kitchen connects directly to the dining and living areas, creating an open, homey environment.

### 2. Living Space (04):

- Circular layout area suggests a cozy, lounge-style living space — ideal for relaxation and family time.

### 3. Bedroom (05):

- Larger, more private master room.
- Positioned away from the entrance, giving a sense of seclusion and personal comfort.

### 4. Details:

- Small study or corner chair (07) indicates personalization and daily living habits.
- Laundry space (06) included for practicality.



### **Wabi Sabi Mood Board**

the perfect material palette for creating a calm and soulful living space.





## CONCEPT 2: HOTEL ROOM SETTING



### 1. Functional Layout:

- More compact and symmetrical, catering to short-term stays.
- Focuses on visual balance and convenience rather than daily routines.

### 2. Living Space (04):

- The "Living 2" area includes a daybed sofa, which can double as extra sleeping space for guests — ideal for maximizing occupancy.

### 3. Dining & Kitchen (02-03):

- Smaller scale and efficient setup, suitable for simple meal prep by guests.

### 4. Bedroom (05):

- Clean, straightforward design with space for essential furnishings — easy for guests to use and for hosts to maintain.

### 5. Details:

- No visible laundry setup, minimizing maintenance complexity for short-term rentals.



### **Premium Wabi-Sabi**

combines raw textures with elegant finishes, giving the space a calm, luxurious and hotel-inspired ambience.





# TEAM

Say Hello To Our New Member Shakira!

## ALL ABOUT ME

Hello! I'm  
Shakira!

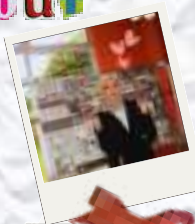
*Interior Designer*

*Hobbies: Cafe hunting is my thing! I love exploring new spots, soaking in the vibes, and getting inspired by the interiors.*

*I'm great at picking colours that make a space feel alive, warm, and welcoming. I love mixing tones and textures to set the right mood whether it's chill, vibrant, or super cozy.*

*Things that make me happy :*

- Cafe Hopping*
- Exploring New Spots*



# Q&A Session With Shakira!



## 1) WHAT DREW YOU TO INTERIOR DESIGN IN THE FIRST PLACE?

Honestly, I've always been obsessed with how spaces feel. I used to rearrange my room just to see how the vibe changed. Interior design felt like the perfect way to mix creativity with real life impact.

## 2) HOW DID YOU JOIN INSIGNIA AS AN INTERN?

I came across Insignia's work online and was instantly hooked by their aesthetic. I sent in my portfolio, hoping for the best, and luckily they saw something in me. That's how I got my foot in the door!

## 3) HOW HAS YOUR JOURNEY WITH INSIGNIA BEEN SO FAR? ANY MEMORABLE EVENTS AT INSIGNIA?

It's been amazing. The team is super supportive, and I've learned so much at Insignia.

## 4) WHAT HAVE YOU LEARNED THE MOST DURING YOUR INTERNSHIP?

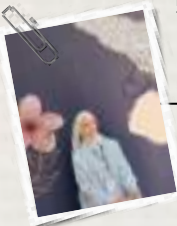
Adaptability, for sure. Every project throws something new at me. I've also learned how to balance dreamy ideas with practical stuff like budgets and timelines.

## 5) WAS THERE A PARTICULAR PROJECT THAT HELPED YOU GROW OR CHALLENGED YOU THE MOST?

Yes! I did a 3D showroom design . It was a fun challenge that really pushed me to think about layout, flow, and how to make the space feel real and cozy even in digital form. I learned a lot and it definitely helped me grow.

## 6) HOW WOULD YOU DESCRIBE YOUR DESIGN STYLE OR APPROACH?

I lean toward modern minimalism with cozy touches , natural textures, and warm lighting. I always start by thinking about how people will actually use the space.



# LUX DECOR

## Luxury Ornaments for a Glamorous Christmas

Get ready to deck the halls with a little extra oomph! This year, we're unwrapping a sparkling series of luxurious Christmas ornaments that promise to make your tree the true superstar of the season. Think shimmering textures, dazzling details, and that "where-did-you-get-this?" kind of charm. Whether you're going for classy, cheeky, or a touch of magical mischief, our ornaments are here to sprinkle a whole lot of joy — and just the right amount of glamour — onto your festive celebration. Let the tree-glow-up begin!

### WATERFORD SERIES

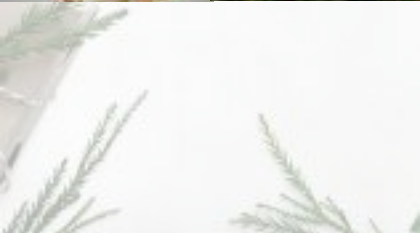
#### THE ANGEL ORNAMENT \$110

The Angel Ornament captures the beauty and grace of a guardian angel in exquisite crystal, with intricate cuts designed to reflect light in all directions. Stunning crystal clarity adds a touch of splendor to this classic symbol, bringing a warm, radiant glow to your holiday decor. Hung from a Waterford-branded ribbon, this angel ornament is a thoughtful keepsake for honoring special moments and loved ones. Presented in a signature Waterford box and cloth bag, it's a cherished piece for any collection.



## DUNGARVAN ORNAMENT \$70

Celebrate the beauty of Waterford's heritage with the Holiday Heirlooms Dungarvan Silver Ornament. Inspired by the iconic Dungarvan cut pattern, this bauble features intricate designs in red and gold glitter, accentuated with delicate mini gems. Set against a silver background, this ornament is a tribute to Christmas. Hand-painted and adorned by European artisans, each piece is one of a kind. Presented in a Waterford-branded Fjord box with a clear lid and strung with a white grosgrain ribbon, it's a perfect addition to any holiday collection.



## SWAROVSKI SERIES

### HOLIDAY MAGIC CLASSIC STARS RM479

A dazzling star lies at the heart of any holiday décor. This shimmering piece offers a fresh interpretation of the classic motif with 288 radiant facets and silver-tone metal accents. Twelve flatback stars in large and small sizes surround the center, each produced with Swarovski's mesmerizing Aurora Borealis effect. Suspended from a white grosgrain ribbon, this ornament is a wondrous piece that will bring joy throughout the season.



### GEMA HOLIDAY ORNAMENT RM759

Inspired by the vibrant Gema family, this collection of radiant snowflake ornaments is presented in Swarovski brand colors with a nod to the holiday season. This red piece is formed from 86 individual crystals in a variety of cuts and shades, applied on both sides using jewelry stone setting techniques. The design is suspended from a red grosgrain ribbon and is completed with a glossy gold-tone finish. Collect all four of the Gema snowflake ornaments to create a joyful multicolored display in your home.



## **MARK ROBERTS CHRISTMAS 2023- KING'S JEWEL BALL ORNAMENT, COPPER SHINY RM1300**



Elevate your holiday styling with the King's Jewel Ball, an ornament crafted to shine with timeless luxury. Wrapped in a lustrous copper finish, this piece brings a warm, radiant glow that instantly enriches your Christmas ambiance.

Every detail is thoughtfully refined, capturing the beauty and intricacy of a jewel-inspired design. Its craftsmanship speaks of elegance—delicate, deliberate, and designed to mesmerize from every angle.

The ornament's polished copper sheen enhances its brilliance, creating a luminous focal point amid your festive décor. Whether standing alone or complementing other premium ornaments, the King's Jewel Ball serves as the perfect accent that adds depth, texture, and sophistication to your tree.

## LALIQUE SERIES

### FROST CRYSTAL ORNAMENT RM 600

This delicate snowflake, covered in a fine layer of frost, captures a subtle moment of fresh winter mornings. It seems to freeze in time an instant of purity, where the frost forms and sparkles under the first rays of daylight. Embodying the fleeting beauty of winter, the frosted snowflake crystallizes the fragile enchantment of nature.

Hanging at the heart of the fir tree, the Frost Christmas ornament becomes a good luck charm. Radiant in clear crystal, sparkling in gold luster, it is a symbol of winter's brilliance and the magic of the holiday season.



# FURNI

## Celebrating A Cozy Christmas With IKEA



Featuring IKEA's Christmas collection has long been a cherished tradition at Insignia. Their festive pieces bring warmth, joy, and a touch of Scandinavian magic into our holiday celebrations—turning every home into a cosy Christmas haven. This year, we're excited to showcase our favourite picks—from lighting decoration to cozy living room touches and beautifully styled dining setups. Let IKEA inspire your most joyful holiday moments yet.

## FESTIVE NIGHTS, MERRY LIGHTS



### **STRÁLA**

LED decorative table lamp, ball shaped battery-operated/white

The natural paper texture, round soft shapes, and warm glow bring a soothing, welcoming atmosphere to any space. Being battery-powered, you can place the lamp anywhere you like—whether for a moment or for the long term.

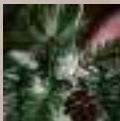
### **VINTERFINT**

Candlestick, for 4 candles white, 4 cm

Bring a warm glow to your festive table with this beautifully crafted candlestick. Its sleek design adds a touch of modern sophistication, while the soft flicker of candlelight creates a cozy, inviting atmosphere perfect for Christmas gatherings. Made with quality materials, it complements any holiday décor, from minimalist to traditional.

## STRÅLA

### LED lighting curtain with 48 lights, outdoor star



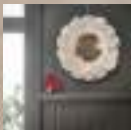
The star-shaped LED curtain brings a glowing focal point to your space, adding an extra touch of festivity. It's perfect for decorating walls or windows, both indoors and outdoors

---

## STRÅLA

### LED wreath, battery-operated/doves white

This dove-inspired light ornament brings a soft, peaceful glow to your space, ideal for doors or bare walls that need a little holiday charm. Its LED lighting is energy-efficient, using 85% less power and lasting up to 10 times longer than incandescent bulbs.



---

## STRÅLA

### LED candelabra, candle-shaped battery-operated/red



STRÅLA LED candle and candelabra spread their light and create a cosy, pleasant vibe in your home – especially for holiday celebrations during the winter months that are often dark. Battery-operated.

## STRÅLA

Lamp shade, lace/white, 48 cm

This small star-shaped lampshade spreads a warm, cosy light that makes your home feel inviting. Combine it with a LED bulb and a cord set or lamp base and let it shine.



---

## STRÅLA

LED lighting chain with 80 lights, battery-operated mini/star gold-colour



A delicate lighting chain adorned with small twinkling lights, ready to sprinkle sparkle at anywhere you hang it.

## TINY TOUCHES, BIG CHRISTMAS FEELINGS

### VINTERFINT

Jar with lid, snowman white



This snowman quickly becomes a favourite with treats hidden under his hat. When everything's eaten, he happily stands as a cute ornament. Preferably with his best friend, VINTERFINT Santa jar with lid.

---

### VINTERFINT

Decoration set of 2, goat red

These two Christmas goats have influences from traditional Swedish woodcraft. Made of leftover material from coffee table production and with a clean-lined design that adds a modern twist



---

### VINTERFINT

Decoration, Santa Claus 14 cm



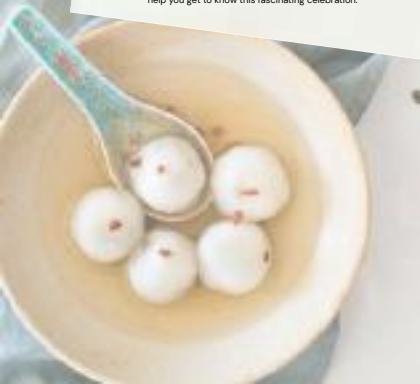
What would Christmas be without a Santa Claus? This one will help you get in the right mood and happily keeps you company while you set the table or decorate your home.

FESTIVE



## FUN FACTS ABOUT WINTER SOLSTICE!

December isn't just about Christmas cheer—it also brings a special festival in Chinese culture: the Winter Solstice! It might sound unfamiliar to some, but don't worry—we've got some fun facts to help you get to know this fascinating celebration.



## Background & Origins

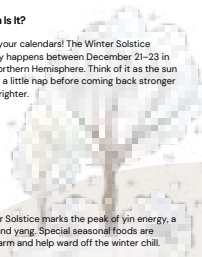
Ever wondered why the nights suddenly feel extra long? That's the Winter Solstice, the shortest day and longest night of the year! Ancient humans were just as fascinated as we are today. For them, it wasn't just about darkness—it was a celebration of light, rebirth, and the promise of longer, sunnier days ahead.

## Food! Glorious Food!

In Traditional Chinese Medicine, the Winter Solstice marks the peak of yin energy, a key time to restore balance between yin and yang. Special seasonal foods are enjoyed across China to keep the body warm and help ward off the winter chill.

## When Is It?

Mark your calendars! The Winter Solstice usually happens between December 21–23 in the Northern Hemisphere. Think of it as the sun taking a little nap before coming back stronger and brighter.



### Dumplings (jiǎozi)

Especially popular in Northern China, dumplings symbolize wealth and prosperity with their gold-ingot shape. Eating them during the Winter Solstice is believed to keep the body warm and ward off frostbite, while making dumplings together becomes a joyful family tradition.




### Tangyuan (tāngyuán)

Tangyuan are sweet glutinous rice balls whose round shape symbolizes completeness, unity, and family reunion. Served plain or filled with sesame or peanut paste, and sometimes with ginger syrup, they are a meaningful symbol of togetherness and harmony on this special day.



### Rice cake (niángāo)

In Hangzhou, rice cakes are a Winter Solstice tradition, often enjoyed at every meal on this special day. Called (niángāo), they sound like “high year,” making them a symbol of growth, progress, and prosperity.



## Celebration Worldwide

### Northern China

Dumplings, dumplings, and more dumplings! Families gather to cook, eat, and laugh together.

### Southern China:

Sweet tangyuan takes the spotlight, symbolizing togetherness and harmony.

### Malaysia:

While it's tropical here, Chinese communities still celebrate with family gatherings, delicious foods, and a nod to cultural traditions.

## Traditions & Taboos

The Winter Solstice isn't just about fun and food—it comes with a few “do's and don'ts.” In some Chinese traditions, it's a no haircut day (bad luck!) and definitely no arguing (keep the peace, people!). Many cultures light candles or small fires to invite warmth and light into their homes, symbolizing hope and the brighter days ahead.

So, whether you're making dumplings, lighting candles, or just cozing up under a blanket, the Winter Solstice is the perfect excuse to celebrate family, light, and the magic of the season!

# HAPPENINGS

Exploring New Lifestyle, Leisure, and Commercial Spots in

*Johor Bahru*



Johor Bahru is buzzing with fresh energy — with the upcoming RTS link, the announcement of Visit Malaysia Year 2026, and a booming wave of new housing developments, the city is gearing up for an exciting new chapter filled with upgrades and commercial growth!

From lifestyle hubs to vibrant retail spaces and inspiring mixed-use developments, JB is transforming into a must-visit destination for both locals and travelers. Whether you're searching for a new weekend hangout, a stylish shopping spot, or a work-friendly leisure hub, the city's latest additions promise fresh experiences at every corner.

Let's dive into what's new — and what's about to be the next big thing — in Johor Bahru!



## THE BIG MAKEOVER AT JOHOR BAHRU CITY SQUARE

Johor Bahru City Square, one of the city's most iconic malls, is undergoing a major transformation to welcome a new generation of visitors. Leveraging its strategic location right next to the CIQ checkpoint, the mall is positioning itself as an even more attractive stop for local shoppers and cross-border travellers. With its upcoming upgrades, City Square is set to elevate the shopping experience and reclaim its spot as a must-visit destination in the heart of JB.

### What's Changing?

- **Retail Expansion:** The mall's retail space will grow from 547,076 sq ft to 568,927 sq ft, and the number of shops will increase from around 247 to over 300.
- **Themed Retail Zones:** There will be curated floors with different themes like *Fashion & Athleisure*, *Home & Hobbies*, *International Fashion & Cosmetics*.
- **Kids' Adventure Park:** A 15,000 sq ft play area for children, designed to make the mall more family-friendly.
- **Health & Wellness Hub:** A 41,300 sq ft holistic wellness space that could include fitness, beauty, massage, and more.
- **Event Spaces:** More flexible areas to host pop-ups, community events, and large-scale gatherings.
- **Hotel Apartments:** Above the mall, there will be *hotel-style apartments*, introducing a live-work-play concept. These are expected to be completed around Q2 2028.
- **New Facade & Interior:** The mall will get a refreshed, modern façade and more intuitive, open interiors to improve the shopper experience.

## **SKS CITY MALL, JOHOR BAHRU- A Fresh Urban Retail Hub**

SKS City Mall is a new mixed-use development in Johor Bahru, set to open around 2026. Located in the heart of JB City Centre, it sits directly beneath a brand-new 345-room Sheraton hotel – a combination that makes the mall not just a shopping destination, but also a convenient stop for both tourists and locals.

With about 280,000 sq ft spread over 4.5 levels, SKS City Mall is designed to be spacious and airy. Its architecture features large windows and a glasshouse-style ceiling, allowing a lot of natural light to filter in – which gives the space a relaxed, open feel.

### **What will be inside?**

-Palates & Bagels, Pacific Kopi, Ming Ang Confectionery, Beutea, ZUS Coffee, KKV, Miniso, Skecher, Jungle Gym, Village Grocer...

## **DANGA BAY- THE NEXT WATERFRONT LIFESTYLE HUB**

Johor Bahru is getting a brand-new 5.7-acre public park along Danga Bay, set to open in February 2026 as part of Johor Tourism Year 2026. With a construction cost of RM23.5 million and currently 31% complete, the park promises to be a fresh spot for locals and visitors to relax and enjoy the city's waterfront.

The park will have comfy pedestrian walkways, an elevated skybridge, a kids' play area, and plenty of spots to chill, all surrounded by lush greenery. What makes it really special is that it's set to be Johor's first smart park, complete with smart lighting, CCTV, and public Wi-Fi, perfectly aligning with the state's push towards a smart city. The council hopes this project will be a game-changer for leisure along Johor Bahru's coastline, turning the park into a new city landmark and a must-visit spot in Iskandar Malaysia.

## **HORIZON MALL: A New Lifestyle Destination In Iskandar Puteri**

Located within the thriving Horizon Hills township, Horizon Mall is set to become one of Johor Bahru's most refreshing lifestyle destinations.

Scheduled to open in 2026, this open-air, nature-inspired mall will feature biophilic design, breezy walkways, and a relaxed outdoor-meets-indoor atmosphere. The mall will house Village Grocer, over 30 F&B outlets, specialty lifestyle stores, a 24-hour fitness centre, and family-friendly highlights such as an indoor playground and nature-themed play park.

With scenic views overlooking the Horizon Hills Golf Course, Horizon Mall aims to create a vibrant community hub where dining, leisure, wellness, and retail come together in one charming destination.

## **BUKIT CHAGAR RTS MIXED-USE DEVELOPMENT: JB's Next Big Hub!**

Set right next to the upcoming Bukit Chagar RTS Station, the RM 2.6 billion mixed-use development is set to redefine Johor Bahru's cross-border and urban landscape. Slated for partial opening in 2026, the project will feature a retail mall, four high-rise towers for serviced apartments and a hotel, health and wellness facilities, and even educational spaces.

A key highlight is the park-and-ride facility, offering over 1,500 car bays to serve commuters, while smart design encourages public transport use and seamless connectivity to Singapore via the RTS Link. With its mix of shopping, living, and leisure all in one hub, this development promises to become a major economic and lifestyle catalyst for JB — and a gateway for both local and cross-border visitors.

# TRENDS

## PANTONE FASHION COLOR TREND REPORT AUTUMN/ WINTER 2025/ 2026 EDITION

*'Imbued with a feeling of effortless glamour, colors for NYFW Autumn / Winter 2025 / 2026 are approachable and accessible.'*

**Leatrice Eiseman, Executive Director of the Pantone Color Institute**

Pantone LLC, the global authority on color and provider of professional color standards for the design industry, has released the Pantone® Fashion Color Trend Report for Autumn/Winter 2025/2026 in conjunction with New York Fashion Week (NYFW). Although Pantone has not yet announced the Color of the Year for 2026, this season's report offers a glimpse into emerging shades and key trends that are shaping the fashion world, hinting at the tones that could define the upcoming year.

Published by the Pantone Color Institute, the company's trend forecasting and color consultancy division, the report highlights the top ten standout colors for the season, along with five new seasonless shades expected to appear as fashion designers unveil their Autumn/Winter 2026 collections.

Pantone Color Institute experts describe the NYFW Autumn/Winter 2025/2026 palette as poetic, striking a balance between relaxed ease and understated elegance. The collection sparks a vibrant conversation between timeless neutrals and bold, deep seasonal tones, introducing a dramatic yet inspiring framework that invites personal creativity and self-expression. By weaving together familiar hues with shades that evoke optimism for the future, the Autumn/Winter 2025/2026 colors guide us toward authenticity and a more purposeful, meaningful way of living.

## TOP 10 STAND OUT COLOUR



**Lemon Grass (Acacia) 13-0640 TCX**  
A lemon-infused green with a softly floral note — fresh and optimistic

- Color System: Fashion, Home + Interiors
- Color Library: Cotton TCX
- Color Family: Green-Yellow



**Color Name: Marina 17-4041 TCX**  
A calming maritime blue.

- Color System: Fashion, Home + Interiors
- Color Library: Cotton TCX
- Color Family: Purple-Blue



**Color Name: Muskmelon 15-1242 TCX**  
A muted, slightly spicy orange — warm and comforting.

- Color System: Fashion, Home + Interiors
- Color Library: Cotton TCX
- Color Family: Orange



**Color Name: Alexandrite 18-4835 TCX**  
A rich teal / deep blue-green that feels luxurious and a little vintage.

- Color System: Fashion, Home + Interiors
- Color Library: Cotton TCX
- Color Family: Blue



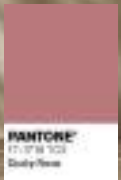
**Color Name: Amaranth 19-2410 TCX**  
A deep, intense purple with a dramatic, vintage-glamour quality

- Color System: Fashion, Home + Interiors
- Color Library: Cotton TCX
- Color Family: Red



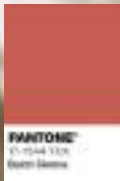
**Color Name: Lava Falls 18-1552 TCX**  
A bold, robust red with a warm, seasoned feel

- Color System: Fashion, Home + Interiors
- Color Library: Cotton TCX
- Color Family: Orange



**Color Name: Dusty Rose 17-1718 TCX**  
Soft, delicate, and slightly glowing- gentle and romantic

- Color System: Fashion, Home + Interiors
- Color Library: Cotton TCX
- Color Family: Orange



**Color Name: Burnt Sienna 17-1544 TCX**  
Burnt Sienna is a russet red that inspires us to rediscover the regenerative power of nature.

- Color System: Fashion, Home + Interiors
- Color Library: Cotton TCX
- Color Family: Orange

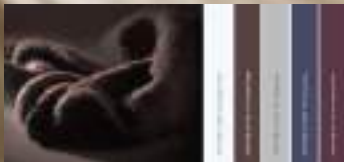


**Color Name: Burnished Lilac 15-1905 TCX**  
Burnished Lilac is a tinged and smokey lavender tone with a perfumed vintage feel.

- Color System: Fashion, Home + Interiors
- Color Library: Cotton TCX
- Color Family: Red

## THE SEASONLESS SHADES

What's more, Pantone has also announced "Seasonless shades" which are the colors selected by the Pantone Color Institute, that are not tied to any specific fashion season (like Spring/Summer or Autumn/Winter). Instead, they are meant to be timeless, versatile colors that work all year round.



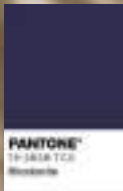
**Color Name: Coffee Bean 19-0915 TCX**  
Coffee Bean is a deeply roasted bold brown with a smoky, chocolatey and nutty appearance.

- Color System: Fashion, Home + Interiors
- Color Library: Cotton TCX
- Color Family: Orange



**Color Name: White Onyx 12-4300 TCX**  
White Onyx is a light transmitting off-white with a soft ethereal glow.

- Color System: Fashion, Home + Interiors
- Color Library: Cotton TCX
- Color Family: Neutral



**Color Name: Rhodonite 19-3838 TCX**  
A trusted blue hue, Rhodonite expresses confidence and composure.

- Color System: Fashion, Home + Interiors
- Color Library: Cotton TCX
- Color Family: Purple



**Color Name: Angora 12-0605 TCX**  
Angora is a soft beige whose message of tactility embraces a silky, fluffy feel.

- Color System: Fashion, Home + Interiors
- Color Library: Cotton TCX
- Color Family: Yellow



**Color Name: Sycamore 19-5917 TCX**  
A deep forest green rooted in the purity of the earth, Sycamore creates a mood of fortitude and elegance.

- Color System: Fashion, Home + Interiors
- Color Library: Cotton TCX
- Color Family: Green



**Color Name: Sage Green 15-0318-TCX**  
Displaying a soft muted appearance, Sage Green evokes feelings of balance and relaxation.

- Color System: Fashion, Home + Interiors
- Color Library: Cotton TCX
- Color Family: Green-Yellow

## DESIGN APPLICATION



The palette is rich, grounded, and quietly sophisticated, with a balance of warm browns, cool blues, and soft neutrals. It feels both calming and elevated, which is ideal for contemporary interiors.

---



Adds warmth and richness—great for wood accents, cabinetry, and feature walls.  
Luxurious yet cozy.

Refined tones for interiors that whisper sophistication.



# ARCHITECTURE

## THE FOLLY / TAREK SHAMMA

Cultural Architecture: Melides, Portugal

Architects & Design: Tarek Shamma

Area: 130m<sup>2</sup>

## THE FOLLY / TAREK SHAMMA

The Folly is a remarkable architectural creation envisioned by a client seeking a serene space for reflection and meditation—one without a fixed function or traditional program.

Drawing inspiration from discussions about monumental structures such as the Jantar Mantar, India's stepwells, and the Parthenon, the design captures the spirit of ancient architecture. It embodies a deep connection to history while highlighting the interplay of natural light and the four essential elements: earth, fire, wind, and water.

Even with strict planning limitations—such as restricted building footprint and height—the design team navigated every challenge with ingenuity, shaping The Folly into a refined architectural statement. Every material and construction choice was made with thoughtful intention. Concrete became the core material, offering both strength and sculptural elegance.

To further anchor the structure to its surroundings, local sand was blended into the exterior render and even mixed into the front façade's paint. This created a natural, cohesive palette that allows the building to merge effortlessly with the landscape, as though it had quietly grown from the earth itself.





## **THE FOLLY/ TAREK SHAMMA**

The primary objective of The Folly is to create a space that harmonizes seamlessly with its surroundings while offering visitors an immersive experience. Its lack of a fixed program encourages personal engagement, allowing individuals the freedom to contemplate and reflect. Thoughtfully designed openings frame stunning vistas of the landscape, inviting natural light to fill the interior and cultivating a serene, meditative atmosphere.





The primary objective of The Folly is to create a space that harmonizes seamlessly with its surroundings while offering visitors an immersive experience. Its lack of a fixed program encourages personal engagement, allowing individuals the freedom to contemplate and reflect. Thoughtfully designed openings frame stunning vistas of the landscape, inviting natural light to fill the interior and cultivating a serene, meditative atmosphere.

With meticulous attention to detail, The Folly has achieved a delicate balance between architectural innovation and a deep respect for nature. It stands as a testament to the inherent connection between human creativity and the environment, offering a sanctuary where one can connect with the elements and find solace in the beauty of the world.

## **THE FOLLY/ TAREK SHAMMA**







# INSIGNIA INTERIOR

Interior Design  
Architectural Design  
Design & Build  
Fit Out Specialist  
Project Management

---

## WEBSITE

[www.insigniainterior.com.my](http://www.insigniainterior.com.my)

## FACEBOOK

Insignia Interior

## INSTAGRAM

[insignia.interior](https://www.instagram.com/insignia.interior)

## LINKEDIN

Insignia Interior Sdn Bhd

## ADDRESS

75A, Jln Anggerik Emas 1,  
Taman Anggeirk Emas  
Skudai, 81300 Johor Bahru, Johor

## CONTACT

016-733 0710