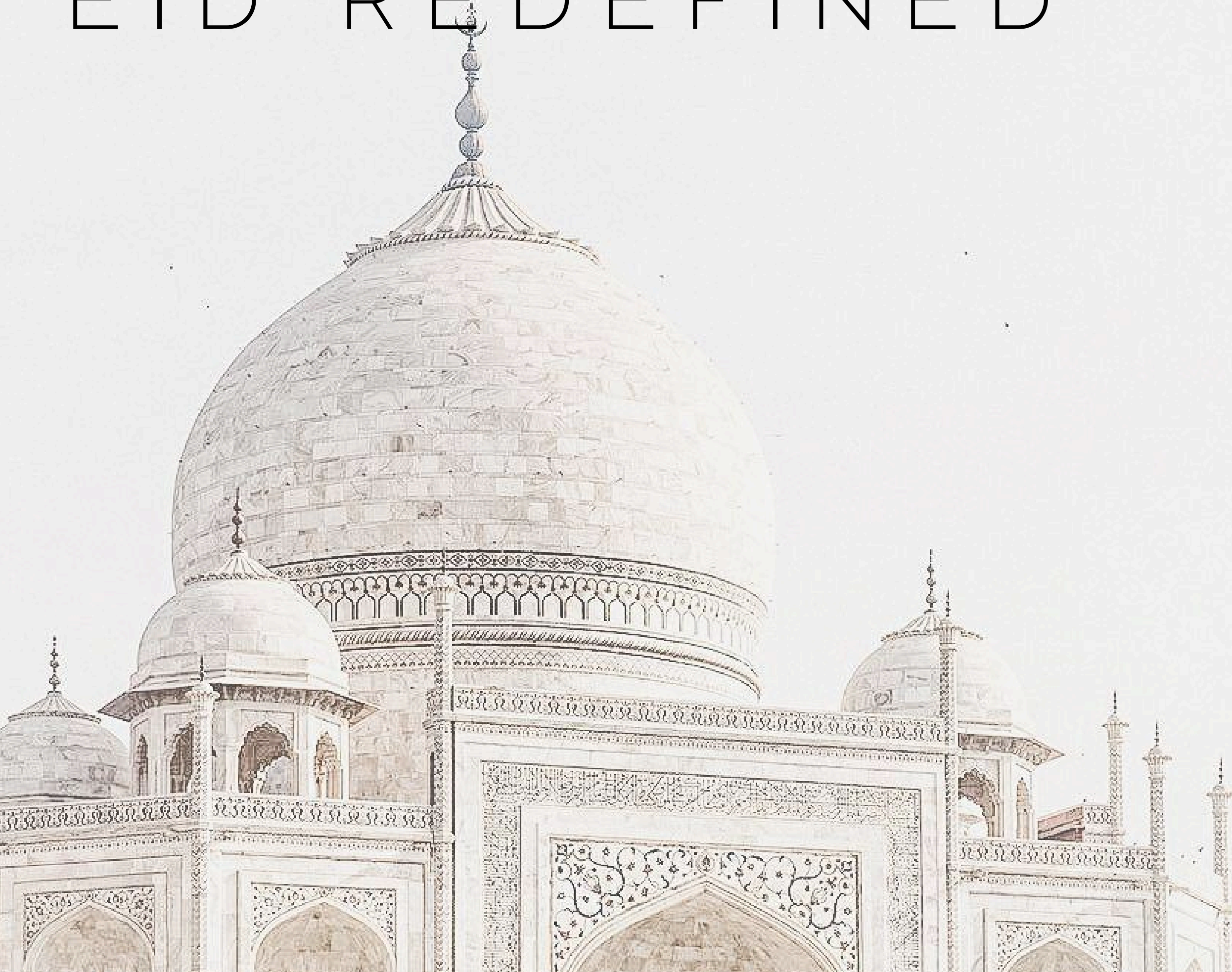


EID REDEFINED



RAYA EDITION 2026



TABLE OF CONTENT

EDITORS NOTE

PROJECT COVERAGE

TongTor Terrace House Show Unit

INS CONCEPT

Biophilic Interior : Curated Spaces Inspired by Nature

TEAM

Ramadan Iftar With Insignia Team

FESTIVE DECOR

The Art of Raya Mall Decorations in Malaysia

FURNI

Your Living Room, Raya-Ready with IKEA

TIPS

How To Select Happy House Plants

ARCHITECTURE

Mosque Wonders Around the World



Editor's Note

In this Raya season, we reflect on the spirit of togetherness, gratitude, and renewal that this festive time brings. It is a meaningful moment to reconnect with family, friends, and colleagues.

For this special Raya edition, we share highlights that celebrate the festive spirit within our community, including our completed TongTor Terrace House Show Unit and a recap of our Ramadan Iftar at Melor House with the Insignia team.

Discover Raya inspirations—from IKEA's festive living ideas and vibrant local celebrations to tips on choosing uplifting plants and the timeless beauty of mosque architecture.

Wishing you happiness, warmth, and blessings this festive season.

Selamat Hari Raya Aidilfitri, Maaf Zahir dan Batin.



TongTor Terra Heights Double Terrace Show Unit

Client: Tong Tor Development
Project Involvement: Fit Out Work





Nestled within the tranquil setting of Terra Heights by TongTor Development, this double terrace show unit is envisioned as a modern sanctuary—where simplicity meets comfort in perfect harmony. Designed with a clean and contemporary language, the home embraces a “simple modern” concept that prioritises clarity, warmth, and a sense of calm throughout every space.

The layout consists of a foyer, living room, parents’ bedroom, master bedroom, bedroom 2, and a kids’ room—thoughtfully planned to provide the perfect lifestyle and living space for families.



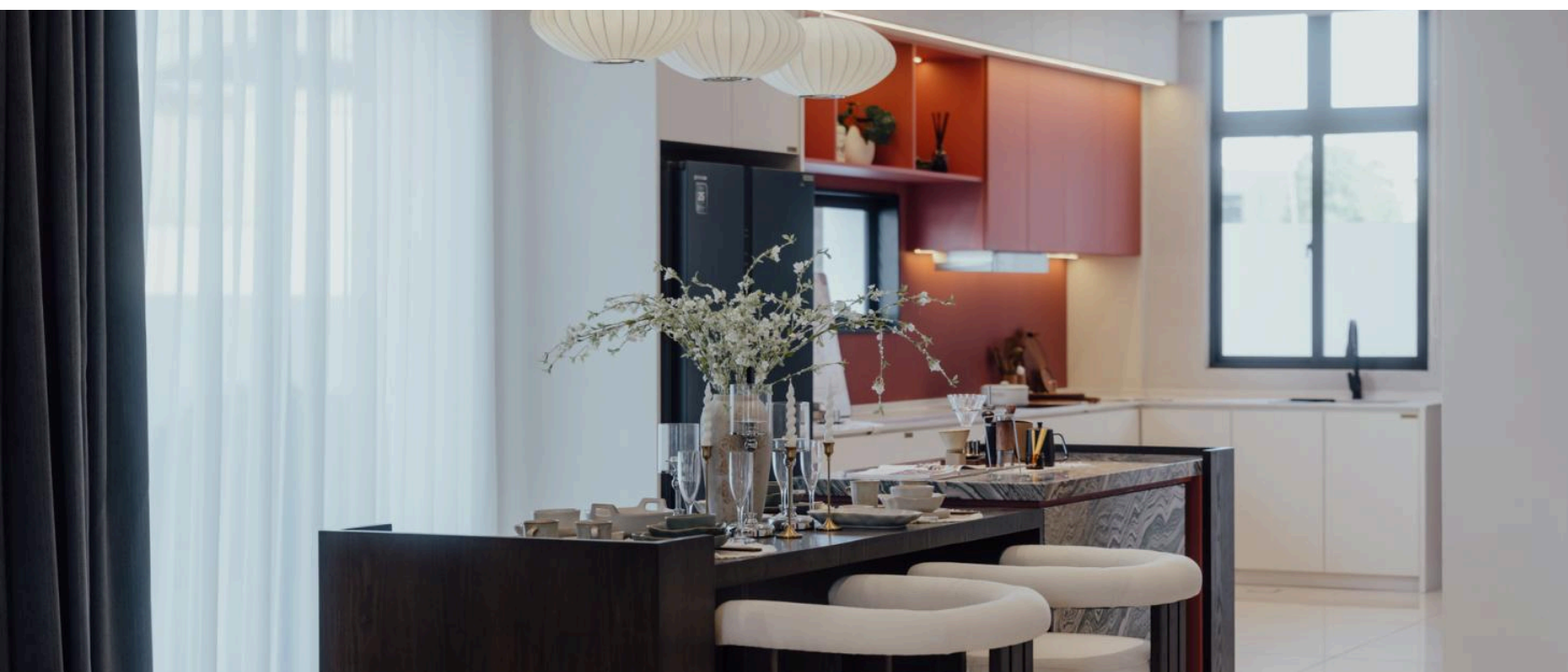
THE WELCOMING PERLUDE

Adorned with a built-in shelving feature, it serves as both a functional and aesthetic element—offering a curated display of decorative items such as vases, books, and subtle art pieces.

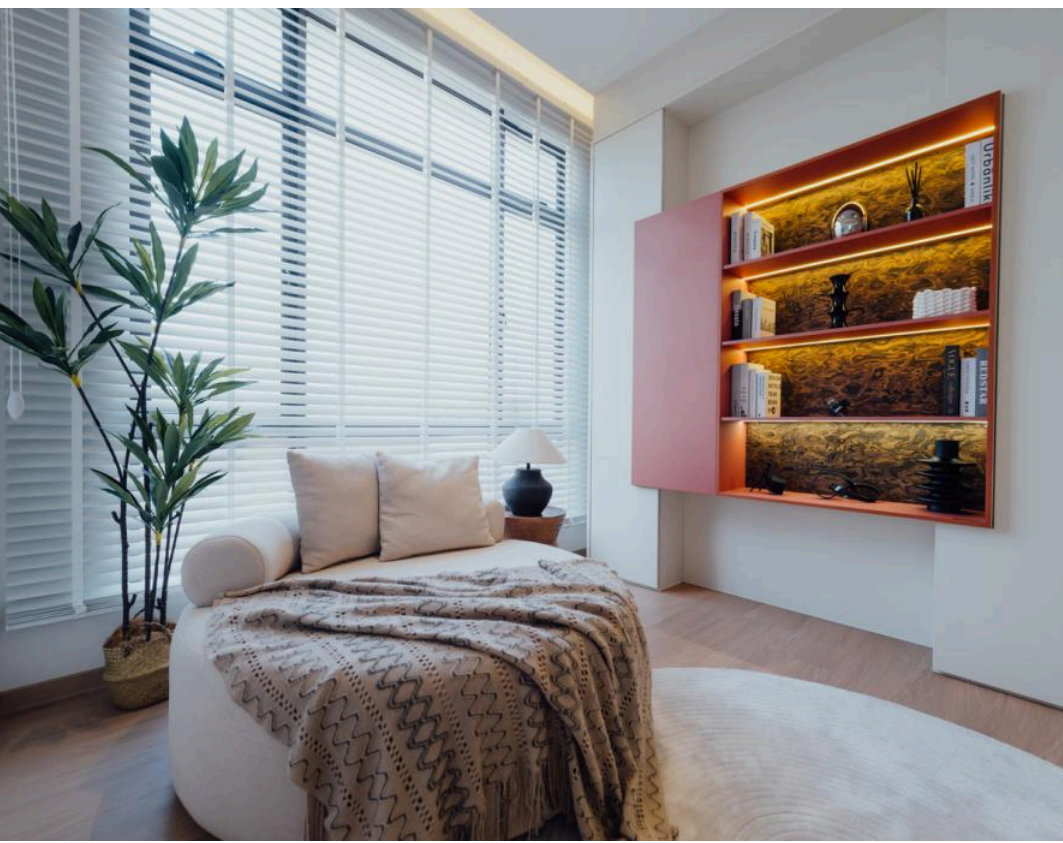
LIVING ROOM

Defined by a timeless black-and-white palette, the design emphasises clean lines, balanced proportions, and a sense of visual clarity.





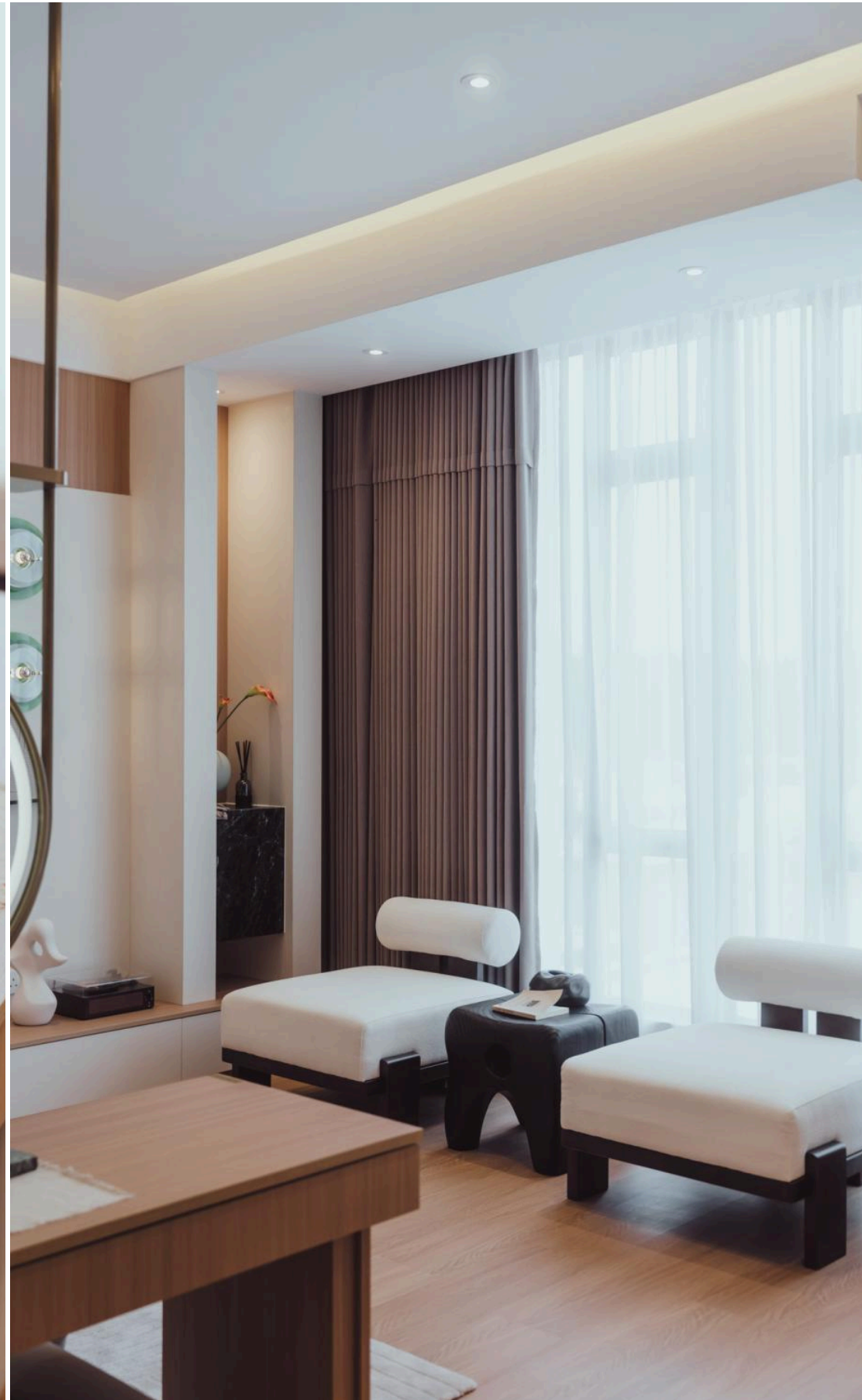
KITCHEN & DINING



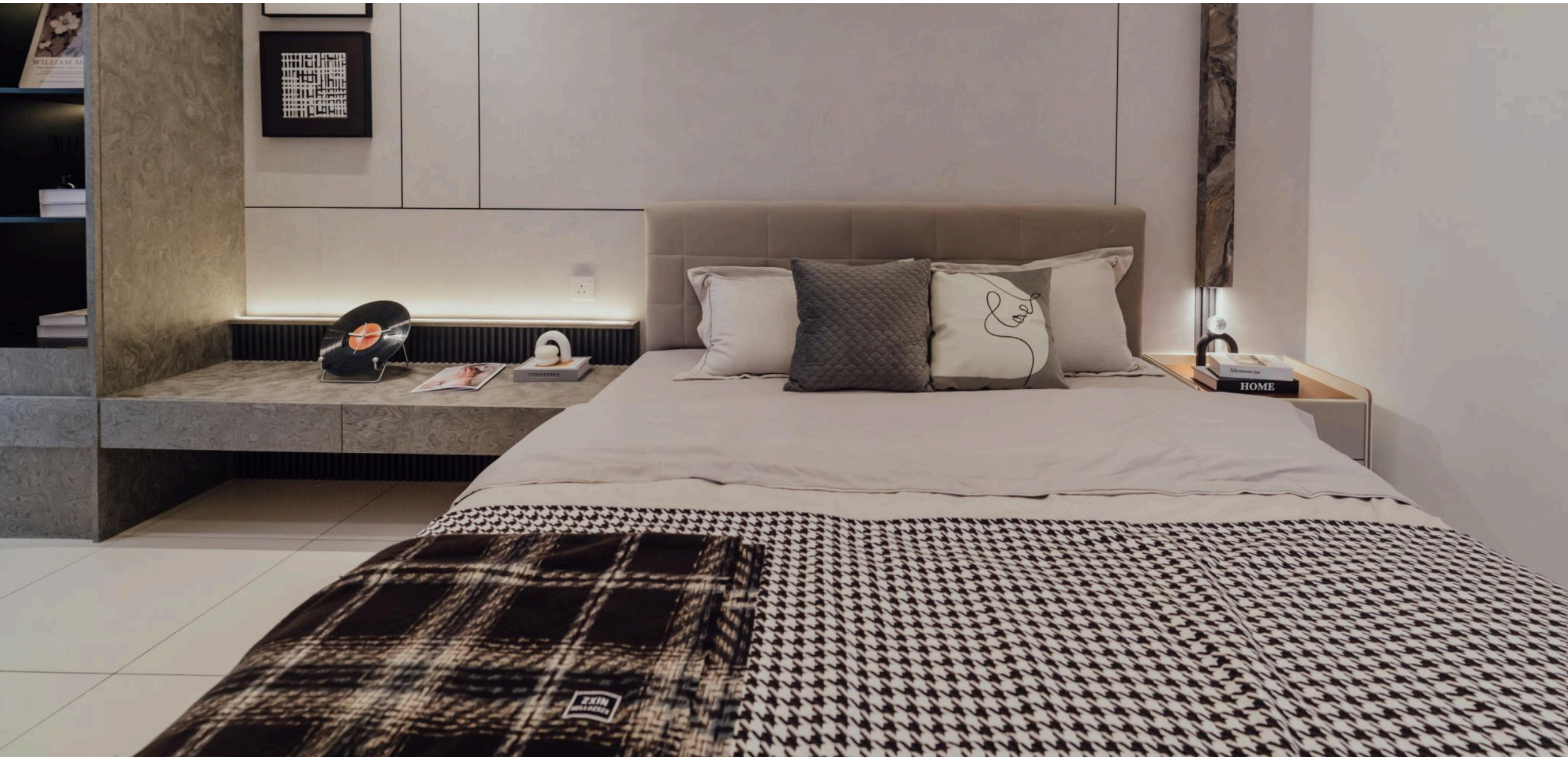
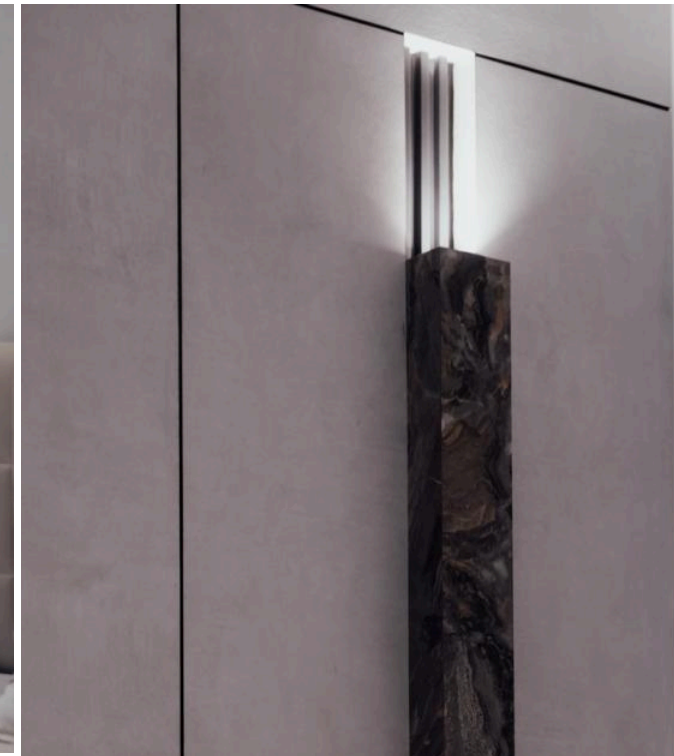
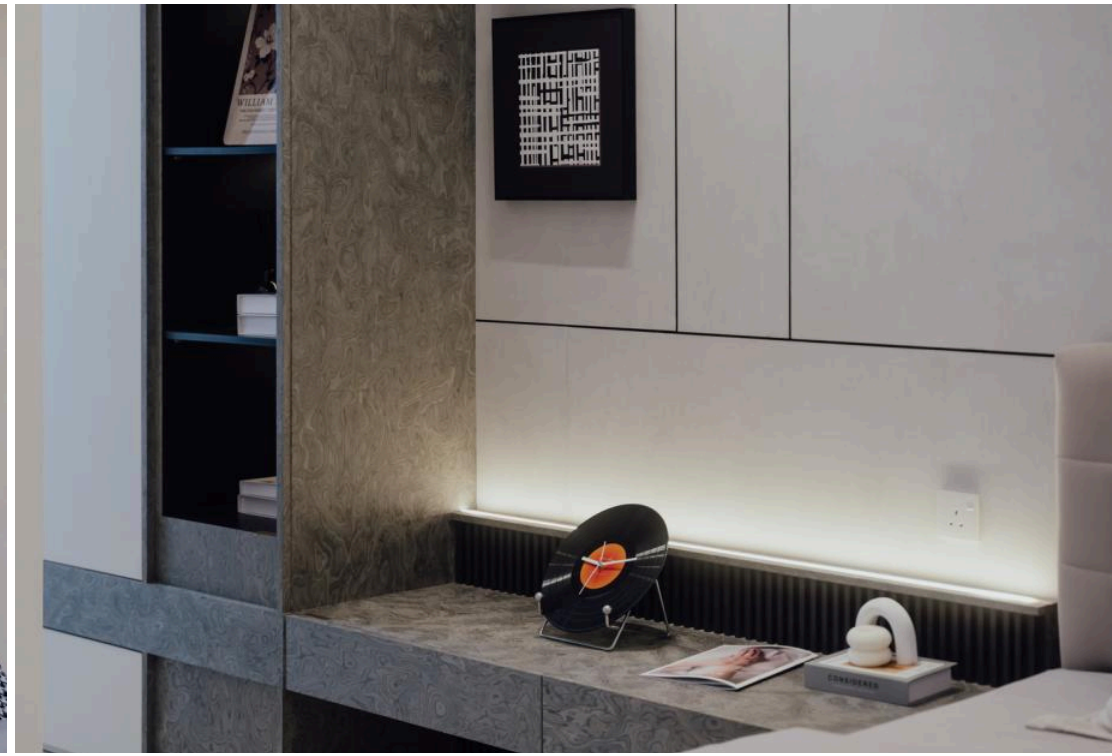
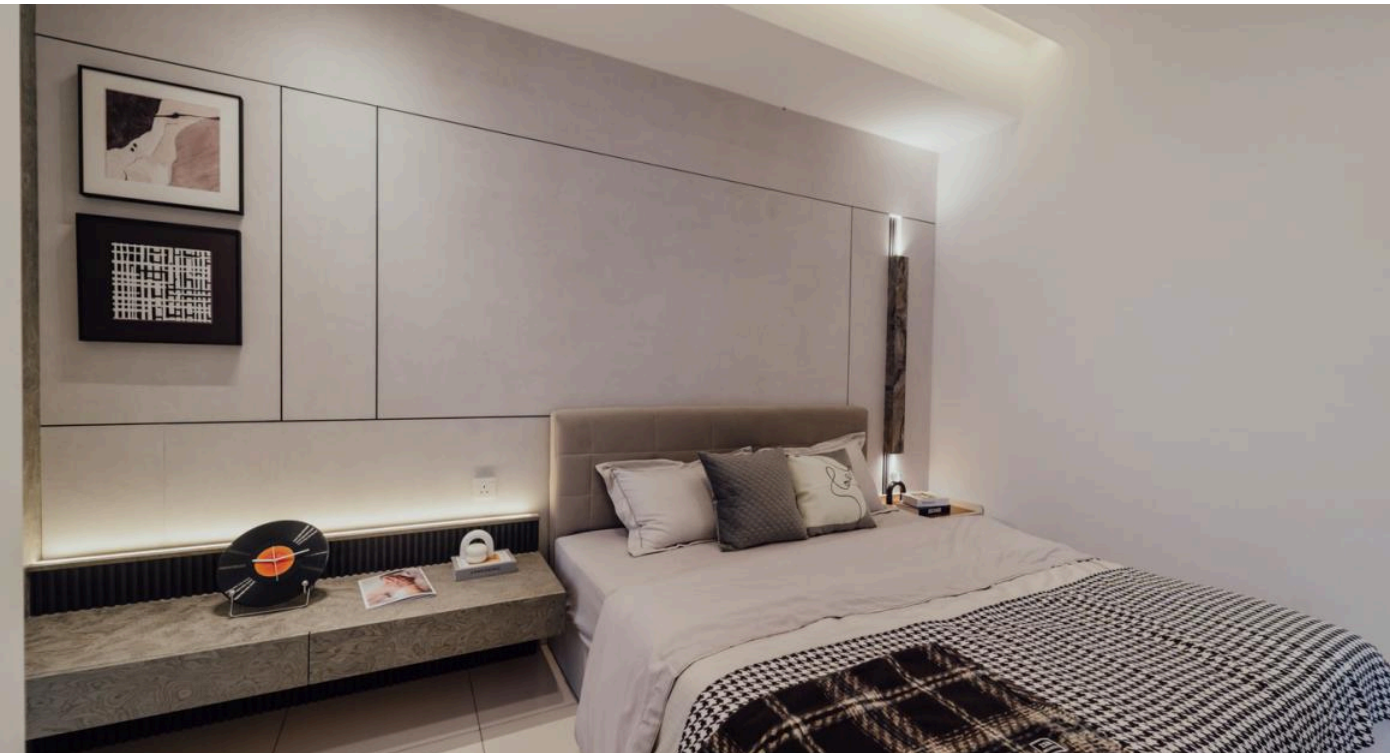


MASTER BEDROOM

MASTER BEDROOM



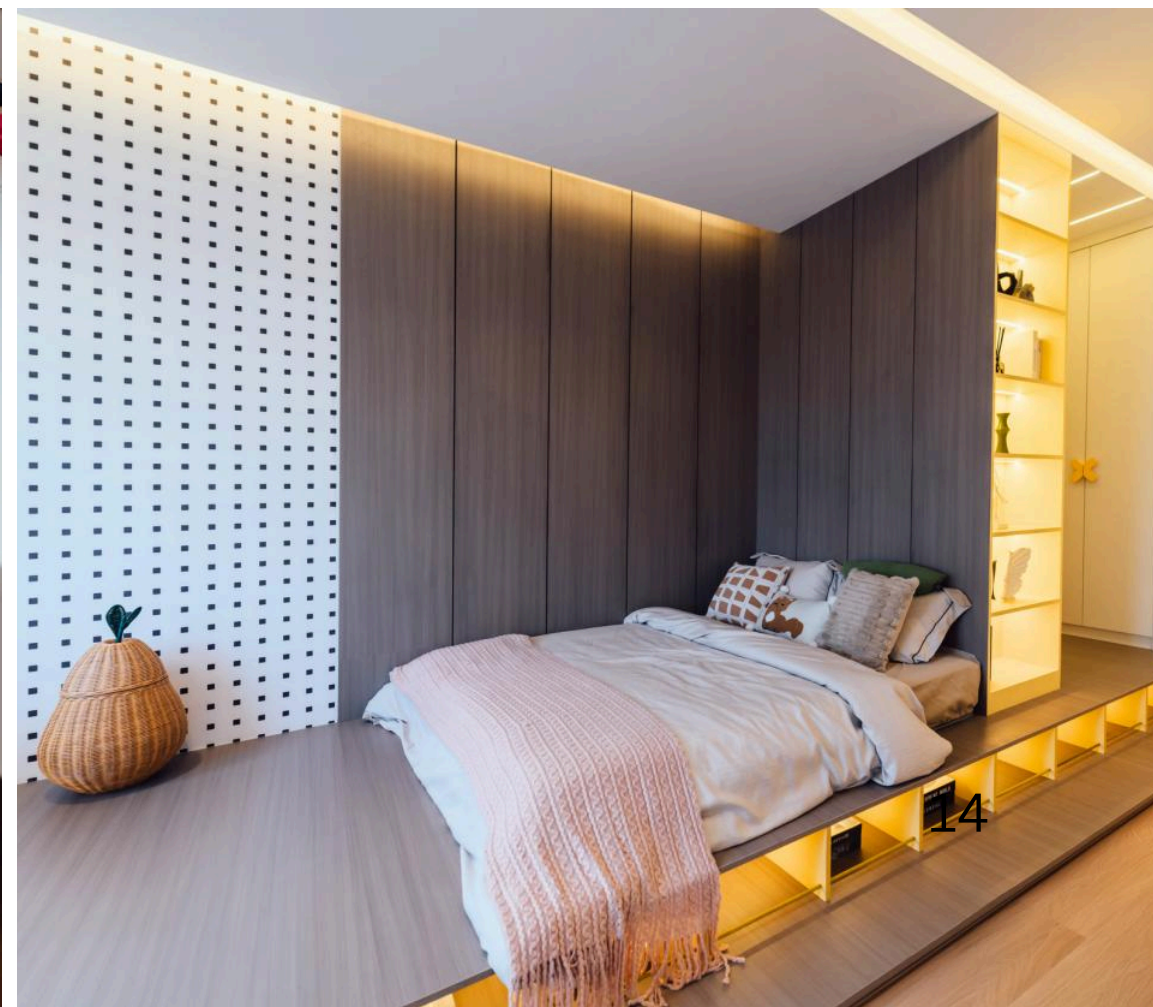
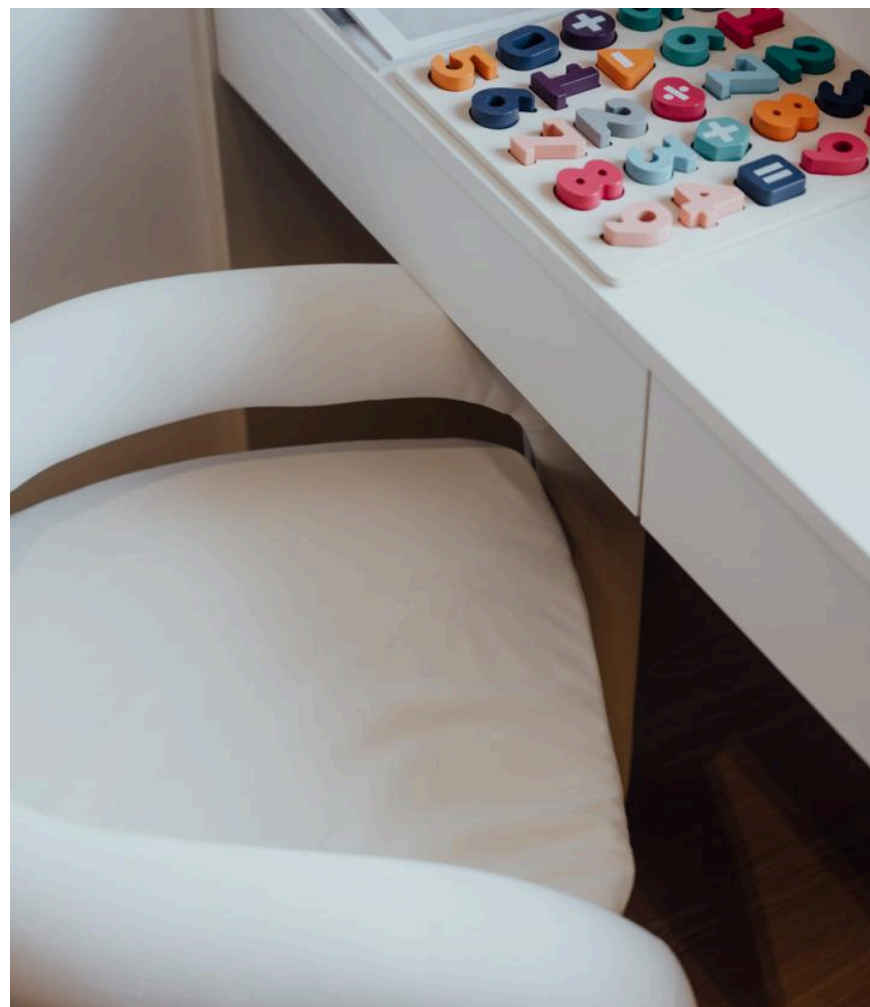
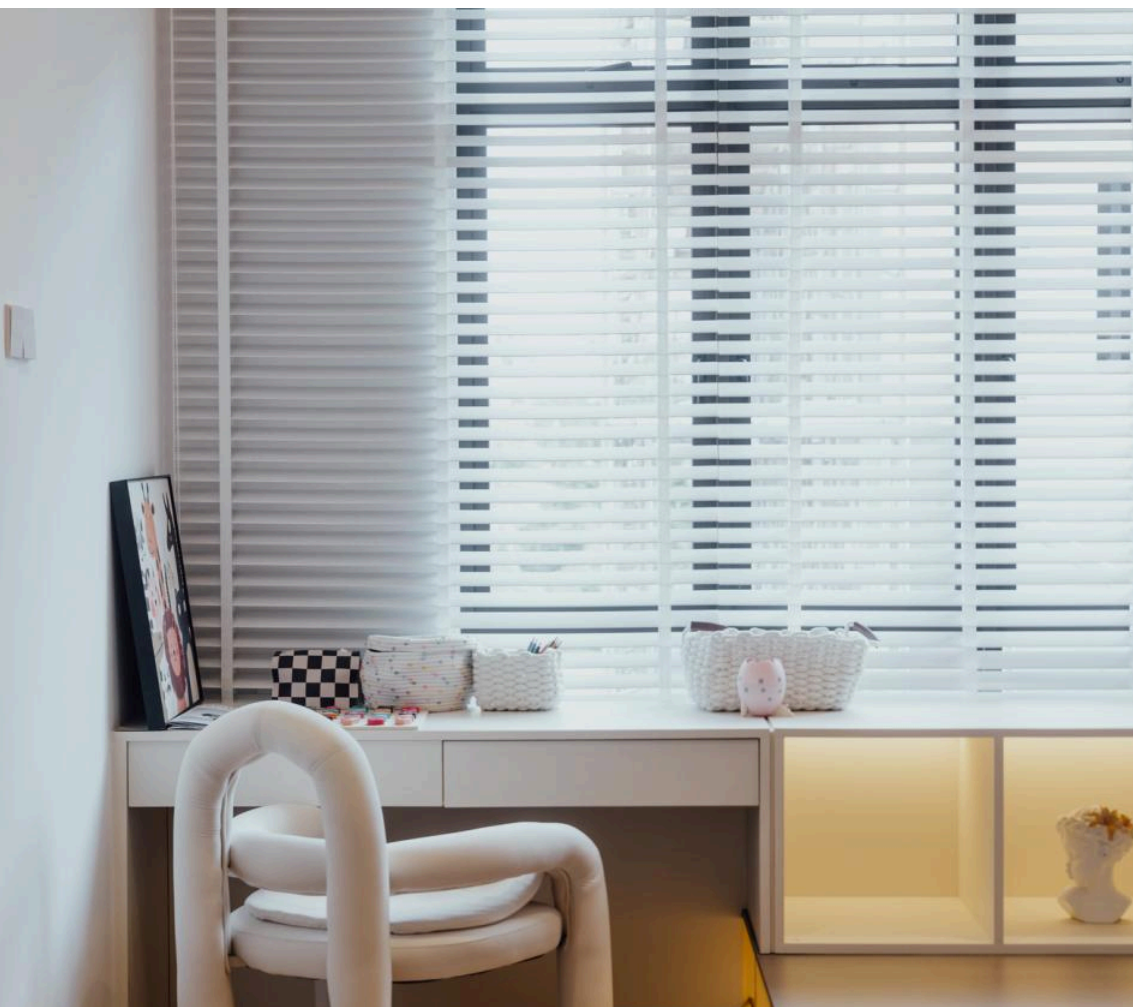
GUEST ROOM



BEDROOM 2



KIDS ROOM



INS CONCEPT
BIOPHILIC INTERIOR

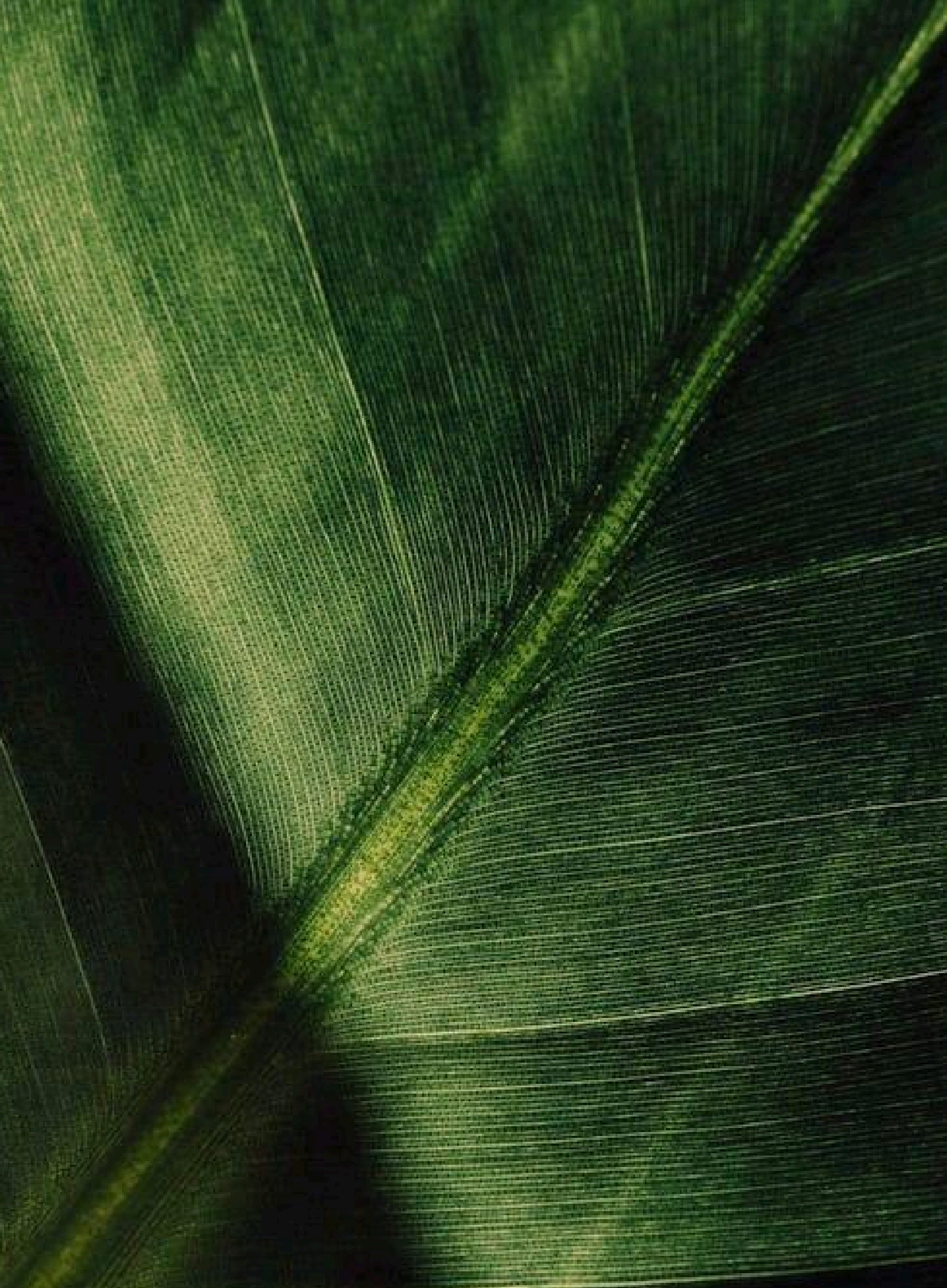


木
林


BIOPHILIC INTERIOR

Curated spaces inspired by nature. Designed to bring harmony, warmth, and a sense of calm into everyday living.

moodboard.⁶



Biophilic Interior Design is a design approach that integrates natural elements into interior spaces to create a stronger connection between humans and nature. Rooted in the concept of biophilia—the idea that humans have an innate affinity for the natural world—this design philosophy enhances physical and emotional well-being by mimicking nature's patterns, materials and features within built environment

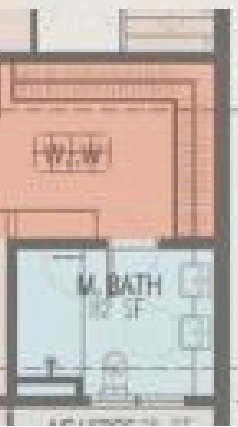


This approach seamlessly integrates natural elements into the architectural and interior language, creating a home that feels calm, restorative, and deeply connected to its surroundings. Through the thoughtful use of natural materials, organic textures, and a soothing earthy palette, the design evokes a sense of warmth and timeless elegance. Daylight is maximised to enhance spatial quality, while greenery is carefully incorporated to bring life, freshness, and a continuous dialogue between indoor and outdoor spaces.









TEAM

Ramadan Iftar With Insignia Team

Insignia's Ramadan Iftar at Melor House, was a meaningful evening filled with warmth, gratitude and togetherness. Set in a cozy and inviting ambience, the team gathered to break fast and reflect on the spirit of Ramadan. It was a chance to slow down from the daily hustle, reconnect with one another and appreciate the shared journey as a team.



Me|or House

Over a delightful spread of traditional dishes, everyone gathered to break fast together, catch up and just enjoy the moment. We even got to watch beautiful fireworks and play bunga api together, which made the night feel extra festive and memorable. Everyone is happy to spend time together outside of work and appreciating the little moments during Ramadan.



FESTIVE DECOR

Shopping Mall Raya Decor in Malaysia





SURIA KLCC

The Centre Court and Esplanade KLCC are transformed into a bougainvillea garden with traditional Malay wakaf structures, featuring 1,710 metres of hand-stamped batik by Sofia Iman woven throughout the space.



PAVILION KUALA LUMPUR

Pavilion Kuala Lumpur's "Journey to Tradisi" celebrates Ramadan and Aidilfitri with installations inspired by the glow of panjut pelita, featuring contemporary batik works by Farah Mohan.



THE EXCHANGE TRX

The Exchange TRX's "Rimbun Raya" showcases traditional Malay architecture with elegant arches, geometric motifs, and modern craftsmanship, alongside scenic photo spots and curated beauty showcases.



PAVILION DAMANSARA HEIGHTS

Pavilion Damansara Heights' "Aidilfitri in Bloom" blends Raya charm with floral and crescent moon motifs, alongside curated brand pop-ups and designer showcases by the Malaysia Bumiputra Designer Association.



ALAMANDA SHOPPING CENTRE

Alamanda Shopping Centre presents a Bougainvillea Garden anchored by a traditional Malay hut, featuring classic wooden arches and tiered roofing. The setup evokes a nostalgic kampung ambiance, inviting visitors to stroll through a vibrant floral tunnel that comes alive with lights at night.



LALAPORT BUKIT BINTANG

LaLaport Bukit Bintang City Centre's "Deruan Kasih Aidilfitri" transforms the mall into a serene coastal village, inspired by the warmth and nostalgia of a seaside Raya. A charming wooden pier, swaying coconut trees, and soft natural textures create an immersive setting that beautifully celebrates Malaysian traditions.



FURNI

Your Living Room

Raya Ready with **IKEA**



This Raya season, let your living room radiate warmth, tradition, and modern elegance with IKEA's Raya-inspired furniture. From sleek, versatile pieces to timeless designs, IKEA helps you create a living room that's perfect for welcoming loved ones and celebrating in style. Celebrate the joy of togetherness with a living room that shines as brightly as the season!



GOKVÄLLÅ Cushion cover, beige/white

Details

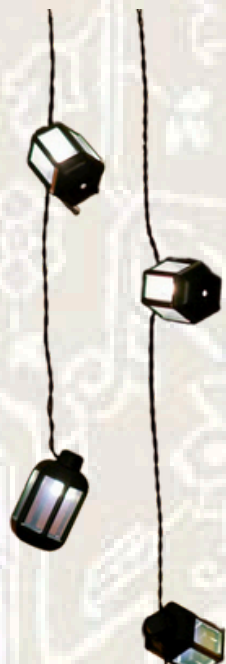
- Woven from soft cotton, giving the fabric a nice feel.
- Geometric pattern like a mosaic and creates a festive look.
- Easy to match with other textiles in the GOKVÄLLÅ collection.



GOKVÄLLÅ Lantern for tealight, in/outdoor

Details

- Create decorative shadows that make your home feel cosy and warm
- Perfect size to place on the table.
- Goes nicely with other items in the GOKVÄLLÅ collection



GOKVÄLLÅ LED lighting chain with 12 lights

Details

- Create a cosy atmosphere in your living room
- Can be hang on the ceiling, along the balcony rail or on your table
- Easy to place anywhere as it is battery operated



STOCKHOLM Side table, oak veneer dark brown

Details

- Has a natural yet elegant expression, with every detail crafted with care.
- The grain on the table top enhances the surface texture.
- Beautiful as a solitaire or paired with other furniture



SANDARED
Pouffe, beige, 45 cm

Details

- Soft, knitted covers in different colours and patterns.
- The cover is easy-care since it can be removed and machine washed.
- Anti-slip on the underside makes the pouffes stand firmly



KONSTFULL
Vase, Clear/Patterned Glass

Details

- Semi-transparent glass vase with texture, shimmering surface
- Rings at the bottom hold the stems at the desired angle
- Goes nicely with something like long and elegant roses



VOLLERSLEV
Rug, high pile, White

Details

- Woven with varying yarn thicknesses to create a soft texture
- Cosy to sit, walk, play or lie on.
- Soft under your feet, creates a cosy ambience and helps to dampen sound.



DYTÅG
Throw, grey-green

Details

- Creates a relaxed, comfy look for your living room.
- Made of 87% linen, a hard-wearing natural material
- Gets softer and more beautiful with each wash.



TIPS

How To Select Happy Houseplants

Once you find the perfect spot for a houseplant in your home, it's time to go shopping! So how do you decide where and when to purchase your greenery?

Where are you purchasing from?

Choose reliable sources like garden centres or nurseries for expert advice, or try farmers' markets and supermarkets for casual options. If you have a specific plant in mind, bring a photo and ask the staff. Always check the plant's condition and avoid those with dry or damaged leaves.

What to look out for?

Inspect the plant carefully before buying to avoid bringing pests home. Check the soil, stems, and leaf undersides, and watch for fine webbing (spider mites) or tiny flying insects like fungus gnats.

Asking for advice

Most plants will come with a label with some identifying information and care tips. If you find a knowledgeable staff member at the shop, ask them for any other advice. Take note of the lighting the plant had while on display, keeping in mind that, given space restrictions across different shops, it may not have been in the ideal location. If you have to rely on the label alone, don't trust it a hundred percent.



Choosing The Right Plants Matters.

- **Assess your space with lighting**
Low-light plants: Spider Plant, Peace Lily
Bright, direct light plants: Fiddle Leaf Fig, Succulents
- **Matching plants to your interior design**
Minimalist homes: Monstera, Rubber Plant
Boho chic: Hanging plants like String of Pearls
- **Consider your space**
Small space plants: Aloe Vera, Pothos
Large space plants: Bird of Paradise, Kentia Palm
- **Consider your lifestyle and maintenance**
Low-maintenance plants: ZZ Plant, Snake Plant
High-maintenance plants: Orchids, Bonsai
Browse our easy-care plants.



Mosque Wonders Around The World

Designing a mosque presents unique challenges, as its strict and detailed requirements—established centuries ago—remain essential in shaping spaces of worship. As a result, mosque architecture is often associated with traditional forms and intricate details.

Today, balancing religious principles with contemporary design is increasingly complex, requiring a sensitive and thoughtful approach. However, some architects have successfully reinterpreted tradition, integrating heritage with modern design to create spaces that are both timeless and relevant.



Jami At-Taqwa Mosque Cibinong/ Ismail Solehudin Architecture

A visually captivating mosque that offers a rich, immersive experience, reflecting the spirit of the community and the devotion of its benefactors.

An arcade with landscaped buffers protects the prayer hall from noise and dust, while a canopy extends the folding architectural language, creating a unique spatial journey.

Defined by folding roofs and pleated walls, the design enhances warmth, natural light, and a strong identity—expressing prayer, hope, and a sense of closeness to God.



Masjid Permata Qolbu / MAHASTUDIO

Located in West Jakarta, Masjid Permata Qolbu by MAHASTUDIO reinterprets traditional mosque architecture through a minimalist and symbolic approach. Designed as a community landmark, it expresses spirituality in a contemporary way.

Its slanted white columns, inspired by hands raised in prayer, create a strong visual identity, while traditional elements like the dome and minaret are simplified into pure forms.

Soft natural light enhances the serene atmosphere, and its open design strengthens its role as both a place of worship and a community hub—showing how modern architecture can embody spiritual meaning through light, form, and abstraction.

Masjid Permata Qolbu / MAHASTUDIO

Henning Larsen Architects reimagines the modern mosque by engaging younger generations while respecting tradition. Their 2015 proposal in Copenhagen features a sculptural cluster of domes, blending Nordic and Islamic influences.

Though composed of multiple domes, the interior reads as a unified space, centred around a large courtyard that connects the mosque and community functions. A direct passage invites visitors to explore facilities such as a café, bazaar, and classrooms.

Inspired by Islamic geometry, the façade filters daylight through varied openings, while its transparent ground level enhances openness, accessibility, and community engagement.



Mosque of Reflection/ Waiwai

The Mosque of Reflection in Dubai reimagines the role of the mosque within the urban fabric, drawing from traditional Arabian typologies to foster community engagement alongside its sacred function. Retaining the original structure, the mosque is transformed with a reflective pastel green façade while preserving its internal prayer layout.

A defining addition is the circular 'riwaq', which gently wraps around the mosque—departing from conventional linear forms. Composed of wide arches and white perforated metal, it invites movement from all directions while filtering natural light into the space. This porous, light-filled arcade softens boundaries between interior and exterior, creating a sense of openness and strengthening the connection between the mosque and the city.





Interior Design Project Management **Architectural Design** Fit Out Specialist **Design & Build**

Website: www.insigniainterior.com.my

Linkedin: Insignia Interior Sdn Bhd

Facebook: Insignia Interior

Instagram: insignia.interior

Contact: 016 733 0710