

INSIGNIA CONCEPT

CONTENTS .

EDITOR'S NOTE

PROJECT COVERAGE-

Path To Effortless Elegance: Taman Impian Emas Superlink
Double Storey Terrace Show Unit at Iconia Garden Residence Zone 10D1

INS CONCEPT

Redefining Workspace- Office Design for the Hybrid Work Era by Insignia Interior

TEAM

Meet Fan, The new face of Insignia Interior

INTERIOR

Batik Reimagined- Modern & Cultural Twist in Interior Design

RAYA READY

Modern Raya Celebration

FURNI

Give Your Living Room A Raya Glow Up with IKEA

HAPPENINGS

The Raya & Lifestyle Fest

ARCHITECTURE

Castle Exhibition Space/ Amelia Tavella



EDITOR'S NOTE .

This Raya, we're unveiling a treasure trove of inspiration to make your celebrations both refined and unforgettable. Embrace the spirit of Raya with our thoughtfully curated selections:

Take an exclusive look at our Insignia project and explore innovative workspace solutions designed to meet the demands of the modern hybrid work era. Discover how thoughtful design can transform not just spaces, but the way we live, work, and celebrate.

Embark on a journey of Raya magic as we showcase IKEA's furniture collection, perfect for elevating festive vibes in your living room. Learn how the cultural essence of Batik beautifully integrates into contemporary interior design. Stay inspired with insights into modern Raya celebrations and mark your calendar with upcoming Raya-themed lifestyle events.

As the moon rises and the festivities begin, may your Raya be filled with elegance, joy, and the warmth of togetherness.

Have an Eid Elegance Raya season.



INSIGNIA CONCEPT

Insignia Interior

PROJECT COVERAGE .

PATH TO EFFORTLESS ELEGANCE: TAMAN IMPIAN EMAS SUPERLINK DOUBLE STOREY TERRACE SHOW UNIT AT ICONIA GARDEN RESIDENCE ZONE 10D1



CLIENT: GUNUNG IMPIAN DEVELOPMENT SDN BHD
PROJECT INVOLVEMENT : DESIGN & BUILD
DESIGN INSPIRATION: MID-LUXURY MODERNISM

We're super excited to introduce the Taman Impian Emas Superlink Double Storey Terrace Show Unit at Iconia Garden Residence Zone 10D1, designed with a mid-luxury modernism concept that's all about elegance meets everyday living. Think clean lines, cozy textures, and a touch of sophistication—without feeling stuffy or over-the-top. This is modern living made approachable, stylish, and totally livable.

WHY THIS CONCEPT?

We get it—people want homes that feel luxurious but also practical. That's why we've created a space that's timeless, functional, and oh-so-inviting. It's perfect for anyone who loves the sleekness of modern design but still wants their home to feel warm and welcoming. Whether you're a young professional, a growing family, or someone who just appreciates a luxurious and livable design, this design is for you.



DESIGN ELEMENTS

In order to strike a balance between high-end luxury, accessible, practical design, creating spaces that feel both refined and livable, the design embraces the elements to achieve the desired outcomes:

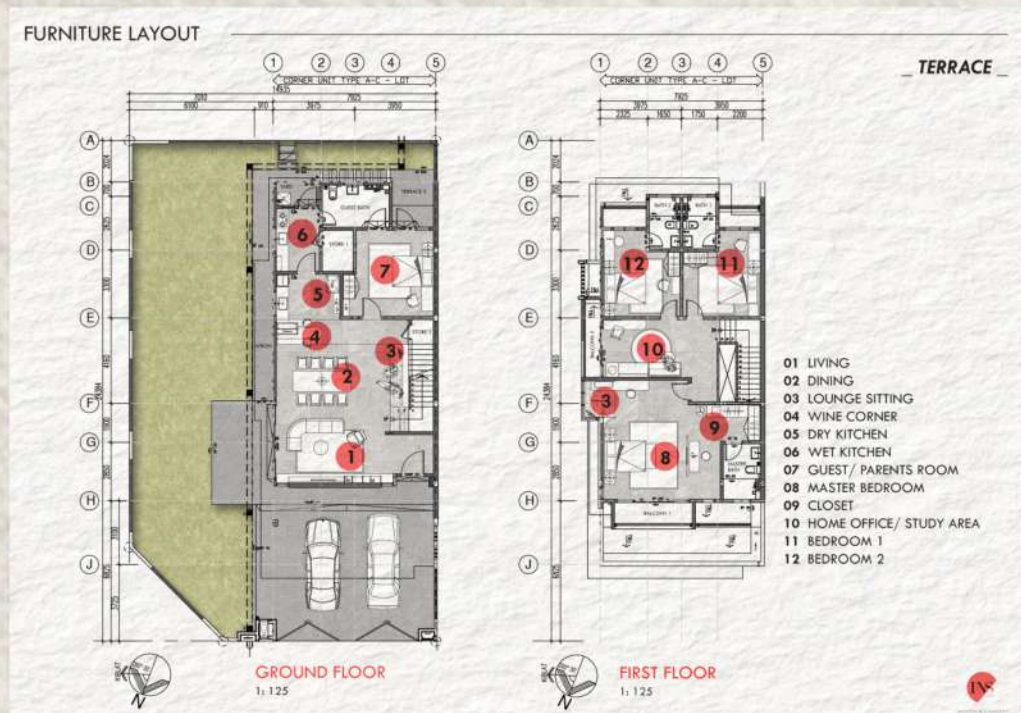
Natural Materials With Matte Surface: High-quality materials like quartz, marble, laminate, and wood are used extensively, contributing to the understated elegance of the design.

Luxury in the Details: High-end finishes, custom furniture, and thoughtful details through the selection to convey a sense of luxury without being ostentatious.

Color Palette- Luxurious Neutral Tones with shades of white, beige, gray, black and taupe dominating each space.

FURNITURE LAYOUT

The furniture layout is a cohesive and functional furniture layout that maximizes comfort and utility for the family segment, includes a common area, 4 bedrooms, a lounge area with wine corner and home office.



DESIGN OUTCOME

LIVING ROOM

The focal point of the room is a striking accent wall adorned with marble laminate and surrounded with rich wood panelling, offering a harmonious contrast to the sleek, polished surface.

A plush sectional sofa, upholstered in neutral tones, is arranged to face the marble wall, where a mounted flat-screen TV provides entertainment. A low-profile coffee table complements the overall aesthetic and serves as a central gathering point.



Decorative elements such as potted plants, art pieces, and carefully curated accessories bring life and personality to the room, complemented by a soft glow of ambience light to enhance the ambience.



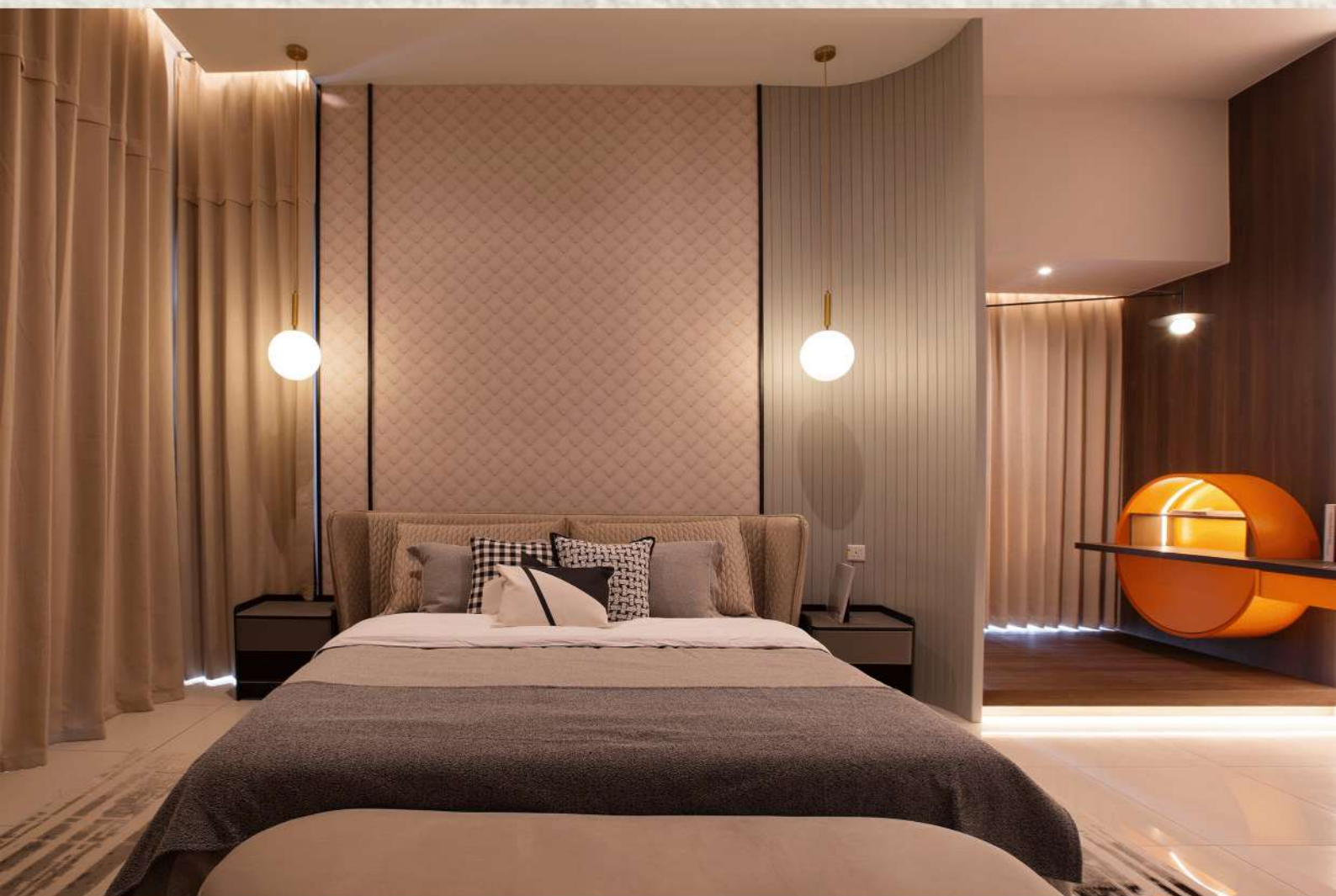
LOUNGE AREA & WINE CORNER

The lounge area is a perfect blend of comfort and sophistication, designed to be a relaxing retreat. Next to the lounge area is a dedicated wine corner that adds a touch of luxury and convenience, and features a stylish wine rack that holds an assortment of fine wine.



DRESSING NOOK & VANITY CORNER (MASTER BEDROOM)

Experience the ultimate in luxury and organization with this elegantly designed walk-in wardrobe, with an abundance of storage solutions tailored to accommodate the entire wardrobe.



BEDROOMS

The entire layout consists of 4 bedrooms, including a master bedroom, a guest room or parents' room, and 2 normal bedrooms catered for a family segment. Each bedroom is uniquely designed with a distinct style, offering a diverse and personalized living experience.





HOME OFFICE/ STUDY ZONE

A versatile zone that seamlessly adapts to your need, features a cozy design with working table for casual working mode, and a spacious space with ample working space that caters both academic and professional pursuits.



INS CONCEPT .

Redefining Workspace: Office Design For The Hybrid Work Era by Insignia Interior:

The Covid-19 pandemic has extended our working environment to a hybrid mode, where people now embrace a blend of working from home (WFH) and physical office presence. In addition, some roles do not require constant office attendance, making hot-desking an optimal solution for them.

Let's explore the work settings we believe are best suited for the contemporary working model of this generation, showcasing the new concepts, ideas, and designs proposed by Insignia.

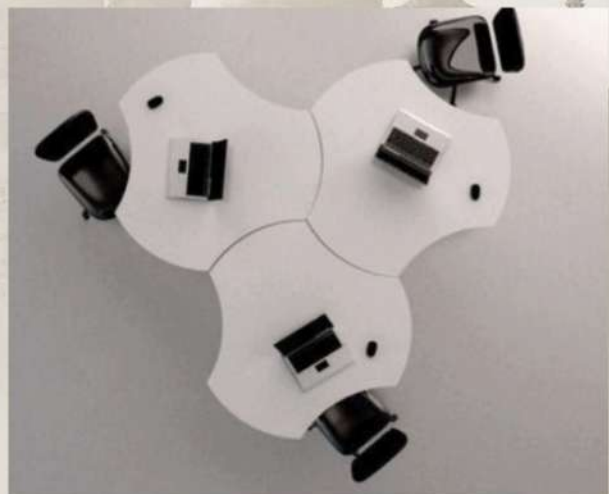
ARRANGEMENT- UNITE, EXCEL, REWIND

Modern office is all about flexibility & adaptability. In today's office environment, there could be a variety of workstation arrangements, allowing for seat shuffling, orderly configurations, or circular setups to accommodate different settings and needs.



ADJUSTABLE STANDING DESK

Adjustable standing desks have become an essential feature of modern workspaces, offering flexibility and promoting better health. These versatile desks allow users to easily switch between sitting and standing positions, reducing the risks associated with prolonged sitting, such as back pain and poor posture.



OFFICE DESK SET-UP

To perfectly complement the arrangement, consider using these office desk set-up:



PERSONAL WORKSTATION

The common setting in the office, it was developed for progressive organizations whose executives, managers and other leaders seek an updated alternative to conventional office furniture.



FOLDABLE TABLE

Versatile. Create the perfect conference or training space with included linking brackets that connect multiple tables together. Flip-top design and roll-and-lock casters make it easy to move, store and lock in place.

HOT DESK

A flexible workspace arrangement where employees do not have assigned desks. Instead, they use any available desk on a first-come, first-served basis. This setup encourages collaboration, reduces unused office space, and adapts to the needs of a dynamic workforce. It's particularly beneficial for roles with varying in-office schedules, promoting efficient use of resources.

BEANBAGS

Beanbags in an office arrangement offer a relaxed and comfortable seating option, perfect for creating informal and creative spaces. They are versatile and can be easily moved around, making them ideal for break areas, casual meetings, team building or brainstorming sessions.

PRIVACY- TELEPOD

To embrace the hybrid working concept, a private tele pod or shared tele pod would be the best idea. The enclosed space offers a quiet, distraction-free environment, perfect for making calls, conducting virtual meetings, or diving into deep work. The pod is equipped with soundproof walls to ensure privacy and reduce noise disruptions, allowing you to concentrate fully on your tasks. They also include other technical features to enhance the user's experience.



SMART TECHNOLOGY INTEGRATION

Technology serves as the backbone of a successful hybrid workplace. It provides the means for employees to collaborate, communicate and perform their work effectively from any location.

They also offer convenience, efficiency, and customization, often enhancing everyday tasks and activities. Here are some example:



SMART GLASS

Also known as switchable glass, is a type of glass that can change its transparency or opacity with the application of an electric current. This innovative technology is increasingly being used in modern office designs for its versatility and functionality.

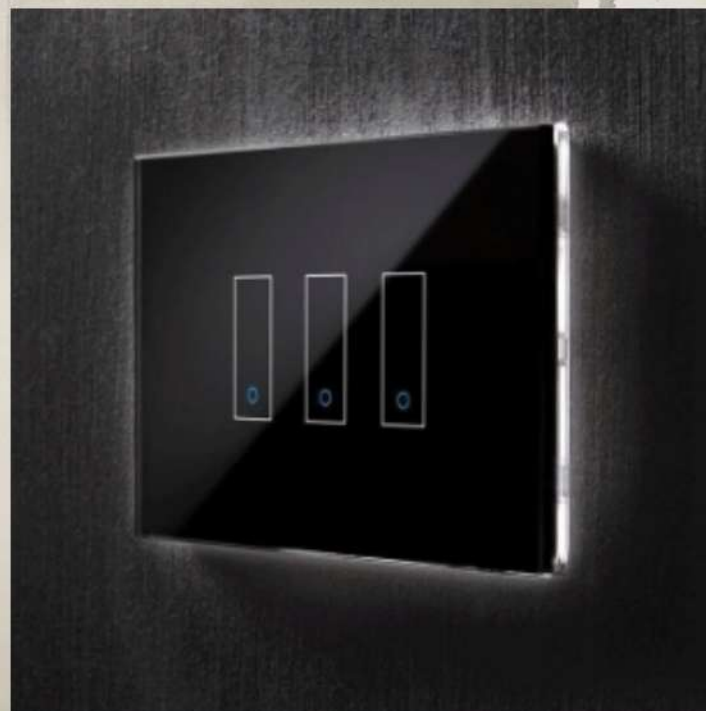
SMART LOCK



SMART BOARD



SMART LIGHTING



AND..THE DESIGNER'S PICK

POP-UP SOCKET

Pop up power receptacles that disappear in your granite island meeting electrical code, with multiple power outlets and USB ports, providing convenient access to power for various devices.



OFFICE BIKE

In a hybrid work office, an office bike promotes physical activity, boosts energy, and supports overall well-being, enhancing productivity and employee health.



ERGONOMIC CHAIR

An ergonomic chair is specifically designed to provide optimal support and comfort, promoting good posture and reducing the risk of strain or injury during prolonged sitting.





TAKE A BREAK! LEISURE SPACE

Leisure spaces or gaming zones contribute to a healthier, happier, and more dynamic work environment, making them an excellent addition to hybrid work settings. It is designed to provide employees with areas to relax, unwind, and recharge, contributing to overall well-being and productivity. Featuring:

- Comfortable Seating- beanbags, soft couch, lounge chairs,
- Board Games & Gaming Consoles
- Refreshment Zone
- Quiet Zone
- Vibrant and Energetic Design

TEAM .

Meet Fan, The new face of Insignia Interior

We're thrilled to introduce our new teammate, Fan, who recently joined our design team! Let's take this opportunity to learn more about him and get to know him better as we embark on this exciting journey together. 🌟

We look forward to the collaboration ahead and the fresh, inspiring ideas he'll bring to the team. Welcome aboard, Fan! 😊



1) Can you tell us a bit about your background and what inspired you to pursue a career in interior design?

Since childhood, I have loved drawing—starting with anime cartoons. Later, my passion shifted towards sketching buildings, which inspired me to pursue studies in interior design. What truly inspires me is the beauty of architecture and interiors in breathtaking buildings.

2) How would you describe your design style or philosophy in three words?

Exposed, Minimal & Balanced



3) What is your favourite part of the design process? and Why?

My favorite part of the entire process is witnessing the final outcome—seeing the design come to life and how it transforms spaces into something truly remarkable. What brings me the most joy is knowing that this transformation doesn't just beautify the environment, but also enhances the way people live, work, and experience their daily lives.

4) What is your favourite design concept & why?

"I love Japandi for its natural and calm aesthetic, which resonates deeply with me. The use of natural materials, combined with a focus on simplicity and comfort, creates an atmosphere of understated elegance. Japandi reminds me that 'less is more,' and that thoughtful minimalism can transform a space into a peaceful and harmonious retreat.



5) What are you most excited about in your new role here?

I'm excited to step beyond the boundaries of school and dive into new learning experiences in the interior and architecture industry. I truly enjoy collaborating with talented and experienced teams, as it allows me to contribute to creating spaces that not only inspire but also enhance people's lives.

INTERIOR .

Batik Reimagined- Modern & Cultural Twist in Interior Design

Batik is a traditional textile art form that transforms plain fabric into a canvas of intricate patterns and vibrant colors. Using a unique wax-resist dyeing technique, artisans create stunning designs that often reflect cultural stories, natural motifs, and symbolic meanings.

While batik is most famously associated with Indonesia, where it's celebrated as a national treasure, its influence extends across Malaysia, India, Sri Lanka, and parts of Africa, each region adding its own unique flair to this ancient craft.

For centuries, batik has been cherished as a cultural symbol, adorning clothing, ceremonial attire, and everyday wear. But in recent years, this beautiful art form has stepped beyond the realm of fashion and into the world of interior design and furniture. Designers and homeowners alike are embracing batik as a way to infuse spaces with warmth, character, and a touch of heritage...

INDONESIAN
Batik
SEAMLESS PATTERN



Hand Drawn Batik

It involves drawing designs on fabric with hot wax using a canting (a metal tool). Artists then use brushes to paint dyes within the wax outlines, creating shaded, multi-colored patterns.



Block Printed Batik

Another type of batik is the stamped batik or block-printed batik. The canting will be replaced by a copper block or sometimes a wooden stamp with an artistically patterned bottom.

From batik-printed cushions and upholstered chairs to statement wall art and elegant curtains, batik is making its mark in modern interiors. Its intricate patterns and rich colors add depth and personality to any room, whether it's a cozy living space or a chic office. Batik's versatility allows it to blend seamlessly with both traditional and contemporary decor, creating a unique fusion of old and new.

As a design element, batik brings more than just visual appeal—it carries a sense of history and craftsmanship. Each piece tells a story, making it a meaningful addition to any home. Whether it's a bold batik accent wall or a subtle batik-inspired throw pillow, this timeless art form is proving that it's not just for fabric—it's for creating spaces that feel alive, cultural, and deeply personal.

Batik is no longer confined to clothing; it's a celebration of art, culture, and design, slowly but surely finding its place in the heart of modern interiors.



Upholstery

Tribal Batik Cabinet Stencil by Royal Studio Stencil, features intricate, tribal-inspired patterns that mimic the look of traditional batik fabric.

Dining Table Set by Batik Indonesia, paired with comfortable chairs adorned with complementary batik motifs, this set transforms your dining space into a sophisticated haven with traditional and modern fusion.

Batik Armchair Orter Collection- Smoke & Atelier is a stunning piece of furniture that combines traditional batik-inspired patterns with modern design. This armchair is part of a collection that celebrates craftsmanship, cultural heritage, and contemporary aesthetics. Here's a closer look at what makes this armchair special:

SARAY- PHOENICIA series-Ottoman

SARAY- PHOENICIA series- Pendant Lamp Made of PHOENICIA BATIK linen fabric with shades of deep blue and dark red emerging from the beautiful ornamental pattern, the lamp is decorated with red cotton fringes.





Interior Design

Explore the batik elements appear in Tjaps at Alila Villas Uluwatu by WOHA Architects. Tjaps are exquisite handmade copper stamps meticulously crafted by cutting, shaping, and soldering them into intricate, traditional batik patterns and designs. These stamps are thoughtfully arranged in collections and used consecutively, dipped into hot wax, and carefully pressed onto fabric. Tjaps play a vital role in creating Batik Tambal (patchwork batik), a cherished Indonesian art form. Each piece is individually handcrafted, making it one-of-a-kind, and over time, this art has evolved to incorporate modern influences while preserving its cultural roots.



Potato Head (Hong Kong Eatery) by Sou Fujimoto



Batik Interior Design By Amateur

RAYA READY .

Modern Raya Celebration

Hari Raya, also known as Eid al-Fitr, is a vibrant and joyous celebration that marks the end of Ramadan, the sacred month of fasting for Muslims around the world. Traditionally, Raya has been a time for heartfelt family reunions, cherished cultural rituals, and deep spiritual reflection.

However, in the age of rapid technological advancements and evolving lifestyles, modern Raya celebrations have seamlessly woven new elements into the festive tapestry while preserving the cherished essence of the festival.

In this article, let's see how Raya celebrations have evolved with the times, incorporating new elements while preserving traditional practices. Here are some features of contemporary Raya celebrations:



Digital Greetings & E-duit Raya

Instead of traditional greeting cards and physical Duit Raya, people now use social media and messaging apps to send Hari Raya wishes and Duit Raya, making it easier to connect with loved ones across distances



E-Gatherings

With advancements in technology, families can now hold virtual gatherings and live streams, allowing those who are far away to join in the celebrations!

Fashion Forward

Traditional attire like Baju Melayu and Baju Kurung are now seen with modern twists. Designers blend traditional patterns with contemporary styles, making Raya fashion a unique blend of old and new.

Innovative Cuisine & Fusion

While traditional dishes remain a staple, modern Raya celebrations see chefs and home cooks experimenting with new recipes and fusion dishes, offering a delightful twist to the classic flavors.

Family Activities

Families celebrating Raya nowadays are fun and meaningful activities to create lasting memories- Shooting Videos to showcase their Raya preparations, outfits, and festive moments. Or, take advantage of the raya holidays to travel and explore new destinations with family.



FURNI .



Give Your Living Room A Raya Glow Up with IKEA

This Raya season, let your living room radiate warmth, tradition, and modern elegance with IKEA's Raya-inspired furniture. From sleek, versatile pieces to timeless designs, IKEA helps you create a living room that's perfect for welcoming loved ones and celebrating in style. Celebrate the joy of togetherness with a living room that shines as brightly as the season!



GOKVÄLLÅ \$39.90
Curtain, blue, 145x250 cm

Add a festive flair to your windows with these stylish curtains featuring a geometric design. They let natural light filter through while maintaining privacy, crafted from a blend of cotton and jute. Perfectly complementing the GOKVÄLLÅ collection, they bring a cohesive and elegant touch to your space.



GOKVÄLLÅ \$8.50
Table-runner, beige, 35x130 cm

A table runner adds a special touch to your dining setup, making it feel warm and welcoming for both everyday meals and festive gatherings. This one features handcrafted tassels and is made from a cotton-polyester blend in soft beige tones, beautifully complementing your porcelain dishes.

GOKVÄLLÅ \$7.50
Cushion cover, multicolour, 50x50 cm

Like a lovely piece of jewellery, this colourful cushion cover catches the eye and gives your sofa an elegant touch. Made of soft cotton and goes nicely with the other textiles in the GOKVÄLLÅ collection.



GOKVÄLLÅ \$26.90
Floor cushion, blue/multicolour, 45x45x10 cm

Floor cushions are perfect as extra seating. This one is octagonal, featuring a mosaic-patterned yellow top with blue sides and piping. Made of soft cotton, it matches the other textiles in the GOKVÄLLÅ collection.

GOKVÄLLÅ \$19.90
Rug, blue, 80x150 cm

This soft rug with a printed geometric pattern in blue tones is comfortable to walk on and goes just as nicely in the hallway as by the bed. Easy to match with other textiles in the GOKVÄLLÅ collection.





GOKVÄLLÅ \$7
Tealight holder, gold-colour, 8x8x9 cm

As soon as you light a tealight in this octagonal holder, a soft glow spreads through the punched floral pattern, making the home feel ready for all the festivities. Part of the GOKVÄLLÅ collection.

GOKVÄLLÅ \$16.90
Vase, yellow/glass, 14x14x14 cm

This yellow mouth-blown glass vase with an octagonal base is just as decorative with or without flowers. Part of the GOKVÄLLÅ collection where you will also find textiles and decorations that match.



GOKVÄLLÅ \$14.90
Serving tray, gold-colour, 19x19x2 cm

That gold-colored octagonal tray with an engraved floral pattern sounds like a stunning and practical addition to your entertaining essentials! Its elegant design not only adds a touch of sophistication to your table setup but also makes it functional for serving and clearing during parties or gatherings.



HAPPENINGS .

The Raya & Lifestyle Fest

Celebrate the festive spirit of Raya with a vibrant mix of cultural highlights, lifestyle showcases, and unforgettable experiences. Whether you're here to embrace tradition, explore new trends, or simply soak in the joyous atmosphere, this column is your one-stop destination for all fun and celebration.



PASAR SELOKA RAYA

- . The Five, Damansara Heights
- . 24 February- 25 March 2025 | 12 PM- 10 PM

From picnics to sunset watching, the team has even done events abroad, bringing local creatives with them to “showcase the best of Malaysia.

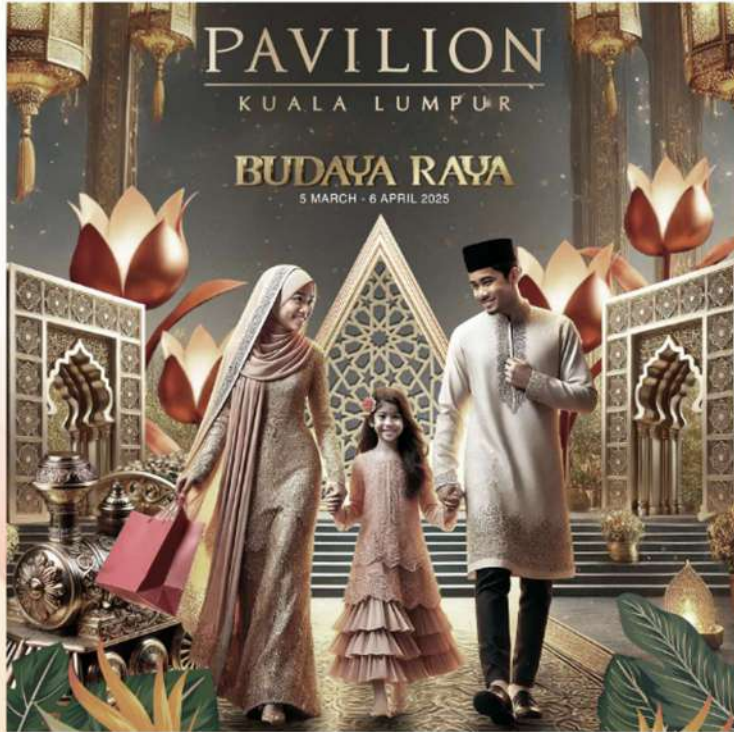
This year, they have four events in the pipeline under the “Seloka Raya” name, and this one is set to be the longest.

RIUH RAYA KITA

- . Raintree Plaza, The Exchange TRX
- . 19 – 23 March 2025 | 3 PM – 2 AM

A pop-up Ramadan Bazaar in celebration of Raya (Eid al-Fitr) will take place from 19-23 March 2025 at Raintree Plaza, an open-air event space just outside the Tun Razak Exchange (TRX) in downtown KL.

With over 80 retail booths offering everything from clothing and home decor to cookies, plus 20 F&B vendors serving up local food and snacks, this event has everything you need for your Raya festive shopping. Visitors can also enjoy a lineup of 30 live performances, ranging from cultural showcases to contemporary music, as well as 6 engaging craft workshops for all ages.



BUDAYA RAYA, PAVILLION KUALA LUMPUR

- . Pavilion Kuala Lumpur
- . 5 March 2025- 6 April 2025

Experience thrilling tech exhibits, summer fashion shows, and a world of endless delights at Pavilion Kuala Lumpur — the ultimate destination for unforgettable moments and vibrant shopping adventures.

GLAMOUR KAMPUNG BUFFET, FOUR SEASONS HOTEL KL

- . Four Seasons Hotel, Kuala Lumpur
- . 1- 30 March 2025 | 3 PM – 2 AM

Welcome to a culinary celebration rooted in the heart of Malaysia. As the moon rises, a captivating food bazaar springs up at Curate, complete with live music.

Guests can explore an array of global flavours – from the beloved classics and local favourites to delicacies from Japan, China, India and the West. At the live counters, Four Seasons chefs bring signature specialities to life, including Kambing Golek Utara (Smoked Roasted Whole Lamb) and Nasi Ulam with black truffle and minced wagyu beef. On the sweet side, savour delights such as the Pistachio and Rose Om Ali, Rose Bandung and Pistachio Panna Cotta, and Cendol Rice Pudding.

ARCHITECTURE .

Castle Exhibition Space, France / Amelia Tavela

Source: Arch Daily



Hospitality Architecture, Museums & Exhibit, Adaptive Reuse

Architect: Amelia Tavela

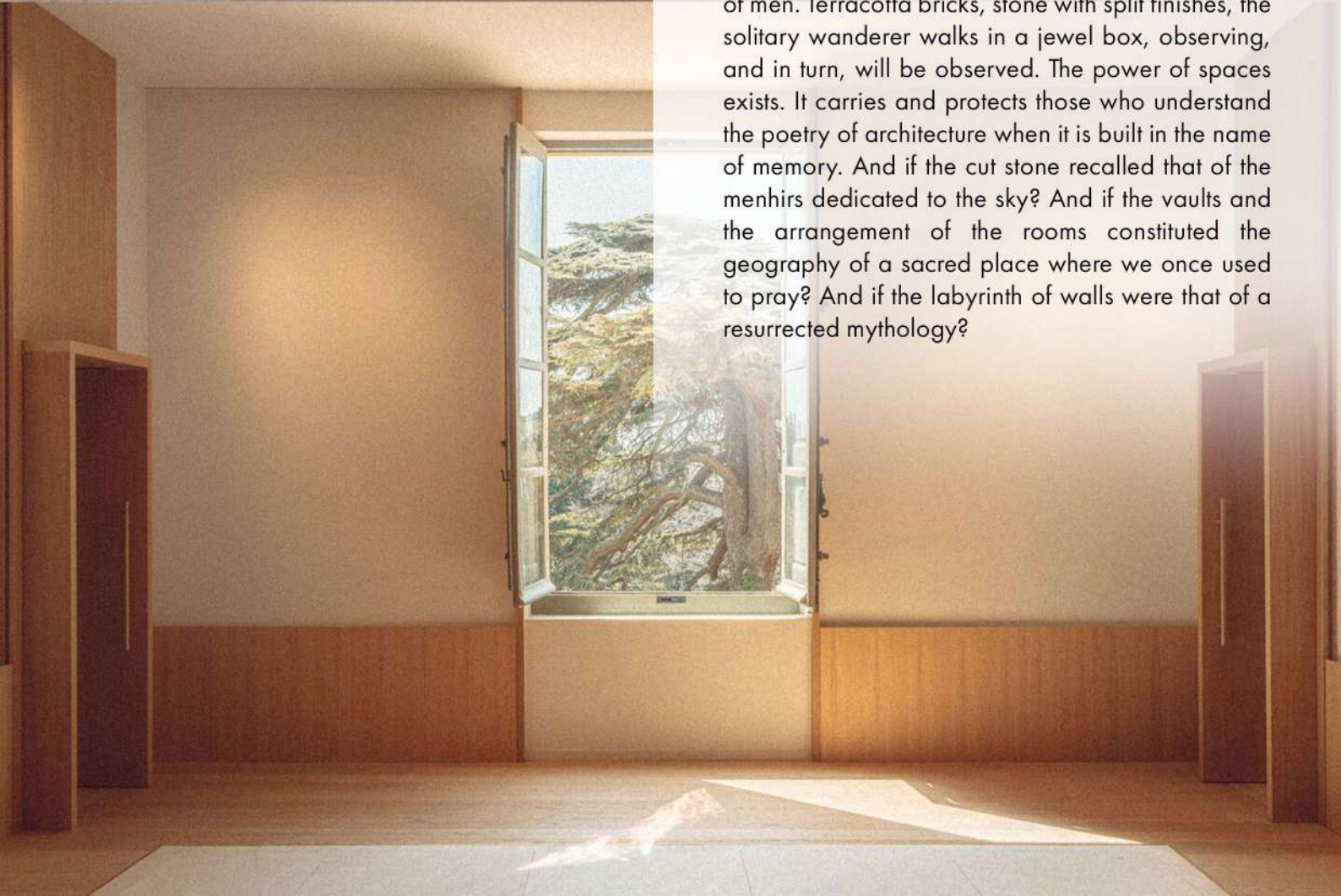
Area: 1700 m

Year: 2023

Corsican architect Amelia Tavella has recently brought a hidden, dormant castle in her southern homeland, beautifully situated within a Provencal vineyard. In the castle's expansive 1,600m² central structure, she has designed a distinctive and enigmatic exhibition space, flanked by two wings housing a dozen exclusive suites.



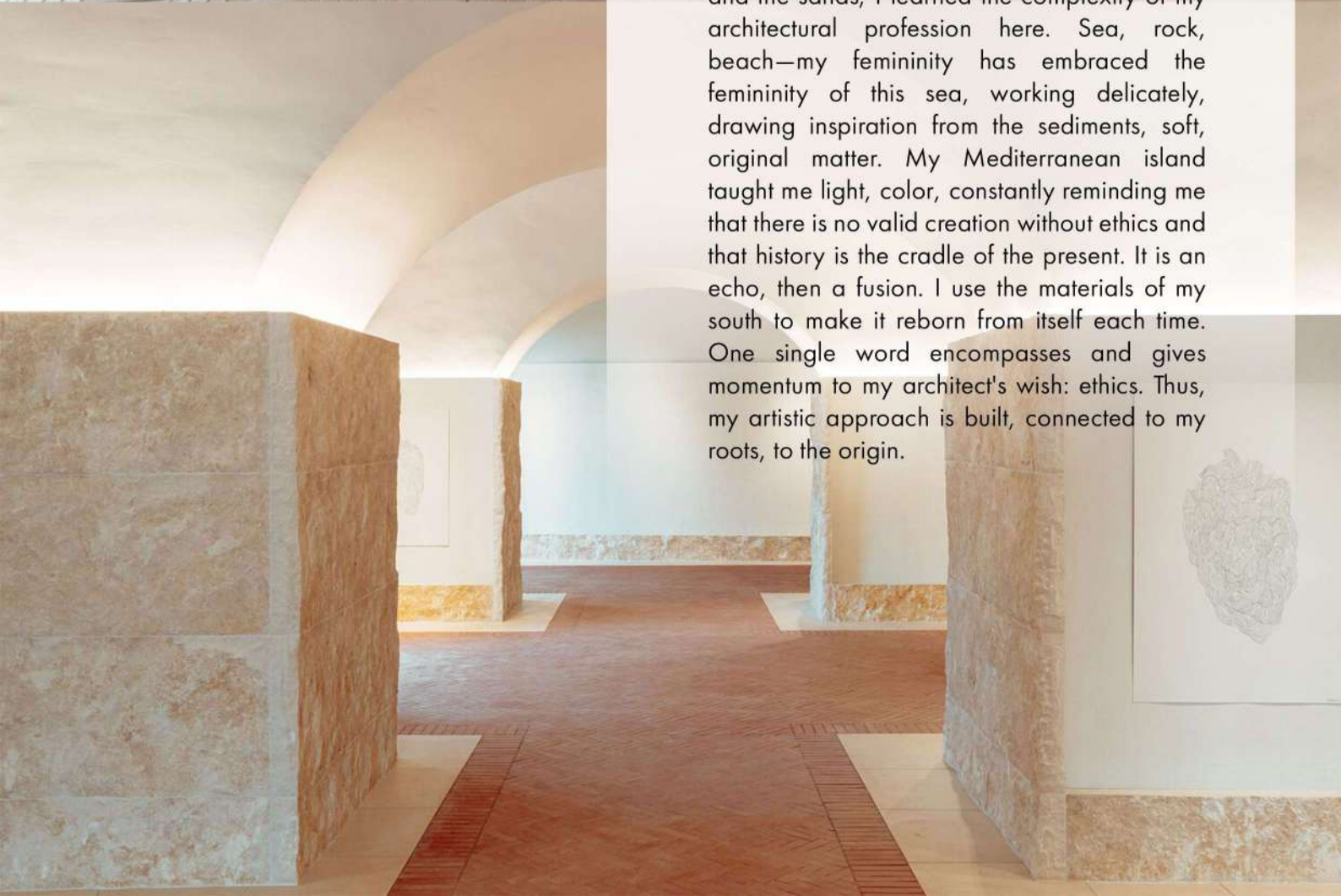
The museum space, like the suites, steeped in Amelia Tavella's Mediterranean spirit, is «a path under the alcoves. Here, mineral, organic matter pulses. Cut, red, veined, this material resembles flesh. It is naked, chiseled, hollowed out, raw. This skin is offered to the hand that caresses it. It could be alive and beating before our eyes. It could move and embrace us. Walls and floors do not clash; they gaze at each other, extend, and speak of the work of men. Terracotta bricks, stone with split finishes, the solitary wanderer walks in a jewel box, observing, and in turn, will be observed. The power of spaces exists. It carries and protects those who understand the poetry of architecture when it is built in the name of memory. And if the cut stone recalled that of the menhirs dedicated to the sky? And if the vaults and the arrangement of the rooms constituted the geography of a sacred place where we once used to pray? And if the labyrinth of walls were that of a resurrected mythology?





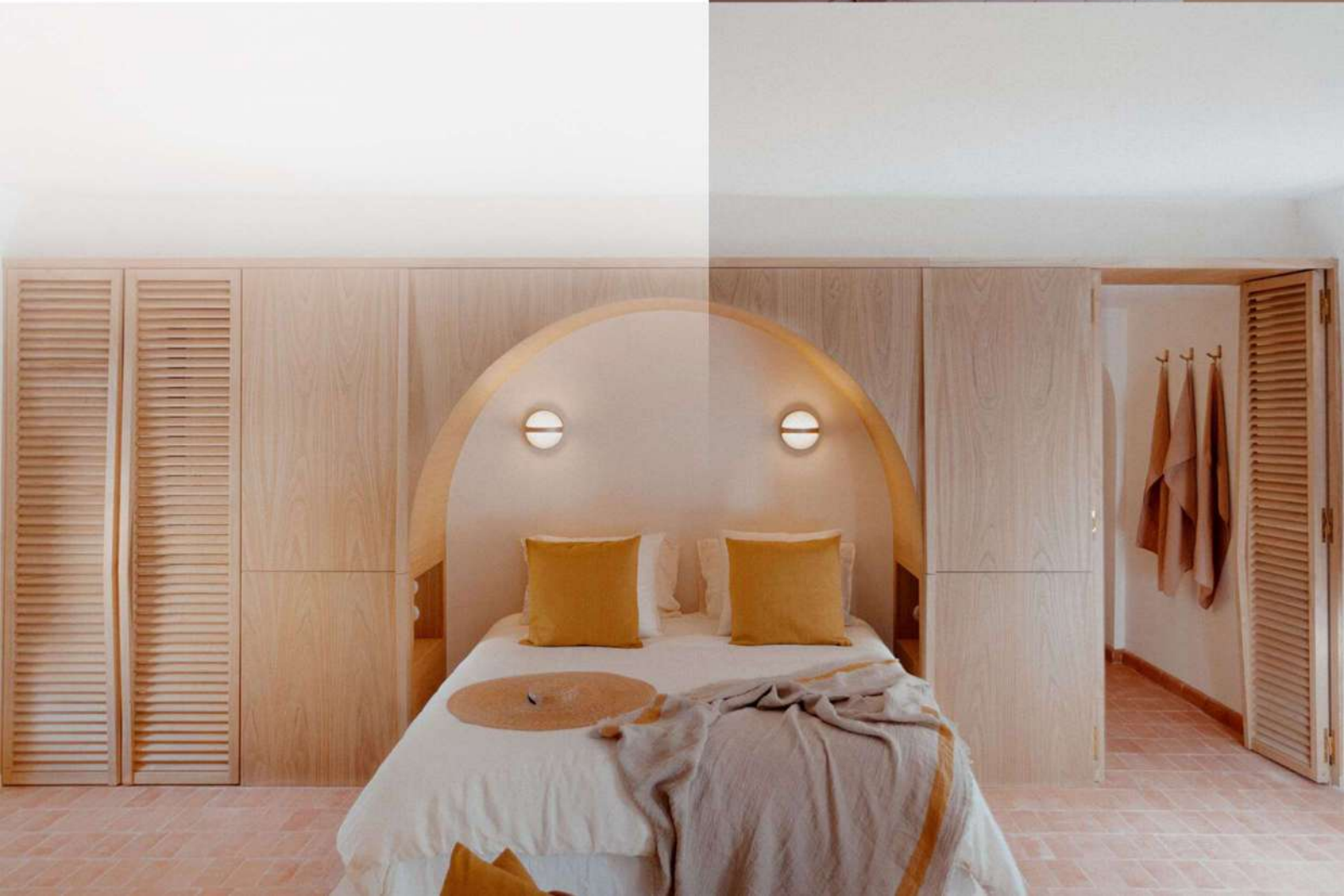
This space embodies Amelia Tavella's architectural vision, deeply rooted in the elegance of noble, natural materials and a profound respect for history. Tavella identifies as a symbolic archaeologist, delving into the remnants, signs, and imprints of the past to craft her designs with unwavering authenticity. Nature is always an integral part of her work, serving both as a decorative element and a testament to the site's origins. It stands in harmony with the buildings it surrounds, honoring and being honored in return. Tavella's approach is one of gentleness and poetic expression, always mindful that architecture exists primarily for the people who inhabit it. Here, her work transcends solitary creation; it is a collective act, intricately woven into the timeless fabric of its surroundings.

When I build, I do not undo. There is no betrayal. I proceed by inclusion. Nature invades my projects. It is neither an obstacle nor a constraint; it is my guest whom I celebrate. The Mediterranean is my matrix. I come from there, from this unique place. A child of the maquis and the sands, I learned the complexity of my architectural profession here. Sea, rock, beach—my femininity has embraced the femininity of this sea, working delicately, drawing inspiration from the sediments, soft, original matter. My Mediterranean island taught me light, color, constantly reminding me that there is no valid creation without ethics and that history is the cradle of the present. It is an echo, then a fusion. I use the materials of my south to make it reborn from itself each time. One single word encompasses and gives momentum to my architect's wish: ethics. Thus, my artistic approach is built, connected to my roots, to the origin.



A room as romantic as this was needed to welcome, for an evening, the drawings of writer Nina Bouraoui, *Variations*, her vast, deconstructed hearts, veined, composed of fine, intertwined lines reflecting the obsessions, repetitions, defeats, and victories of romantic feelings.

The castle was designed not only as a venue for artistic and cultural exhibitions but also as a space for exclusive accommodation. The addition of the rooms in the two wings of the castle allows guests to stay and experience the unique ambiance of the historical site. This combination of exhibition space and luxurious suites makes the castle both a cultural destination and a serene retreat, seamlessly blending functionality with beauty.



INSIGNIA INTERIOR

Interior Design
Architectural Design
Design & Build
Fit Out Specialist
Project Management

WEBSITE

www.insigniainterior.com.my

FACEBOOK

Insignia Interior

INSTAGRAM

insignia_interior

LINKEDIN

Insignia Interior Sdn Bhd

ADDRESS

75 Jalan Anggerik Emas 1
Taman Anggerik Emas 1
81300 Johor Bahru
Malaysia

CONTACT

016 733 0710

